

Exhibit E: RiverGrant Interpretive Signage**RiverGrant**

CCC received a RiverHealth Stewardship Grant for the stormwater facilities located on the Harmony Community Campus aimed at reducing the amount of runoff while demonstrating treatment and retention through interpretive signage. One of the requirements is to provide an interpretive signage on the site to explain the stormwater features. Signs are to be 18" x 24" and shall be mounted on a steel pedestal. Selected **Vendor will be provided with all graphic vector files.**

Proposed Sign Pedestal Manufacturer:

Enviosigns (or equal substitution)

- a. Model: low-profile pedestal with frameless panels
- b. Color: Powder coated black
- c. In-ground installation
- d. Must accommodate an 18" x 24" sign

<http://store.enviosigns.com/low-profile-pedestals-with-frameless-panels>

RAIN GARDEN AT WORK

A rain garden is a planted, bowl-shaped area designed to collect and absorb runoff and filter out pollutants. It is designed to temporarily hold and treat the runoff flowing from impervious surfaces such as roofs and pavement that prohibit water from soaking into the ground.

WHAT'S IN THE RUNOFF?

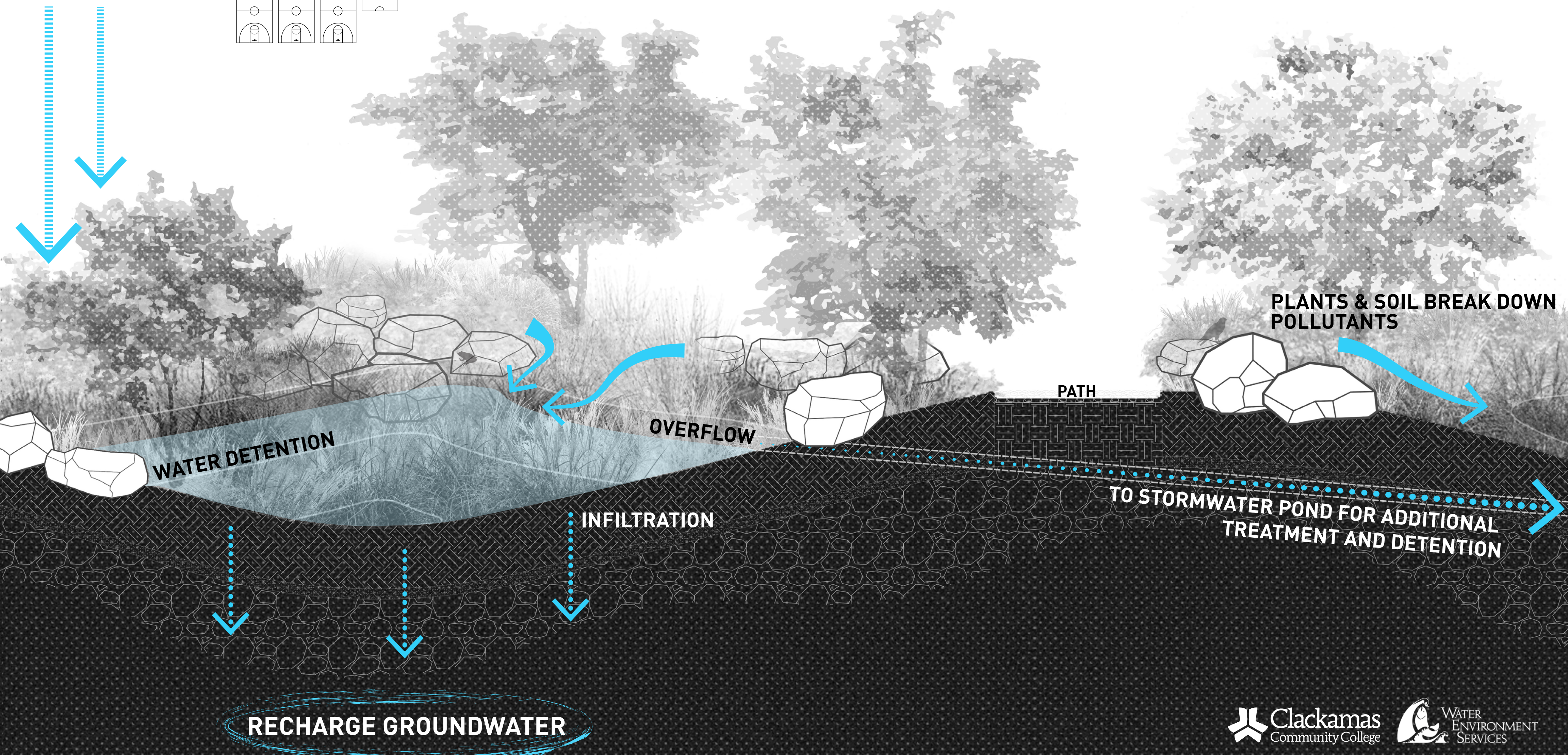
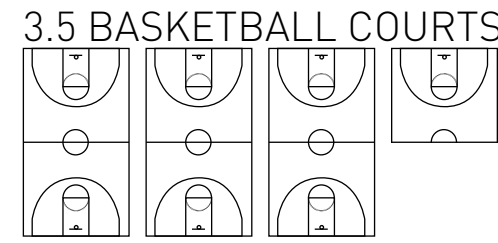
Anything on the ground can be picked up when it rains and washed into local streams, including bacteria, oil, grease, metals, fertilizers, sediment, herbicides and other pollutants.

IF IT'S ON THE GROUND, IT'S IN THE WATER

Our roads, homes and buildings contribute huge volumes of polluted runoff to area streams and can affect water quality and harm organisms that live in those streams. Just as each of us may contribute to pollution, each of us can be part of the solution.

To learn more, go to clackamas.us/wes

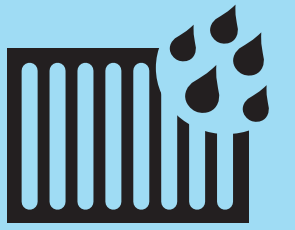
COLLECTS 18,000 sf
ROOF RUNOFF



HOW YOU CAN HELP



REDUCE THE USE
OF FERTILIZER
AND PESTICIDE



ONLY STORMWATER
IN STORM DRAINS



SCOOP THE POOP!



USE CAR WASHES

SWALE AT WORK

A swale is a long, planted, open channel that carries, slows and absorbs stormwater and filters out pollutants. The design of swales seeks to reduce stormwater volume through infiltration, improve water quality through infiltration and vegetative filtering, and reduce runoff velocity by increasing flow path lengths and the texture of the channel.

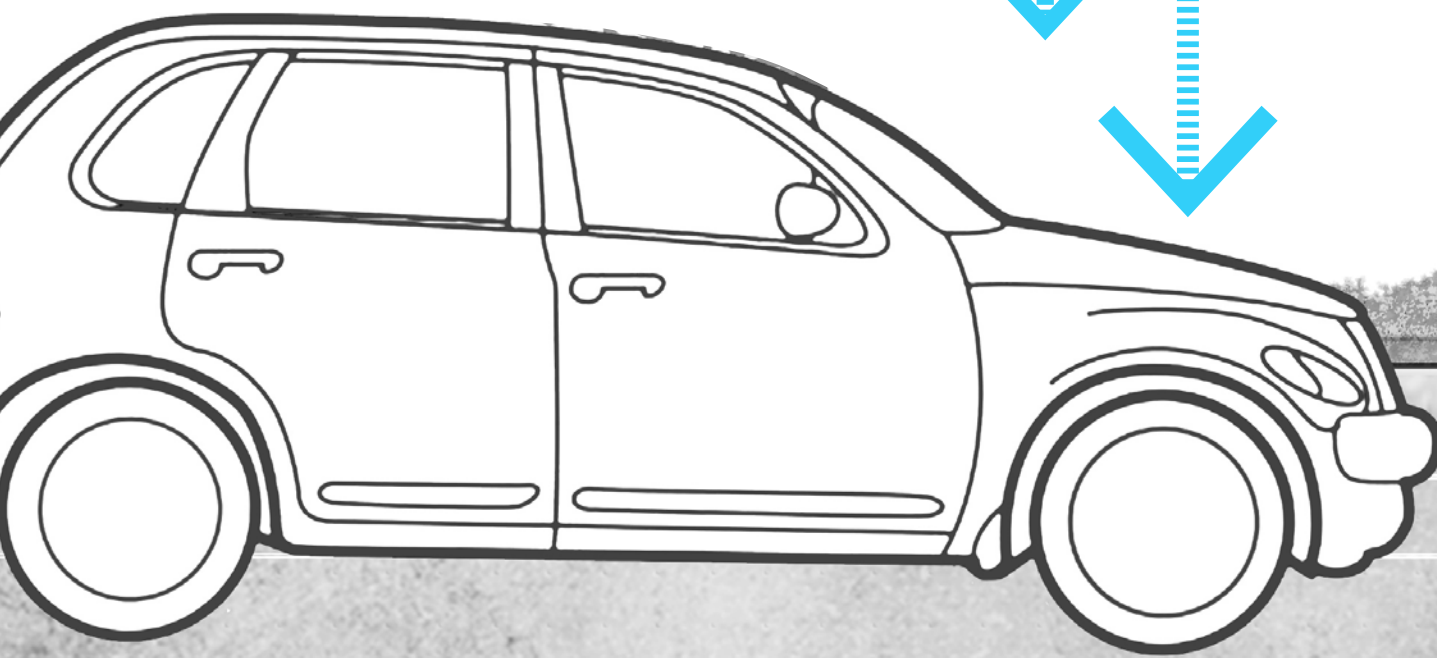
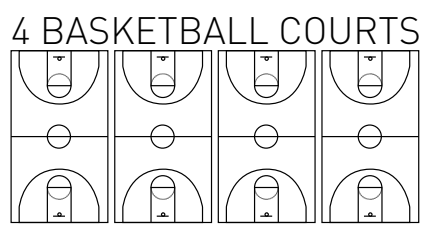
WHAT'S IN THE RUNOFF?

Anything on the ground can be picked up when it rains and washed into local streams, including bacteria, oil, grease, metals, fertilizers, sediment, herbicides and other pollutants.

IF IT'S ON THE GROUND, IT'S IN THE WATER

Our roads, homes and buildings contribute huge volumes of polluted runoff to area streams and can affect water quality and harm organisms that live in those streams. Just as each of us may contribute to pollution, each of us can be part of the solution. *To learn more, go to clackamas.us/wes*

COLLECTS 19,800 sf
PARKING LOT
RUNOFF



CONTAMINATED RUNOFF:

PLANTS AND SOIL
FILTER POLLUTANTS

OVERFLOW
TO MT. SCOTT CREEK

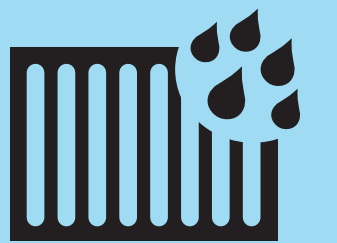
WATER FLOWS THROUGH
& IS SLOWLY ABSORBED

RECHARGE GROUNDWATER

HOW YOU CAN HELP



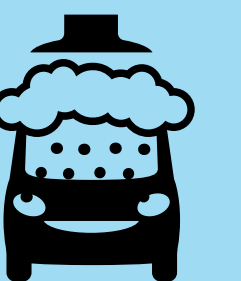
REDUCE THE USE
OF FERTILIZER
AND PESTICIDE



ONLY STORMWATER
IN STORM DRAINS



SCOOP THE POOP!



USE CAR WASHES