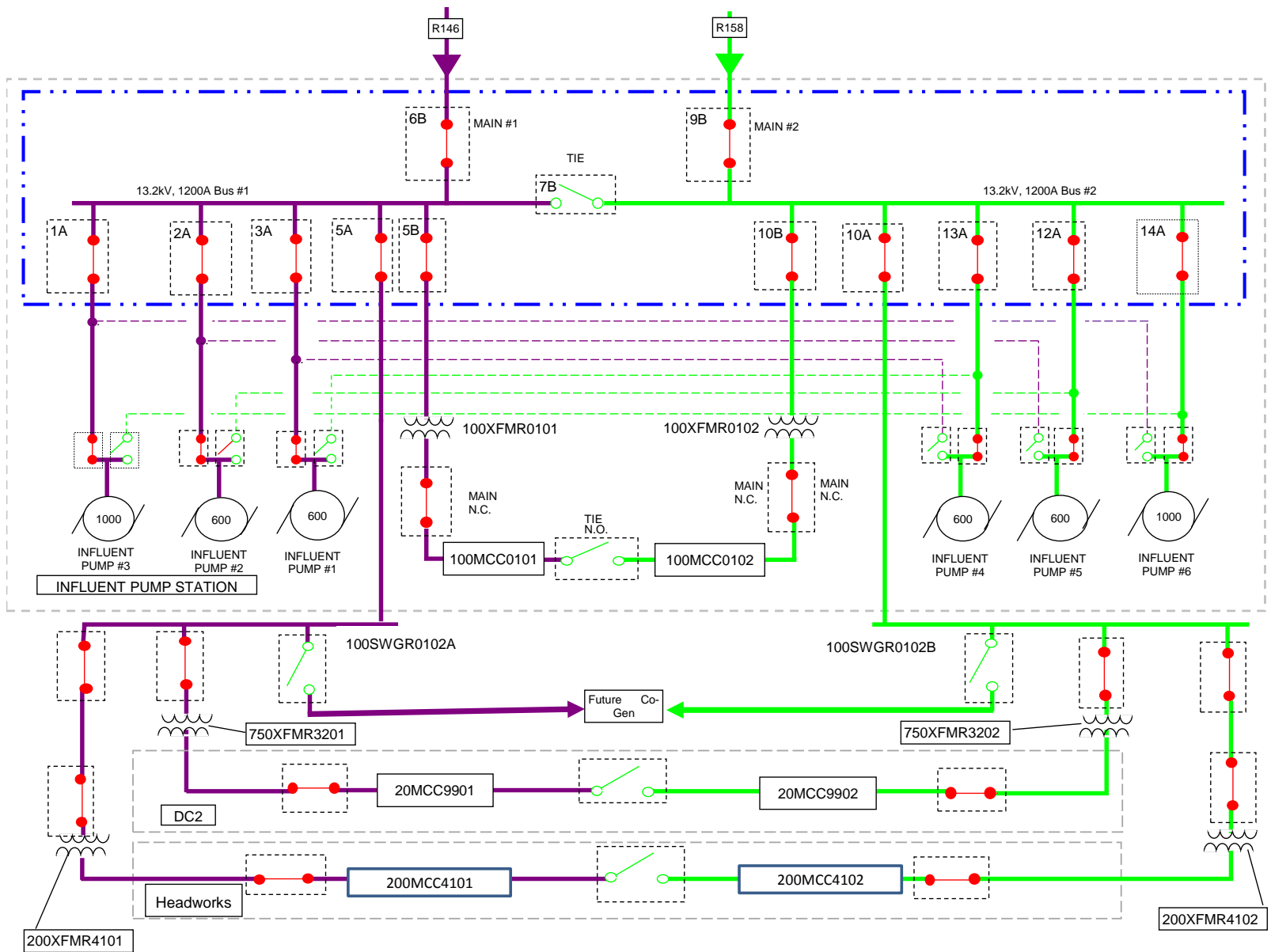
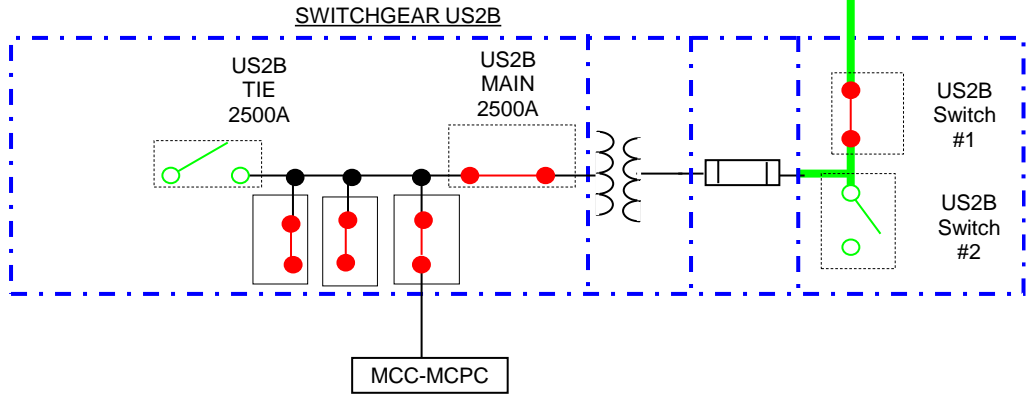


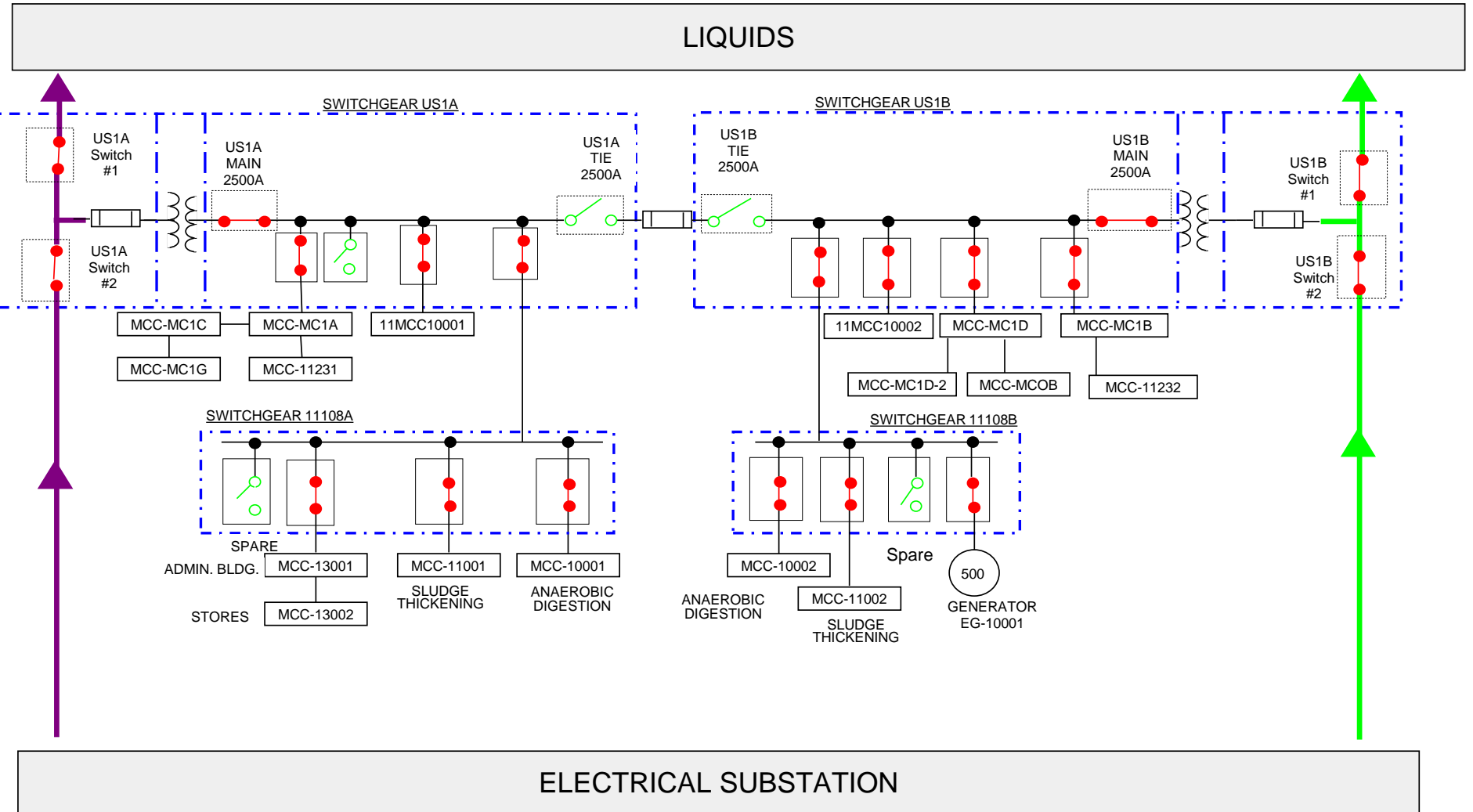
Print



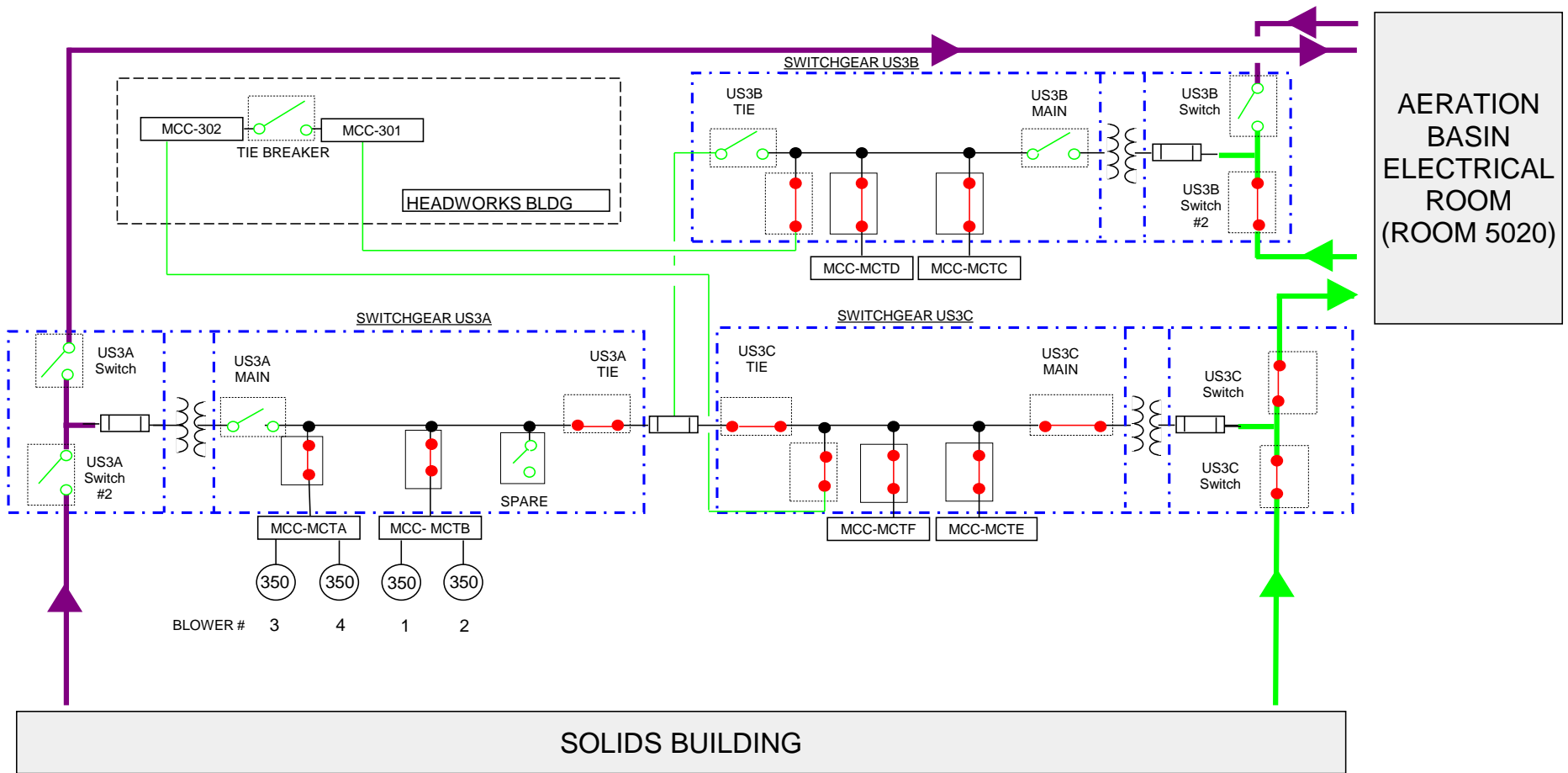
E
L
E
C
T
R
I
C
A
L

S
U
B
S
T
A
T
I
O
N

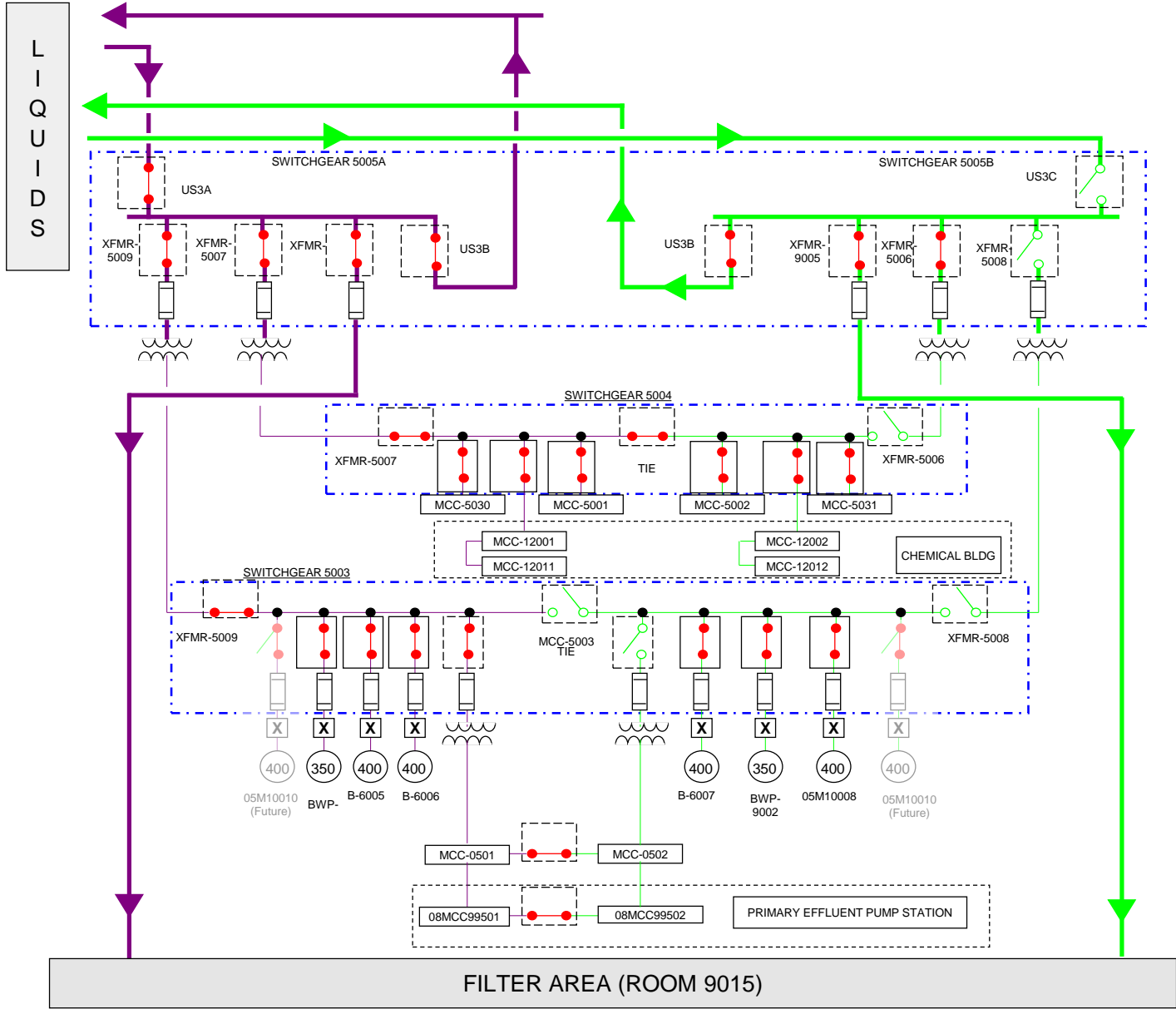




Print

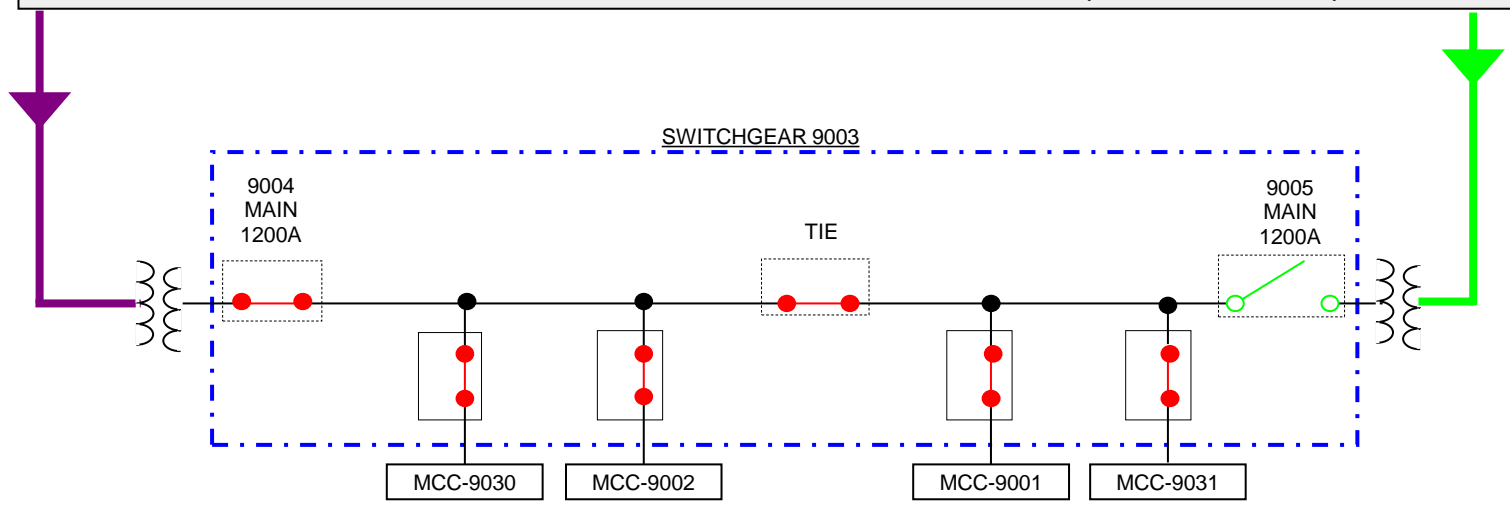


Print



- Zoom Out
- Zoom In
- Print
- Standard Configuration

AERATION BASIN ELECTRICAL ROOM (ROOM 5020)



200MCC4101					
1B			2A		3B
1E			2D		3D
1G1	1G2		2L		3L
1I1	1I2				
1L					

200MCC4101	
1B	Power Quality Meter
1E	Odor Control Fan #1
1G1	Bar Screen #1 - 200SCR0501
1G2	Bar Screen #2 - 200SCR0502
1I1	Washer/Compacter #1 - 200SCR0701
1I2	Washer/Compacter #1 Isolation Gate - 200G0701
1L	ATS Feeder
2A	Blank
2D	Surge Protection Device
2L	200MCC4101 - Main Switch
3B	Blank
3D	Blank
3L	200MCC4101 / 200MCC4102 - Tie Switch

[Return to Drawing](#)

200MCC4102				
1A		2B		3B
1D		2E		3D
1L		2G1	2G2	3F
		2I1	2I2	3H
		2L		3J
				3L

200MCC4102	
1A	Blank
1D	Surge Protection Device
1L	200MCC4102 - Main Switch
2B	Power Quality Meter
2E	Blank
2G1	Bar Screen #3 - 200SCR0503
2G2	Bar Screen #4 - 200SCR0504
2I1	Washer/Compactor #2 - 200SCR0702
2I2	Washer/Compactor #2 Isolation Gate - 200G0702
2L	ATS Feeder
3B	Blank
3D	Blank
3F	Blank
3H	Blank
3J	Blank
3L	Blank

Location: Headworks Bar Screen Electrical Room

1E	2F	3E	4B	5M	6C	7B	8B
			4D		6D	7M	8M
			4F		6F		
4H	6J						
1M	2M	3M	4K		6M	7M	8M
			4M				

9M	9B	10C	11B	12M	13E	14F	15E
	10M	10F	11D				
		10H	11F				
		10K	11H				
		11M	11K				

716MCC4401	
1E	Blank
1M	716RF4501 - Radiator Fan 1
2F	716EF8001 - Engine Room Exhaust Fan 1
2M	716EF8002 - Engine Room Exhaust Fan 2
3E	716P6601 - Heat Recovery Recirculation Pump 1
3M	716SF8001 - Engine Room Supply Fan 1
4B	716P4501 - High Temperature Recirculation Pump 1
4D	716P4502 - Low Temperature Recirculation Pump 1
4F	716P4505 - Fresh Oil Transfer Pump 1
4H	716P4507 - Waste Oil Transfer Pump
4K	716P6604 - HVAC Recirculation Pump
4M	716ENG4501-P - Engine Jacket Water Pump 1
5M	716AHF4401 - Active Harmonic Filter
6C	SPD - Surge Protection Device
6D	Blank
6F	716ENG4501-HTR - Engine Jacket Water Heater 1
6J	717VCP6901 - Gas Cleaning System
6M	716ATS4401 - ATS
7B	716DPM4401 - Power Meter
7M	716NCB4401 - MAIN SWITCH
8B	Blank
8M	7164401/4402 TIE

716MCC4402	
9B	716DPM4402 - Power Meter
9M	716DPM4402 - MAIN
10C	SPD
10F	716ATS4401 - ATS
10H	716P4503 - High Temp Recirculation Pump 2
10K	716PA4504 - Low Temp Recirculation Pump 2
10M	716PA506 - Fresh Oil Transfer Pump 2
11B	716PA508 - High Temperature Recirculation Pump 3 (Future)
11D	716P6603 - Heat Recovery Recirculation Pump 3 (Future)
11F	716P4510 - Fresh Oil Transfer Pump 3 (Future)
11H	716ENG4502-P Engine Jacket Water Pump 2
11K	716P4509 - Low Temperature Recirculation Pump 3 (Future)
11M	716ENG4502-HTR - Engine Jacket Water Heater 2
12M	716AHF4402 - Active Harmonic Filter
13E	716P6602 - Heat Recovery Recirculation Pump 2
13M	716RF4502 Radiator Fan 2
14F	716EDF8003 - Engine Room Exhaust Fan 3
14M	716EDF8004 - Engine Room Exhaust Fan 4
15E	716EDF8006 - Engine Room Exhaust Fan 6 (Future)
15M	716SF8002 Engine Room Supply Fan 2

It's my opinion that the tags on the bolded buckets are incorrect

715MCC4401				715MCC4402			
1G	2B	3B	4B	5B	6B	7E	8F
	2D	3E	4D	5E	6D		
	2F		4F	5F	6F		
1M	2H	3M	4M	5M	6H	7L	8H
	2K				6K		8K
	2M				6M		8M
						7M	

715MCC4401		715MCC4402	
1G	715P6402 - FOG Waste Feed Pump 2	5B	715DPM4402 - Power Meter
1M	715P6601 - Secondary Heat Loop Recirculation Pump 1	5E	SPD
2B	Blank	5F	Blank
2D	Manuals and Heaters	5M	715INCB4402 - MAIN
2F		6B	715EF4101 - Odor Control Fan
2H	715MX6401 - FOG Waste Mixer 1	6D	715P6604 - FOG Hot Water Recirculation Pump 2
2K	715P6401 - FOG Waste Transfer Pump 1	6F	715MX6402 - FOG Waste Mixer 2
2M	715ATS4401 - FEEDER	6H	715P6403 - FOG Waste Transfer Pump 2
3B	715DPM4401 - Power Meter	6K	715HW6401 - High Pressure Hot Water Wash
3E	SPD	6M	715ATS4401 - FEEDER
3F	Blank	7E	715EF8001 - Pump Room Exhaust Fan
3M	715INCB4401 - MAIN	7L	715P6404 - FOG Waste Feed Pump 2
4B	Blank	7M	Blank
4D	Blank	8F	715P6602 - Secondary Heat Loop Recirculation Pump 2
4F	Blank	8H	715P6605 - FOG HW Recirculation Pump 3 (Future)
4M	7154401/4402 - TIE	8K	715MX6403 - FOG Waste Mixer 3 (Future)
		8M	715P6405 - FOG Waste Transfer Pump 3 (Future)

301 WESTINGHOUSE SERIES 2100	480V 3PH 3W 60HZ
PO 43520--1A	H. BUS 1200A
MAY 90 POC	SEC 1, 7 800A
	SEC 2 - 6 300A

Location: Headworks

Bucket NO.

1B	INCOMING LINE	
1G	MAIN	
1J	#1 GRIT CLASSIFIER GC-310	GC-310
1M	TERM BLOCK	
2B	NON POTABLE WATER PUMP NPWP-401	NPWP-401
2D	WESTINGHOUSE IQ DATA PLUS II	
2F	PISTA ROTOR CHANNEL 2 PR-302	PR-302
2K	ODOR CONTROL FAN 401 OCF-401	OCF-401
2M	ODOR CONTROL FAN 402 OCF-402	OCF-402
3B _L	MAKEUP AIR UNIT MU-301	MU-301
3B _R	SLUICE GATE UPFLOW WELL #1 SL-301	SL-301
3D _L	INLET SLIDE GATE CHANNEL #1 SG-311	SG-311
3D _R	INLET SLIDE GATE CHANNEL #2 SG-312	SG-312
3H _L	CONTROL SLIDE GATE EXCESS FLOW CHANNEL SG-341	SG-341
3H _R	SOUTH OVERHEAD GRIT ROLLUP DOOR D-301	D-301
3K	CROSS FLOW SLIDE GATE SG-303	SG-303
3M	EXHAUST FAN HEADWORKS EF-301	EF-301
4B	BLANK	
4D _L	XFMR MAIN	
4D _R	POWER PANEL MAIN	
4K	IP-301	
4M	XFMR MAIN	
5C	BAR SCREEN CHANNEL 1 S-301	S-301
5F	B-361	B-361
5H _L	NORTH OVERHEAD GRITE ROLLUP DOOR D-302	D-302
5H _R	SCREENINGS ROOM ROLLUP DOOR D-303	D-303
5M	CAPACITOR CAP-301	CAP-301
6B	GRIT PUMP CHANNEL 1 GP-301	GP-301
6D	GRIT PUMP CHANNEL 2 GP-302	GP-302
6F	GRIT PUMP CHANNEL 3 GP-303	GP-303
6H	PRIMARY SLUDGE PUMP PSP-406	PSP-406
6K _L	42" FLOW METER ISOLATION VALVE	
6K _R	SEPTAGE RECEIVING INLET VALVE	
6M	PRIMARY SLUDGE PUMP PSP-403	PSP-403
7B	PRIMARY SLUDGE PUMP #3 PRIMARY CLARIFIER PSP-408	
7D	BAR SCREEN CHANNEL #2 S-302	S-302
7M	TIE BREAKER	

[Back to the Drawing](#)

302 WESTINGHOUSE SERIES 2100
PO 43520--1A
MAY 90 POC

480V 3PH 3W 60HZ
H. BUS 1200A
SEC 1, 7 800A
SEC 2 - 6 300A

Location: Headworks

Bucket NO.

1C	SPARE
1F	B-362
1HL	PLPB
1HR	PLPA-PPA
1K	GRIT PUMP (SWING) GP-305
2B	GRIT PUMP (SWING) GP-306
2D	SPARE
2F	SPARE
2H	DEWATERING PUMP (#3 PRIMARY CLARIFIER)
2K	ODOR CONTROL FAN OCF-403
2M	ODOR CONTROL FAN OCF-404
3C	DUMPSTER SCREW CONVEYOR #1 03M33001
3F	DUMPSTER SCREW CONVEYOR #2 03M33002
3H	PRIMARY CLARIFIER NO. 4 CD-4401
3K	SPARE STARTER
3M _L	MAKEUP AIR UNIT MU-401
3M _R	SPARE
4B	BLANK
4D _L	HOIST, RAIL, HEADWORKS
4D _R	MAKEUP AIR UNIT MU-401
4F _L	INLET SLIDE GATE CHANNEL #3 SG-313
4F _R	INLET SLIDE GATE CHANNEL #4 SG-314
4H	GRIT CLASSIFIER #2 GC-320
4K	PISTA ROTOR CHANNEL #3 PR-303
4M	PISTA ROTOR CHANNEL #4 PR-304
5B _L	SPARE
5B _R	OUTLET SLIDE GATE CHANNEL #3 SG-323
5D _L	OUTLET SLIDE GATE CHANNEL #4 SG-324
5D _R	SLIDE GATE NORMAL FLOW CHANNEL SG-331
5F _L	SLIDE GATE EXCESS FLOW (SMALL) SG-342
5F _R	MONORAIL HOIST (#3 PRIMARY CLARIFIER) H-401
5H _L	SCREENING PRESS CONTROL PANEL
5H _R	SPARE
5K _L	SLIDE GATE PRIMARY INFLUENT SPLIT BOX SG-401
5K _R	CONTROL VAVLES TO SURGE BASIN (GONE)
5M _L	120P0101
5M _R	120FV0102
6A	BLANK
6C	SCREENINGS CONVEYOR
6F	BLANK

6J	BAR SCREEN CHANNEL #3 S-303
6M	BAR SCREEN CHANNEL #4 S-304
7B	NONPOTABLE WATER PUMP NPW-301
7D	WESTINGHOUSE IQ DATA PLUS II
7F	EXHAUST FAN (#3 PRIMARY CLARIFIER) EF-401
7H	PRIMARY CLARIFIER #3 DRIVE
7K	GRIT PUMP CHANNEL #4 GP-304
7M	DEWATERING PUMP (PRIMARY CLARIFIER #3) DP-402
8B	INCOMING LINE
8G	MAIN
8K	PRIMARY SLUDGE PUMP PSP-4007
8M	BLANK
9C	CROSS SCREW CONVEYOR 03M33003
9F	PRIMARY SLUDGE PUMP PSP-4004
9J	PRIMARY SLUDGE PUMP PSP-4005
9M	PRIMARY SLUDGE PUMP PSP-4006

[Back to the Drawing](#)



B-362

GP-305
GP-306

OCF-403
OCF-404
03M33001
03M33002
CD-4401

MU-401

MU-401
SG-313
SG-314
GC-320
PR-303
PR-304

SG-323
SG-324
SG-331
SG-342
H-401

SG-401

120P0101
120FV0102

S-303
S-304
NPW-301

EF-401

GP-304
DP-402

PSP-4007

03M33003
PSP-4004
PSP-4005
PSP-4006

0501

GE 8000
LINE MOTOR CONTROL


Location: AB Elec. Room (5020)

Bucket NO.

- 1M 480V XMFR MAIN BREAKER
- 2E WAS PUMP 1 - 06M41301
- 2G LOAD REACTOR FOR WAS PUMP 1 - 06M41301
- 2H BLANK
- 2K NPW BOOSTER PUMP - 06M41501
- 2M LOAD REACTOR FOR RAS PUMP 1 - 06M41201
- 3B BLANK
- 3L RAS PUMP 1 - 06M41201
- 4E TO PEPS - 08MCC99501
- 4F ATS50501
- 4G ACC INIT NO. 1 - 06ACC99804
- 4H AERATION BASIN MIXER MOTORS 1, 2, 4, 5
- 4J WELDERS - AERATION BASIN 4
- 4L AER ELEC ROOM STBY FAN - 06F99801
- 4M BLANK
- 5E **PP- 0501 POWER**
 - 1 AERATION BASIN 4, CELLS 1, 2, 3, 4, 5 RECEPTACLES
 - 2 CLARIFIER 4 RECEPTACLES
 - 3 AERATION BASIN 4, CELLS 1, 2, 3, 4, 5 LIGHTING
 - 4 CLARIFIER 4, LIGHTING
 - 5 AERATION BASIN 4, CELL 7 RECEPTACLES
 - 6 08AIT0101 D.O. PROBE PROBE AIR BLAST COMPRESSOR
 - 7 AERATION BASIN 4, CELL 7 LIGHTS
 - 8 08AIT0102 D.O. PROBE PROBE AIR BLAST COMPRESSOR
 - 9 MLRP FLUSHING WATER HEAT TRACE
 - 10 08AIT0103 D.O. PROBE PROBE AIR BLAST COMPRESSOR
 - 11 AER STBY INLET DAMPER VIA MCC-0501/0502
 - 12 PHOTO CELL
 - 13 TRANSFORMER 0501 FANS
 - 14 TRANSFORMER 0502 FANS
 - 15 SEC CLAR 1 RAS HYPO PUMP 05P93301
 - 16 SPARE
 - 17 SEC CLAR 2 RAS HYPO PUMP 05P93302
 - 18 SPARE
 - 19 SEC CLAR 3 SCUM PIT HYPO PUMP 06P93301
 - 20 SPARE
 - 21 SEC CLAR 3 RAS HYPO PUMP 06P93302
 - 22 SPARE
 - 23 SEC CLAR 4 SCUM PIT HYPO PUMP 06P93303
 - 24 SPARE
 - 25 SEC CLAR 4 RAS HYPO PUMP 06P93304
 - 26 SPARE
 - 27 SPARE
 - 28 SPARE

	29 SPARE
	30 SPARE
	31 SPARE
	32 SPARE
	33 SPARE
	34 SPARE
	35 SPARE
	36 SPARE
5E	PP- 0501 POWER
5G	BLANK
5H	BLANK
5M	SPARE STARTER
6L	BLANK

[Back to the Drawing](#)



06M41301
06M41301

06M41501
06M41201

06M41201

ATS50501
06ACC99804

06F99801

0502

GE 8000
LINE MOTOR CONTROL

Location: AB Elec. Room (5020)

Bucket NO.

1M 480V XMFR TIE BREAKER
2C SPARE STARTER
2D WELDERS TUNNEL
2E SPARE

ATS50502 - IP-0502

- 1 SPARE
- 2 SPARE
- 3 SEC CLAR 4 WAS MAG METER
- 4 BLOWER 8 LOCAL CONTROL PANEL
- 5 SEC CLAR 4 RAS MAG METER
- 6 AB4 CELLS 1, 2, 3 AIR FLOW XMTRS
- 7 AB3 CELL 5, 6 D.O. XMTR
- 8 AB4 CELLS 4, 5, 6, 7A, 7B1, 7B2 AIR FLOW XMTRS
- 9 AB4 CELL 7A, 7B, 7C, 7D D.O. XMTR
- 10 AB4 CELLS 7C1, 7C2, 7D, 7E AIR FLOW XMTRS
- 11 AB4 CELL 7E D.O. XMTR
- 12 AB 4 AIR FLOW XMTR
- 13 SEC CLAR 4 SCUM PIT LEVEL
- 14 REMOTE PLC I/O PANEL 06LCP00403
- 15 SEC CLAR 3 SCUM PIT LEVEL
- 16 TERTIARY AIR FLOW CONTROL VALVE - 410FIT1601
- 17 SPARE
- 18 SPARE
- 19 SPARE
- 20 SPARE
- 21 SPARE
- 22 SPARE
- 23 SPARE
- 24 SPARE
- 25 SPARE
- 26 SPARE
- 27 SPARE
- 28 SPARE
- 29 SPARE
- 30 SPARE
- 31 SPARE
- 32 SPARE
- 33 SPARE
- 34 SPARE
- 35 SPARE
- 36 SPARE

2F **ATS50502 - IP-0502**
2M ATS50501
3E TO PEPS - 08MCC99502

3F	AB3 GATES - 410DISC1614, 410DISC1616, 410DISC1618
3G	AB3 GATES - 410DISC1613, 410DISC1615, 410DISC1617
3H	AB4 GATES - 410DISC1619, 410DISC1621, 410DISC1623
3J	AB4 GATES - 410DISC1620, 410DISC1622, 410DISC1624
3K	BLANK
3M	LOAD REACTOR FOR AB4, RAS PUMP 2 - 06M41202
4B	BLANK
4L	AB4, RAS PUMP 2 - 06M41202
5E	AB4, WAS PUMP 2 06M41302
5G	LOAD REACTOR FOR AB4, WAS PUMP 2 - 06M41302
5J	AER ELECT RM STBY FAN 2
5M	SECONDARY CLARIFIER 4 - 06M41101
6L	480 V XMFR MAIN BREAKER 1600A

[Back to the Drawing](#)



08MCC99501	EATON CUTLER-HAMMER FREEDON SERIES 2100 MOTOR CONTROL CENTER	OCT.00 H. BUS 1200A 65 480V 3PH 3W 60 HZ SECT. 1, 4-6, 8 - 1200A	MP001519 IT.003-FVC SHORT-CIRCUIT-CURRENT RATING 65,000 AMPS RMS SYM 600 VOLTS MAXIMUM
	Location: PEPS	SECT. 2, 7 - 600A SECT. 3 - 300A	
Bucket NO.			
1D	08P11001 - PRIMARY EFFLUENT PUMP 1		08P11001
1H	08P11002 - PRIMARY EFFLUENT PUMP 2		08P11002
1M	08P11003 - PRIMARY EFFLUENT PUMP 3		08P11003
2D	MAIN BREAKER NO. 2		
2F _L	08FCV12101 - AB NO. 1 INFLUENT CONTROL VALVE		08FCV12101
2F _R	08FCV12201 - AB NO. 2 INFLUENT CONTROL VALVE		08FCV12201
2H _L	INSTRUMENT PANEL ATS FEEDER (08IP99501)		08IP99501
	1 MAIN		
	2 SPACE		
	3 MAIN		
	4 SPACE		
	5 LOCAL CONTROL PANEL 08LCP00505 (PLC)		08LCP00505
	6 SPARE		
	7 SPARE		
	8 SPARE		
	9 AERATION BASIN 1 FLOW TRANSMITTER - 08FIT12101		08FIT12101
	10 SPARE		
	11 AERATION BASIN 2 FLOW TRANSMITTER - 08FIT12201		08FIT12201
	12 SPARE		
	13 AERATION BASIN 3 FLOW TRANSMITTER - 08FIT12301		08FIT12301
	14 SPARE		
	15 AERATION BASIN 4 FLOW TRANSMITTER - 08FIT12401		08FIT12401
	16 SPARE		
	17 SPARE		
	18 SPARE		
	19 EFFLUENT WET WELL NO. 1 LEVEL		08FIT10101
	20 SPARE		
	21 EFFLUENT WET WELL NO. 2 LEVEL		08FIT10102
	22 SPARE		
	23 HEADBOX pH METER		
	24 SPARE		
	25 AERATION BASIN INFLUENT HEADBOX LEVEL		08LIT12001
	26 SPARE		
	27 SPARE		
	28 SPARE		
	29 SPARE		
	30 SPARE		
2H _L	INSTRUMENT PANEL ATS FEEDER (08IP99501)		08IP99501
2H _R	POWER PANEL ATS FEEDER (08PP99501)		08PP99501
	1 LIGHTING METERING ROOM (UNSWITCHED)		
	2 HVAC CONTROL PANEL		
	3 LIGHTING ELECT./MECH. ROOM		
	4 REUSE VAULT SUMP PUMP		
	5 TEST SHACK		
	6 PRIMARY EFFLUENT AIR		
	7 LIGHTING IN STAIRWELL		
	8 PRIMARY EFFLUENT AIR		
	9 SPARE		
	10 SPARE		
	11 SPARE		
	12 SPARE		
	13 SPARE		
	14 SPARE		
	15 SPARE		
	16 SPARE		
	17 SPARE		
	18 SPARE		
	19 RECEPTACLES METERING ROOM		
	20 SPARE		
	21 RECEPTACLES ELECTRIC ROOM		
	22 SPARE		
	23 RECEPTACLES MECHANICAL ROOM		
	24 SPARE		
	25 RECEPTACLES PUMP AREA		
	26 SPARE		
	27 RECEPTACLES BUILDING EXTERIOR		
	28 SPARE		
	29 RECEPTACLES METERING ROOM		
	30 SPARE		
	31 SPARE		
	32 SPARE		
	33 SPARE		
	34 SPARE		
	35 SPARE		
	36 SPARE		
	37 SPARE		
	38 SPARE		
	39 LIGHTING EXIT / EMERGENCY		
	41 SCADA RECEPTACLE		
40/42	LIGHTING PANEL 08LP99501		08LP99501
	1 SPACE		
	2 SPACE		
	3 SPACE		
	4 SPACE		
	5 SPACE		
	6 SPACE		
	7 SPACE		
	8 SPACE		
	9 SPACE		
	10 SPACE		
	11 SPACE		
	12 SPACE		
	13 SPACE		
	14 SPACE		
	15 SPACE		
	16 SPACE		
	17 SPACE		
	18 SPACE		
	19 SPACE		
	20 SPACE		
	21 SPACE		
	22 SPACE		
	23 SPACE		
	24 SPACE		
	25 SPACE		
	26 SPACE		
	27 LIGHTING ELECT/MECH ROOM - SWITCH b		
	28 WALKWAY AND MONUMENT		
	29 LIGHTING AT PUMP AREA SWITCH c		
	30 SOUTH STAIRWAY LIGHT 08PP99501-39		
	31 LIGHTING METERING ROOM - SWITCH e		
	32 SPARE		
	33 LIGHTING IN STAIRWELL SWITCH h		
	34 SPARE		
	35 LIGHTING BUILDING EXTERIOR SWITCH d		
	36 SPARE		
	37 SPARE		
	38 SPARE		
	39 SPARE		
	40 SPARE		
	41 SPARE		
	42 SPARE		
40/42	LIGHTING PANEL 08LP99501		08LP99501
2H _R	POWER PANEL ATS FEEDER (08PP99501)		08PP99501
2J	BLANK		
2M	08F99805 - SUPPLY FAN		08F99805
3C	MAIN-1 TVSS		
3E	MAIN-1 METERING		
3J	BLANK		
3M	AHF 1		
4M	MAIN BREAKER NO. 1		

[Back to the Drawing](#)

08MCC99502	EATON CUTLER-HAMMER FREEDON SERIES 2100 MOTOR CONTROL CENTER	SP098458 IT.001 - POC 11/03 H. BUS 1200 A 65 480 V 2 PH 60 HZ	SHOF RATIN 600 V
-------------------	--	---	------------------------

Location: PEPS

Bucket NO.

- 5B MAIN-2 METERING
- 5J TIE BREAKER
- 5M MAIN-2 TVSS
- 6M MAIN BREAKER NO. 2
- 7B_L 08FCV12401 - AB NO. 4 INFLUENT CONTROL VALVE
- 7B_R SPARE BREAKER
- 7E 08F99806 - EXHAUST FAN
- 7G_L **INSTRUMENT PANEL ATS FEEDER (08IP99501)**
 - 1 MAIN
 - 2 SPACE
 - 3 MAIN
 - 4 SPACE
 - 5 LOCAL CONTROL PANEL 08LCPP00505 (PLC)
 - 6 SPARE
 - 7 SPARE
 - 8 SPARE
 - 9 AERATION BASIN 1 FLOW TRANSMITTER 08FIT12101
 - 10 SPARE
 - 11 AERATION BASIN 2 FLOW TRANSMITTER 08FIT12201
 - 12 SPARE
 - 13 AERATION BASIN 3 FLOW TRANSMITTER 08FIT12301
 - 14 SPARE
 - 15 AERATION BASIN 4 FLOW TRANSMITTER 08FIT12401
 - 16 SPARE
 - 17 SPARE
 - 18 SPARE
 - 19 EFFLUENT WET WELL NO. 1 LEVEL - 08FIT10101
 - 20 SPARE
 - 21 EFFLUENT WET WELL NO. 2 LEVEL - 08FIT10102
 - 22 SPARE
 - 23 HEADBOX pH METER
 - 24 SPARE
 - 25 AERATION BASIN INFLUENT HEADBOX LEVEL - 08LIT12001
 - 26 SPARE
 - 27 SPARE
 - 28 SPARE
 - 29 SPACE
 - 30 SPACE
- 7G_L **INSTRUMENT PANEL ATS FEEDER (08IP99501)**
- 7G_R **POWER PANEL ATS FEEDER (08PP99501)**
 - 1 LIGHTING METERING ROOM
 - 2 HVAC CONTROL PANEL
 - 3 LIGHTING ELECT./MECH. ROOM

- 4 REUSE VAULT SUMP PUMP
- 5 TEST SHACK
- 6 PRIMARY EFFLUENT AIR
- 7 LIGHTING IN STAIRWELL
- 8 PRIMARY EFFLUENT AIR
- 9 SPARE
- 10 SPARE
- 11 SPARE
- 12 SPARE
- 13 SPARE
- 14 SPARE
- 17 SPARE
- 18 SPARE
- 19 RECEPTACLES METERING ROOM
- 20 SPARE
- 21 RECEPTACLES ELECTRIC ROOM
- 22 SPARE
- 23 RECEPTACLES MECHANICAL ROOM
- 24 SPARE
- 25 RECEPTACLES PUMP AREA
- 26 SPARE
- 27 RECEPTACLES BUILDING EXTERIOR
- 28 SPARE
- 29 RECEPTACLES METERING ROOM
- 30 SPARE
- 31 SPARE
- 32 SPARE
- 33 SPARE
- 34 SPARE
- 35 SPARE
- 36 SPARE
- 37 SPARE
- 38 SPARE
- 39 LIGHTING EXIT / EMERGENCY
- 41 SCADA RECEPTACLE
- 40/42 **LIGHTING PANEL 08LP99501**
 - 1 SPACE
 - 2 SPACE
 - 3 SPACE
 - 4 SPACE
 - 5 SPACE
 - 6 SPACE
 - 7 SPACE
 - 8 SPACE
 - 9 SPACE
 - 10 SPACE
 - 11 SPACE
 - 12 SPACE
 - 13 SPACE
 - 14 SPACE
 - 15 SPACE
 - 16 SPACE

17 SPACE
18 SPACE
19 SPACE
20 SPACE
21 SPACE
22 SPACE
23 SPACE
24 SPACE
25 SPACE
26 SPACE
27 LIGHTING ELECT/MECH ROOM SWITCH b
28 WALKWAY AND MONUMENT LIGHTING
29 LIGHTING AT PUMP AREA SWITCH c
30 SOUTH STAIRWAY LIGHT 08PP99501-39
31 LIGHTING METERING ROOM SWITCH e
32 SPARE
33 LIGHTING IN STAIRWELL SWITCH h
34 SPARE
35 LIGHTING BUILDING EXTERIOR SWITCH d
36 SPARE
37 SPARE
38 SPARE
49 SPARE
40 SPARE
41 SPARE
42 SPARE

40/42 LIGHTING PANEL 08LP99501

7G_R **POWER PANEL ATS FEEDER (08PP99501)**
7J SPARE STARTER
7M 08HP99501 - HVAC PANEL
8D 08P11004 - PRIMARY EFFLUENT PUMP 4
8H 08P11005 - PRIMARY EFFLUENT PUMP 5
8M 08P11006 - PRIMARY EFFLUENT PUMP 6
9C BLANK
9F AHF 2
9H BLANK
9K BLANK
9M BLANK

[Back to the Drawing](#)

RT-CIRCUIT-CURRENT
VIG 65,000 AMPS RMS SYM
OLTS MAXIMUM

08FCV12401

08F99806
08IP99501

08LCPP00505

08FIT12101

08FIT12201

08FIT12301

08FIT12401

08FIT10101

08FIT10102

08LIT12001

08IP99501
08PP99501

08LP99501

08LP99501

08PP99501

08HP99501

08P11004

08P11005

08P11006

AHF 2

5001	EATON CUTLER-HAMMER		PO4910 IT.5 -FCV		SHORT-CIRCUIT-CURRENT
	FREEDON SERIES 2100		SEPT. 92 H. BUS 600 A		RATING 65,000 AMPS RMS SYM
	MOTOR CONTROL CENTER		480V 3PH 4W 60 HZ		600 VOLTS MAXIMUM
	Location: AB Elec. Room (5020)				
Bucket NO.					
1B	SCUM PUMP NO. 1 SCP-6301				
1D	AERATION BASIN MIXER NO. 1 ABM-5301				
1F	AERATION BASIN MIXER NO. 3 ABM-5303				
1H	AERATION BASIN MIXER NO. 5 ABM-5305				
1K	EXHAUST FAN EF-6001				
1M	INCOMING POWER				
2B	AERATION BASIN MIXER NO. 9 ABM-5309				
2D	BLANK				
2F	DRAIN PUMP NO. 1 DP-6301				
2H	AERATION BASIN MIXER NO. 7 ABM-5307				
2K	DRAIN PUMP NO. 3 DP-6303				
2M	DRAIN PUMP NO. 1 DP-5001				
3B	EXHAUST FAN EF-6002				
3D	BLANK				
3H	ANAEROBIC RECYCLE PUMP ARP-5301				
3M	MAKEUP AIR UNIT MU-6001				
4B	EXHAUST FAN EF-6003				
4C	RETURN ACTIVATED SLUDGE PUMP RASP-6301				
4D	BLANK				
4E	XFMR-50H				
4H	BLANK				
4M	DEWATERING PUMP NO. 1 DWP-6301				
5B	RETURN ACTIVATED SLUDGE PUMP NO. 4 RASP-6204				
5H	INSTRUMENT PANEL IP-5010				
	1	Information to be added later		2	Information to be added later
	3	Information to be added later		4	Information to be added later
	5	Information to be added later		6	Information to be added later
	7	Information to be added later		8	Information to be added later
	9	Information to be added later		10	Information to be added later
	11	Information to be added later		12	Information to be added later
	13	Information to be added later		14	Information to be added later
	15	Information to be added later		16	Information to be added later
	17	Information to be added later		18	Information to be added later
	19	Information to be added later		20	Information to be added later
	21	Information to be added later		22	Information to be added later
	23	Information to be added later		24	Information to be added later
	25	Information to be added later		26	Information to be added later
5H	INSTRUMENT PANEL IP-5010				
5M	10 KVA TRANSFORMER				
6C	RETURN ACTIVATED SLUDGE PUMP NO. 2 RASP-6102				
6D	BFV-5301				
6E	BFV-6005				
6F	BFV-6006				
6G	BFV-6007				
6H	BLANK				
6J	WASTE ACTIVATED SLUDGE PUMP WASP-6301				
6K	BLANK				
6M	BLANK				

[Back to the Drawing](#)

5002	EATON CUTLER-HAMMER FREEDON SERIES 2100 MOTOR CONTROL CENTER	PO4910 IT.5 -FCV SEPT. 92 H. BUS 600 A 480V 3PH 4W 60 HZ	SHORT-CIRCUIT-CURRENT RATING 65,000 AMPS RMS SYM 600 VOLTS MAXIMUM
	Location: AB Elec. Room (5020)		
Bucket NO.			
1A	ACC UNIT NO. 2 ACC99805		
1B	BLANK		
1F	DRAIN PUMP NO. 2 DP-5002		
1K	BLANK		
1M	INCOMING POWER		
2B	AERATION BASIN MIXER NO. 2 ABM-5302		
2D	AERATION BASIN MIXER NO. 4 ABM-5304		
2F	AERATION BASIN MIXER NO. 6 ABM-5306		
2H	AERATION BASIN MIXER NO. 8 ABM-5308		
2K	DRAIN PUMP NO. 2 DP-6302		
2M	BLANK		
3C	SCUM PUMP NO. 2 SCP-6302		
3D	SPARE		
3F	SPARE STARTER		
3G	BUTTERFLY VALVE BYPASS B-6007 BFV-6012		
3H	BUTTERFLY VALVE SUCTION B-6007 BFV-6011		
3J	BUTTERFLY VALVE DISCHARGE B-6007 BFV-6013		
3K	BLANK		
3M	BLANK		
4C	RETURN ACTIVATED SLUDGE PUMP NO. 3 RASP-6203		
4F	AB4 MLSS RECYCLE PUMP 06P04301		
4G	WASTE ACTIVATED SLUDGE PUMP NO. 2 WASP-6302		
4H	SPARE		
4L	XFMR-5014		
4M	BLANK		
5E	MLSS RECYCLE PUMP MRP-5301		
5F	BUTTERFLY VALVE SUCTION B-6006 BFV-6008		
5G	BUTTERFLY VALVE BYPASS B-6006 BFV-6009		
5H	BUTTERFLY VALVE DISCHARGE B-6006 BFV-6010		
5J	LP-5012		
	1 TUNNEL N. END LIGHTS		
	2 TUNNEL SOUTH END LIGHTS		
	3 TUNNEL N. END LIGHTS		
	4 TUNNEL SOUTH END LIGHTS		
	5 TUNNEL N. END LIGHTS		
	6 TUNNEL SOUTH END LIGHTS		
	7 BLOWER AREA LIGHTS		
	8 RAS P.S. (HPS) SOUTH LIGHTS		
	9 TUNNEL 24HR (NIGHT) LIGHTS		
	10 RAS P.S. (HPS) SOUTH LIGHTS		
	11 RAS P.S. SOUTH 24HR (NIGHT) LIGHTS		
	12 RAS P.S. (HPS) SOUTH LIGHTS		
	13 RAS P.S. SOUTH LIGHTS		
	14 RAS P.S. NORTH LIGHTS		
	15 RAS P.S. SOUTH LIGHTS		
	16 RAS P.S. NORTH LIGHTS		
	17 RAS P.S. SOUTH LIGHTS		
	18 RAS P.S. NORTH LIGHTS		
	19 RAS P.S. NORTH 24HR (NIGHT) LIGHTS		
	20 RAS P.S. CENTER LIGHTS		
	21 AB TUNNEL 24HR (NIGHT) LIGHTS		
	22 RAS P.S. CENTER LIGHTS		
	23 MECHANICAL ROOM LIGHTS		
	24 RAS P.S. CENTER LIGHTS		
	25 AB TUNNEL LIGHTS		
	26 SUBST./HVAC/TUNNEL LIGHTS		
	27 AB TUNNEL LIGHTS		
	28 SUBSTATION ROOM NIGHT LIGHTS		
	29 AB TUNNEL LIGHTS		
	30 AB TUNNEL (HPS) LIGHTS		
	31 SUBSTATION ROOM LIGHTS		
	32 SUBST. ROOM (HPS) LIGHTS		
	33 SUBSTATION ROOM LIGHTS		
	34 SUBST. ROOM (HPS) LIGHTS		
	35 SUBSTATION ROOM LIGHTS		
	36 SUBST. ROOM (HPS) LIGHTS		
	37 CHEM BLDG TUNNEL-ELEV LIGHTS		
	38 CHEM BLDG TUNNEL NIGHT LIGHTS		
	39 CHEM BLDG TUNNEL-ELEV LIGHTS		
	40 SPARE		
	41 CHEM BLDG TUNNEL-ELEV LIGHTS		
	42 RAS P.S. STAIRWAY LIGHTS		
5J	LP-5012		
5M	AIR HANDLING UNIT AHU-5001		
6B	DRAIN PUMP NO. 4 DP-6304		
6D	CLARIFIER DRIVE CD-6301		
6F	NPW BOOSTER PUMP NPWP-6301		

5030	EATON CUTLER-HAMMER		PO4910 IT.5 -FCV	SHORT-CIRCUIT-CURRENT
	FREEDON SERIES 2100		SEPT. 92 H. BUS 600 A	RATING 65,000 AMPS RMS SYM
	MOTOR CONTROL CENTER		480V 3PH 4W 60 HZ	600 VOLTS MAXIMUM
	Location: AB Elec. Room (5020)			
Bucket NO.				
1B	INCOMING LINE			
D	SPACE			
1F	BLANK			
1H	BLANK			
1L	POLE BUILDING POWER			
1M	BLANK			
2B	AERATION BASIN MIXER ABM-5101			
2D	AERATION BASIN MIXER ABM-5103			
2F	AERATION BASIN MIXER ABM-5105			
2H	AERATION BASIN MIXER ABM-5107			
2K	AERATION BASIN MIXER ABM-5109			
2M _L	WAS PUMP - MOT 1 6101			
2M _R	WAS PUMP - MOT 2 6102			
3D	ANAEROBIC RECYCLE PUMP ARP-5105			
3J	MLSS RECYCLE PUMP MRP-5101			
3K	BLANK			
3M	AERATION BASIN MIXER ABM-5202			
4B	AERATION BASIN MIXER ABM-5204			
4D	AERATION BASIN MIXER ABM-5206			
4F	AERATION BASIN MIXER ABM-5208			
4K	CHANNEL AERATION BLOWER B-5301			
4M	SPARE STARTER			
5A	BLANK			
5C	BUTTERFLY BFV-5105			
5H	INSTRUMENT PANEL IP-5032			
	1			
	2			
	3			
	4			
	5	AIT-5133		
	6	AIT-5233		
	7	AIT-5134		
	8	AIT-5234		
	9			
	10	FIT-5240		
	11	CP-5301		
	12	CP-5034		
	1	COOLING FAN		
	2	PANEL LIGHTS AND RECEPTACLES		
	3	MAIN 24V DC POWER SUPPLY		
	4	BACKUP 24V DC POWER SUPPLY		
	5	CONTROL PANEL INSTRUMENTS		
	6	5V DC POWER SUPPLY		
	7	FIELD I/O		
	8	TI RAM, LAM AND DDM		
	9	I/O PLC 4 BASE 11		
	10	I/O PLC 4 BASE 2		
	11	ANNUNCIATOR		
	12	L22 WAS VFD I/O		
	13	SPARE		
	14	SPARE		
	15	SPARE		
	16	SPARE		
	12	CP-5034		
	13	CP-5302		
	14	CP-5034		
	15	FIT-5140		
	16	SPARE		
	17	SPARE		
	18	SPARE		
	19	SPARE		
	20	SPARE		
	21	SPARE		
	22	SPARE		
	23	SPARE		
	24	SPARE		
	25	SPACE		
	26	SPACE		
	27	SPACE		
	28	SPACE		
	29	SPACE		
	30	SPACE		
5H	INSTRUMENT PANEL IP-5032			
5K _L	INSTRUMENT TRANSFORMER BREAKER			
5K _R	INSTRUMENT PANELBOARD BREAKER			

5M	INSTRUMENT TRANSFORMER 5033	
Back to the Drawing		

5031	EATON CUTLER-HAMMER FREEDON SERIES 2100 MOTOR CONTROL CENTER	PO4910 IT.5 -FCV SEPT. 92 H. BUS 600 A 480V 3PH 4W 60 HZ	SHORT-CIRCUIT-CURRENT RATING 65,000 AMPS RMS SYM 600 VOLTS MAXIMUM
	Location: AB Elec. Room (5020)		
Bucket NO.			
1B	INCOMING LINE		
1F	SPACE		
1H _L	WAS PUMP - MOT 3 6201		
1H _R	WAS PUMP - MOT 4 6202		
1K	SPARE (M.T.)		
1M	BLANK		
2B	AERATION BASIN MIXER ABM-5102		
2D	AERATION BASIN MIXER ABM-5104		
2F	AERATION BASIN MIXER ABM-5106		
2H	AERATION BASIN MIXER ABM-5108		
2K	AERATION BASIN MIXER ABM-5201		
2M	BUTTERFLY VALVE BFV-5201		
3D	ANAEROBIC RECYCLE PUMP ARP-5201		
3J	MLSS RECYCLE PUMP MRP-5201		
3K	BLANK		
3M	AERATION BASIN MIXER ABM-5203		
4B	AERATION BASIN MIXER ABM-5205		
4D	AERATION BASIN MIXER ABM-5207		
4F	AERATION BASIN MIXER ABM-5209		
4K	CHANNEL AERATION BLOWER B-5302		
4M	SPARE STARTER		
5C	RETURN ACTIVATED SLUDGE PUMP NO. 1 RASP-6101		
5D	BLANK		
5G	RETURN ACTIVATED SLUDGE PUMP NO. 2 RASP-6302		
H _L	AB1 GATES 410DISC1602, 410DISC1604, 410DISC1606		
H _R	AB1 GATES 410DISC1601, 410DISC1603, 410DISC1605		
5K	BLANK		
5M _L	AB2 GATES 410DISC1608, 410DISC1610, 410DISC1612		
5M _R	AB2 GATES 410DISC1607, 410DISC1609, 410DISC1611		

[Back to the Drawing](#)

9001	EATON CUTLER-HAMMER FREEDON SERIES 2100 MOTOR CONTROL CENTER	PO4910 IT.5 -FCV SEPT. 92 H. BUS 600 A 480V 3PH 4W 60 HZ	SHORT-CIRCUIT-CURRENT RATING 65,000 AMPS RMS SYM 600 VOLTS MAXIMUM
	Location: Filter Ctrl Room (9015)		
Bucket NO.			
1J	BLANK		
1L	INCOMING POWER		
1M	BLANK		
2D	BLANK		
2E	FILTER NO. 5 BFV'S		
2F	FILTER NO. 7 BFV'S		
2G	FILTER NO. 9 BFV'S		
2H	FILTER NO. 11 BFV'S		
2J	FILTER NO. 13 BFV'S		
2K	PP-9009		
	1 LC-9001		
	2 LC-9012		
	3 LC-9013		
	4 LC-9016		
	5 TUNNEL RECEPT. FILTERS 5-8		
	6 ELECT./HVAC ROOM RECEPT.		
	7 PUMPING STATION RECEPT.		
	8 ELECT./HVAC ROOM RECEPT.		
	9 EMERGENCY & EXIT LIGHTS		
	10 SITE LIGHTING PHOTO CELL		
	11 TUNNEL RECPT. FILTERS 9-13		
	12 SPARE		
	13 SITE LIGHTS FILTERS 5-8		
	14 EMERGENCY & EXIT LIGHTS		
	15 SITE LIGHTS FILTERS 9-13		
	16 LC-9017		
	17 SITE RECEPT. FILTERS 9-13		
	18 SITE RECEPT. FILTERS 9-13		
	19 SITE RECEPT. SEC EFF DIST.		
	20 SPARE		
	21 MAGNA DRIVE REUSE PUMP		
	22 SPARE		
	23 CCB1 ORP 07AIT93401		
	24 SPARE		
	25 CCB2 ORP 07AIT93402		
	26 SPRINKLER CLOCK		
	27 CCB3 ORP 07AIT93403		
	28 HEAT TRACE ON ROOF 9-13		
	29 SPACE		
	30 SPACE		
2K	PP-9009		
2L	BACKWASH CONTROL		BFV-9097
2M	BLANK		
3D	NONPOTABLE WATER PUMP NO. 3		NPWP-9003
3J	NONPOTABLE WATER PUMP NO. 1		NPWP-9001
3K	SLUICE GATE OPERATOR		SUG-9001
3M	BLANK		
4D	SURFACE WASH PUMP NO. 1		SWP-9001
4F	DRAIN PUMP NO. 1		DP-9001
4H	DRAIN PUMP NO. 3		DP-9003
4K	BISULFITE MIXER NO. 2		CM-9002
4M	EXHAUST FAN NO. 2		EF-9002
5A	NPW STRAINER		ST-9001
5H	IP-9006		
	1 REUSE ANALYZER		
	2 PRE-DECHLOR D.O. AE/AIT9751		
	3 AIT-9751		
	4 LIT'S FILTERS 5-8		
	5 FILTERS 5-8		
	6 LIT'S FILTERS 9-13		
	7 FILTERS 9-13		
	8 SONIC FLOW METER		
	9 ANALYZER 1		
	10 SONIC FLOW METER		
	11 ANALYZER 4		
	12 PRE-DECHLOR pH meter		
	13 REUSE TURBIDITY		
	14 FILTERS 1-4 TURBIDITY		
	15 SPARE		
	16 CCB RESIDUAL ANALYZER		
	17 1&2 DRAIN PUMP		
	18 FIRE ALARM CONTROL PANEL		
	19 3&4 DRAIN PUMP		
	20 SEC CHEM NO. 2 pH		
	21 AE-9098A		
	22 AE-9697A		
	23 SPARE		

	24	FILTERS 1-4 LEVEL TRANSMITTER	
	26	TRUCK SCALE POWER	
	25/27	CP-9034	
		COOLING FAN	
		PANEL LIGHTS AND RECEP	
		MAIN 24VDC POWER SUPPLY	
		BACKUP 24VDC POWER SUPPLY	
		ANNUNCIATOR	
		5VDC POWER SUPPLY	
		FIELD I/O	
		TI RAM, LAM & DDM	
		I/O PLC 1, CH6, BASE 5	
		I/O PLC 1, CH6, BASE 6	
		CHEM TUNNEL DISINFECTION PUMP SUCTION VALVES	
		CONTROL PANEL INSTRUMENTS	
		FIBER & UPS	
	25/27	CP-9034	
	28	SEC CHEM NO. 3 pH	
	29		
	30	SPARE	
	31		
	33		
	32/34	CP-9015	
		COOLING FAN	
		LIGHTS AND RECEP.	
		ANNUNCIATOR POWER SUPPLY	
		SPARE	
		SPARE	
		OPERATOR INTERFACE	
		I/O PLC 1, CH 5, BASE 1	
		I/O PLC 1, CH 5, BASE 1	
		I/O PLC 1, CH 5, BASE 2	
		I/O PLC 1, CH 5, BASE 3	
		I/O PLC 1, CH 5, BASE 4	
		I/O PLC 1, CH 5, BASE 5	
		I/O PLC 1, CH 5, BASE 6	
		I/O PLC 1, CH 5, BASE 7	
		I/O PLC 1, CH 5, BASE 8	
		FIELD DEVICES	
		FIELD DEVICES	
		I/O PLC 1, CH 6, BASE 1	
		I/O PLC 1, CH 6, BASE 2	
		I/O PLC 1, CH 6, BASE 3	
		I/O PLC 1, CH 6, BASE 4	
		PANEL INSTRUMENTS	
		SPARE	
		MAIN ANALOG 24VDC P.S.	
		BACKUP ANALOG 24VDC P.S.	
	32/34	CP-9015	
	5H	IP-9006	
	5M	XFMR-9007 10 KVA	
	6B	EXHAUST FAN NO. 1	EF-9001
	6D	EXHAUST FAN NO. 3	EF-9003
	6F	PRESSURIZATION UNIT	PU-9001
	6G	LP-9008 FEEDER	
	1	FILTER/PMP STA. LIGHTS	
	2	TUNNEL LIGHTS FILTERS 5-8	
	3	FILTER/PMP STA. LIGHTS	
	4	TUNNEL LIGHTS FILTERS 5-8	
	5	FILTER/PMP STA. LIGHTS	
	6	TUNNEL LIGHTS FILTERS 5-8	
	7	FILTER/PMP STA. LIGHTS	
	8	TUNNEL LIGHTS FILTERS 9-13	
	9	ELECTRIC ROOM LIGHTS	
	10	TUNNEL LIGHTS FILTERS 9-13	
	11	ELECTRIC ROOM LIGHTS	
	12	TUNNEL LIGHTS FILTERS 9-13	
	13	HVAC ROOM LIGHTS	
	14	SPARE	
	15	NIGHT LIGHTS / STAIRS	
	16	NIGHT LIGHTS / STAIRS	
	17	SPARE	
	18	NIGHT LIGHTS	
	19	SPARE	
	20	SPARE	
	21	SPARE	
	22	SPARE	
	23	SPARE	
	24	SPARE	
	6G	LP-9008 FEEDER	
	6J	FOAM CONTROL PUMP	FCP-9001
	6M	MAKEUP AIR UNIT	MU-9001
Back to the Drawing			

9002	EATON CUTLER-HAMMER	PO4910 IT.5 -FCV	SHORT-CIRCUIT-CURRENT
	FREEDON SERIES 2100	SEPT. 92 H. BUS 600 A	RATING 65,000 AMPS RMS SYM
	MOTOR CONTROL CENTER	480V 3PH 4W 60 HZ	600 VOLTS MAXIMUM
	Location: Filter Ctrl Room (9015)		
Bucket NO.			
1J	BLANK		
1L	INCOMING POWER		
1M	BLANK		
2D	BLANK		
2E	FILTER NO. 6 BFV'S		
2F	FILTER NO. 8 BFV'S		
2G	FILTER NO. 10 BFV'S		
2H	FILTER NO. 12 BFV'S		
2J	BLANK		
2K	BLANK		
2M	BASIN DRAIN PUMP 410P8101		
3E	NONPOTABLE WATER PUMP NO. 2 NPWP-9002		
3G	CHEMICAL MIXER CM-6301		
3J	CHEMICAL MIXER CM-8301		
3L	BISULFITE MIXER CM-9001		
3M	BLANK		
4D	SURFACE WASH PUMP NO. 2 SWP-9002		
4E	BLANK		
4G	DRAIN PUMP NO. 2 DP-9002		
4J	WASH DOWN BOOSTER PUMP NPWP-9002		
4K	SLUICE GATE OPERATOR SUG-9002		
4M	REUSE MIXER		
5B	SPARE		
5D	AIR HANDLING UNIT AHU-9001		
5E	AIR COOLED CONDENSOR ACC-9001		
5G	DRAIN PUMP NO. 4 DP-9004		
5H	BFV LOW P CLEARWELL BFV-9098		
5M	BLANK		
Back to the Drawing			

9030	EATON CUTLER-HAMMER	PO4910 IT.5 -FCV	SHORT-CIRCUIT-CURRENT
	FREEDON SERIES 2100	SEPT. 92 H. BUS 600 A	RATING 65,000 AMPS RMS SYM
	MOTOR CONTROL CENTER	480V 3PH 4W 60 HZ	600 VOLTS MAXIMUM
	Location: Filter Ctrl Room (9015)		
Bucket NO.			
1B	ATI-XFMR FEEDER		
1E	CHEMICAL MIXER CM-6101		
1K	BLANK		
1M	INCOMING LINE		
2C	EXCESS FLOW RETURN PUMP EFRP-9003		
2E	CHEMICAL MIXER CM-8101		
2G	FILTER NO. 1 BVF'S		
2J	FILTER NO. 3 BVF'S		
2M	BLANK		
3E	REUSE PUMP RP-9001		
3F	BLANK		
3M	REUSE PUMP RP-9003		
Back to the Drawing			

9031	EATON CUTLER-HAMMER	PO4910 IT.5 -FCV	SHORT-CIRCUIT-CURRENT
	FREEDON SERIES 2100	SEPT. 92 H. BUS 600 A	RATING 65,000 AMPS RMS SYM
	MOTOR CONTROL CENTER	480V 3PH 4W 60 HZ	600 VOLTS MAXIMUM
	Location: Filter Ctrl Room (9015)		
Bucket NO.			
1C	EXCESS FLOW RETURN PUMP EFRP-9002		
1D	BLANK		
1K	REUSE PUMP RP-9004		
1M	INCOMING LINE		
2C	EXCESS FLOW RETURN PUMP EFRP-9004		
2E	FILTER NO. 2 BVF'S		
2G	FILTER NO. 4 BVF'S		
2H	BLANK		
2K	CHEMICAL MIXER CM-6201		
2M	CHEMICAL MIXER CM-8201		
Back to the Drawing			

10001 EATON CUTLER-HAMMER
FREEDON SERIES 2100
MOTOR CONTROL CENTER

PO49100 IT.11 -FCV
AUG. 92 H. BUS 600 A
480V 3PH 4W 60 HZ

Location: DC1

Bucket NO.

- 1M MAIN BREAKER
- 2D SLUDGE MIXER DIGESTER NO. 1
- 2H SLUDGE MIXER DIGESTER NO. 3
- 2K PLUG VALVE
- 2M PLUG VALVE
- 3B SLUDGE RECIRCULATION PUMP
- 3D ROLLUP DOOR
- 3F HEAT LOOP PUMP
- 3H DRAIN PUMP
- 3K SPARE
- 3M DMLP-10001
- 4B AIR HANDLING UNIT
- 4D PRESSURIZATION UNIT
- 4H GENERATOR ROOM EXHAUST FAN
- 4K GENERATOR ROOM EXHAUST FAN
- 4M DMLP-10003
- 5B HOT WATER BOILER PUMP
- 5D HEAT EXCHANGER HOT WATER PUMP
- 5F AUXILIARY HEAT LOOP PUMP
- 5H HEAT PUMP
- 5K HOT WATER BOILER PUMP
- 5M ENGINE JACKET WATER CIRCULATION PUMP
- 6B ENGINE PRELUBE OIL PUMP
- 6D SLUDGE RECIRCULATION PUMP
- 6F RELAY BUCKET 10001, RELAY BUCKET 10003
- 6H SLUDGE GRINDER
- 6K SLUDGE GRINDER
- 6M BLANK
- 7B SPARE
- 7D BLANK
- 7H **INSTRUMENT PANELBOARD**
 - 1 NO SCHEDULE
 - 2 NO SCHEDULE
 - 3 NO SCHEDULE
 - 4 NO SCHEDULE
 - 5 NO SCHEDULE
 - 6 NO SCHEDULE
 - 7 NO SCHEDULE
 - 8 NO SCHEDULE
 - 9 NO SCHEDULE
 - 10 NO SCHEDULE
 - 11 NO SCHEDULE
 - 12 NO SCHEDULE
 - 13 NO SCHEDULE

14 NO SCHEDULE
15 NO SCHEDULE
16 NO SCHEDULE
17 NO SCHEDULE
18 NO SCHEDULE
19 NO SCHEDULE
20 NO SCHEDULE
21 SPACE
22 SPACE
23 SPACE
24 SPACE
25 SPACE
26 SPACE
27 SPACE
28 SPACE
29 SPACE
30 SPACE

7H **INSTRUMENT PANELBOARD**
7K_L INSTRUMENT TRANSFORMER BREAKER
7K_R INSTRUMENT PANELBOARD BREAKER
7M INSTRUMENT TRANSFORMER
8B GENERATOR ROOM SUPPLY FAN
8M BLANK

[Back to the Drawing](#)

SECT 1 - NONE; SECT 2-8 - 300A
NEUTRAL 300A

TAG NO.

SM-10001
SM-10003
PV-10001
PV-10003
SRP-10001
RD-10001
HLP-10002
DP-10001

DMLP-10001
AHU-10001
PU-10001
EF-10001
EF-10002
DMLP-10003
HWBP-1001
HLP-10201
HLP-10004
HP-10001
HWB-10001

SRP-10003

SG-10001
SG-10003

IP-10003

IP-10003

SF-10001

10002 EATON CUTLER-HAMMER
FREEDON SERIES 2100
MOTOR CONTROL CENTER

PO49100 IT.7 -FCV
AUG. 92 H. BUS 1200 A
480V 3PH 4W 60 HZ

Location: DC1

Bucket NO.

1M MAIN BREAKER
2D SLUDGE MIXER DIGESTER NO. 2
2FR PLUG VALVE
2H SLUDGE RECIRCULATION PUMP
2K DMLP-10002
2M HEAT LOOP PUMP
3B HEAT LOOP PUMP
3D HEAT EXCHANGER HOT WATER PUMP
3FR DRAIN PUMP
3H SPARE
3K HOIST
3M PUMP ROOM EXHAUST FAN
4B GAS ROOM EXHAUST FAN
4D SPARE
4F AIR HANDLING UNIT
4H SPARE
4K RELAY BUCKET 10002
4M HOT WATER BOILER PUMP
5B SPARE
5D **LIGHTING PANELBOARD**
5F SLUDGE RECIRCULATION PUMP
5K BLANK
5M BLANK
6B **POWER PANELBOARD**
6D HEAT EXCHANGER HOT WATER PUMP
6F STARTING AIR COMPRESSOR
6H SLUDGE GRINDER
6K SLUDGE GRINDER
6M BLANK
7B NPW BOOSTER PUMP
7E PUMP ROOM SUPPLY FAN
7H GENERATOR ROOM SUPPLY FAN
7M BLANK

[Back to the Drawing](#)

SECT 1 - NONE; SECT 2-3 - 600A
SEC 4-5 - 300A; NEUTRAL 600A
MAIN SPB - 800A

TAG NO.

SM-10002
PV-10002
SRP-10002
DMLP-10002
HLP-10001
HLP-10003
HLP-10101
DP-10002

H-10001
EF-10003
EF-10004

AHU-10002

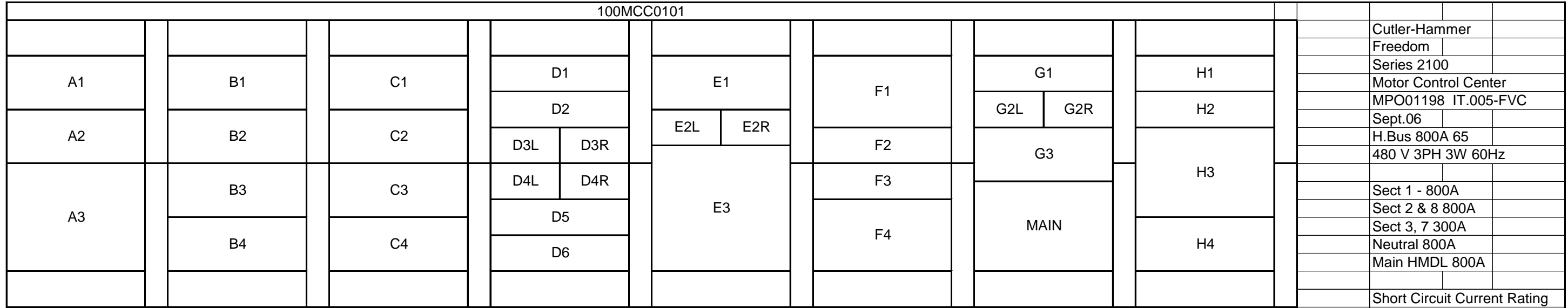
HWBP-10002

LP-10005
SRP-10004

PP-10006
HLP-10301
AC-10001
SG-10002
SG-10004

NPWP-10001
SF-10003
SF-10002

100MCC0101



Cutler-Hammer
Freedom
Series 2100
Motor Control Center
MPO01198 IT.005-FVC
Sept.06
H.Bus 800A 65
480 V 3PH 3W 60Hz

Sect 1 - 800A
Sect 2 & 8 800A
Sect 3, 7 300A
Neutral 800A
Main HMDL 800A

Short Circuit Current Rating
65,000 Amps RMS SYM
600 V Maximum

[Back to the Drawing](#)

Bucket NO.		Bucket NO.	
A1	IPS AHU HOT WATER PUMP - 100P0121	E3	THERMOSTAT RELAY COMPARTMENT
A2	IPS PUMP ROOM A HOT WATER CIRC PUMP - 100P0123	F1	IPS GROUND FLOOR A SUPPLY FAN - 100SF0101
A3	IPS ODOR CONTROL BLOWER #1 - 130B7001	F2	IPS WETWELL ACCESS RM SUPPLY FAN - 100SF0107
B1	IPS PUMP/MOTOR RM B SUPPLY FAN 1 - 100SF0105	F3	BLANK
B2	IPS ODOR CONTROL ROOM EXHAUST FAN - 100EF0111	F4	IPS GROUND FLOOR A EXHAUST FAN - 100EF0101
B3	IPS CONTROL VALVE ROOM EXHAUST FAN - 100EF0109	G1	BLANK
B4	IPS PUMP/MOTOR RM A EXHAUST FAN 1 - 100EF0103	G2L	IPS BRIDGE CRANE - 100ME0101
C1	IPS PUMP/MOTOR RM B EXHAUST FAN 1 - 100EF0105	G2R	SPARE
C2	IPS ODOR CONTROL RM SUPPLY FAN - 100SF0111	G3	TVSS BUS-A
C3	IPS CONTROL VALVE RM SUPPLY FAN - 100SF0109	G4	IPS MOTOR CONTROL CENTER - MAIN
C4	IPS PUMP/MOTOR RM A SUPPLY FAN 1 - 100SF0103	H1	BLANK
D1	BLANK	H2	BLANK
D2	BLANK	H3	TIE BREAKER
D3L	SPARE	H4	BLANK
D3R	IPS 100A SOURCE A - AT5/100XFMR0105 - 100IP0102		
D4L	AIR HANDLING UNIT - 100AHU0101		
D4R	SPARE		
D5	IPS WETWELL ACCESS RM EXHAUST FAN - 100EF0107		
D6	BLANK		
E1	DIST. POWER PANEL - 100DPP0101		
	1	2	
	3	4	P0111, 100P0112 (100LCP0
	5	6	
	7	8	
	9	10	P0111, 100P0112 (100LCP0
	11	12	
	13	14	
	15	16	100FV0116, 100FV0117
	17	18	
	19	20	



1
3
5
7
9
11
13
15
17
19
21
23
25
27
29
31
33
35
37
39
41

100IP0101			
1	SPARE	2	SPARE
3	SPARE	4	SPARE
5	SPARE	6	SPARE
7	HVAC NOTIF PNL CONTROL	8	BIOFILTER CONTROL PNL
9	HVAC NOTIF GO/NO-GO	10	SECURITY REC
11	HVAC NOTIF HORN/STROBE	12	SECURITY REC
13	100TC0151	14	SECURITY REC
15	100TC0152	16	DOOR LOCK POWER SUPPL
17	100TC0153	18	130FIT7001
19	100TC0155	20	100LCP0101 (PLC #14)
21	100TC0121	22	SECURITY REC
23	100TC0122	24	FIBER OPTIC SWITCH ENCL
25	100TC0123	26	SPARE
27	100TC0124	28	SPARE
29	WETWELLLEV (RFC 234.E)	30	100YS091, 100YS092, 100YS
31	SPARE	32	100YS094, 100YS095, 100YS
33	SPARE	34	SPARE
35	SPARE	36	SPARE
37	FUTURE LIT1	38	SPARE
39	FUTURE LIT2	40	SPARE
41	SPARE	42	SPARE

DIST. POWER PANEL - 100DPP0101			
1	100P0113 (100LCP0103)	2	100P0111, 100P0112 (100LCP0102)
3		4	
5		6	
7	ACCESS RM PORT PMP REC	8	100P0111, 100P0112 (100LCP0102)
9		10	
11		12	
13	100FV0118, 100FV0119	14	100FV0116, 100FV0117
15		16	
17		18	

10MCC0102									
	Return To Drawing								
Bucket NO.									TAG NO.
A1	BLANK								
A2a	IPS AIR COMPRESSOR								100AC0101
A2b	30 KVA TRANSFORMER - 100DLP0102								100XFMR0107/100DLP0102
	1	LC2 (PUMP ROOM B LTG)		2	LC4 (MOTOR ROOM B LTG)				
	3	LC5 (WET WELL RM LTG)		4	LC7 (NORTH STAIR LTG)				
	5	LC9 (GND FLOOR RM B LTG)		6	LC11 (VFD ROOM B LTG)				
	7	SPARE		8	OUTSIDE LIGHTING				
	9	LC3 (VALVE CNT RM LTG)		10	SPARE				
	11	SPARE		12	SPARE				
	13	SPARE		14	SPARE				
	15	SPARE		16	SPARE				
	17	SPARE		18	SPARE				
	19	SPARE		20	SPARE				
	21	SPARE		22	SPARE				
	23	SPARE		24	SPARE				
	25	SPARE		26	SPARE				
	27	SPARE		28	SPARE				
	29	SPARE		30	SPARE				
	31	SPARE		32	SPARE				
	33	SPARE		34	SPARE				
	35	SPARE		36	SPARE				
	37	SPARE		38	SPARE				
	39	SPARE		40	SPARE				
	41	SPARE		42	SPARE				
A2b	30 KVA TRANSFORMER								100XFMR0107/100DLP0102
A3	TVSS BUS-B								
A4	IPS MOTOR CONTROL CENTER 100MCC0102								
B1	DIST. POWER PANEL - 100DPP0102								100DPP0102
	1			2					
	3	100P0116 (100LCP0105)		4	100P0114, 100P0115 (100LCP0104)				
	5			6					
	7			8					
	9	ACCESS RM PORT PMP REC		10	SPARE				
	11			12					
	13			14					
	15	100FV0122, 100FV0123		16	SPARE				
	17			18					
	19			20					
	21	100FV0124, 100FV0125		22	000-M-0102 (IPS GATE)				
	23			24					
	25			26					
	27	100FV0126, 100FV0127		28	100FV0111, 100FV0112				
	29			30					
	31			32					
	33	100FV0107, 100FV0108		34	100FV0113, 100FV0114				
	35			36					
	37			38					
	39	100FV0109, 100FV0110		40	110GO0102				
	41			42					
B1	DIST. POWER PANEL								100DPP0102
B2a	IPS 100A SOURCE B - 100IP0101								ATS/100XFMR0105 100IP0102
	To see the schedule for this instrument panel, look on 100MCC0101								
B2a	IPS 100A SOURCE B								ATS/100XFMR0105 100IP0102
B2b	45 KVA TRANSFORMER - 100PP0102								100XFMR0104/100PP0102
	1	PUMP ROOM B REC		2	MOTOR ROOM B REC				
	3	WET WELL ACCESS ROOM REC		4	NORTH STAIRWELL REC				
	5	GND FLOOR ROOM B REC		6	VFD ROOMS REC				
	7	VALVE CONTROL RM REC		8	LC2 CONTROL POWER				
	9	LC4 CONTROL POWER		10	LC5 CONTROL POWER				
	11	LC7 CONTROL POWER		12	LC9 CONTROL POWER				
	13	LC11 CONTROL POWER		14	LC13 CONTROL POWER				
	15	SPARE		16	SPARE (RFC R34.E)				
	17	SPARE		18	SPARE				
	19	SPARE		20	SPARE				
	21	SPARE		22	100LCP0112 (100AF0102)				
	23	SPARE		24	100EF0110				
	25	SPARE		26	IRRIGATION PANEL				
	27	100ACU0101		28	SPARE				
	29	100ACU0101		30	SPARE				
	31	100M0108		32	SPARE				
	33	100M0108		34	SPARE				
	35	100AHU0102 LCP		36	SPARE				
	37	100AHU0102 LTG&REC		38	SPARE				
	39	SPARE		40	SPARE				
	41	BACKFLOW HEAT TRACE		42	SPARE				
B2b	45 KVA TRANSFORMER								100XFMR0104/100PP0102
B3	THERMOSTAT RELAY COMPARTMENT								

C1	IPS GROUND FLOOR B SUPPLY FAN	100SF0102
C2	IPS GROUND FLOOR B EXHAUST FAN	100EF0102
C3a	IPS BRIDGE CRANE	100ME0102
C3b	AIR HAND. UNIT	100AHU0102
C4a	SPARE	
C4b	IPS ELEC RM HEATER	100HC0108
D1	IPS PUMP/MOTOR RM A EXHAUST FAN 2	100EF0104
D2	IPS PUMP/MOTOR RM A SUPPLY FAN 2	100SF0104
D3	IPS PUMP/MOTOR RM B SUPPLY FAN 2	100SF0106
D4	IPS ELEC RM SUPPLY FAN	100SF0108
E1	IPS PUMP/MOTOR RM B EXHAUST FAN 2	100EF0106
E2	IPS ELEC EXHAUST FAN	100EF0108
E3	IPS AHU2 HOT WATER PUMP	100P0122
E4	IPS PUMP ROOM B HOT WATER CIRC PUMP	100P0124
F1	BLANK	
F2	BLANK	
F3	BLANK	
F4	IPS ODOR CONTROL BLOWER #2	130B7002
G1	BLANK	
G2	BLANK	
G3	BLANK	
G4	BLANK	
G5	BLANK	
G6	BLANK	

11MCC10001

EATON CUTLER-HAMMER
FREEDON SERIES 2100
MOTOR CONTROL CENTER

PO4910 IT.5 -FCV
SEPT. 92 H. BUS 600 A
480V 3PH 4W 60 HZ

Location: Solids Electrical Room

Bucket NO.

1M DCF SLUDGE PUMP 1
2B_L GT INLET CONTROL VALVE 1
2B_R GT INLET CONTROL VALVE 3
2D_L TSP SLUDGE GRINDER 1
2D_R DC4 SLUDGE FEED ISOLATION VALVE
2M DIGESTER FEED PUMP 1
3B_L DIGESTED SLUDGE TRANSFER GRINDER
3B_R DCF SLUDGE GRINDER
3D BRIDGE CRANE
3M DIGESTER FEED PUMP 3
4B_L TUNNEL AREA WELDER RECEPTACLE
4B_R MAIN FLOOR WELDER RECEPTACLE
4E CONVEYOR 1
4M SPARE
5B_L **TO 11ATS10001 AT 11MCC10002**
5B_R **TO 11ATS10002 AT 11MCC10001**
5E CONVEYOR 5
5M SPARE
7B DIRECT FIRED MAKEUP AIR UNIT
7E CONVEYOR 9
7M VFA DISCHARGE PUMP 1
8G DEWATERING CENTRIFUGE 4 CONTROL PANEL
8J_L MAIN DOOR
8J_R INDIRECT FIRED MAKEUP AIR UNIT
8M SPARE
9B_L SPARE
9B_R FERRIC FEED CONTROL VALVE
9E ODOR CONTROL BLOWER
9M TCF PUMP 1
10B CENTRATE TANK 1 MIXER
10D WAS/CHEM STORAGE TANK BLOWER 1
10E BLANK
10M TCF PUMP 3
11B CONVEYOR 3
11D CONVEYOR 7
11F BLANK
11H BLANK
11K BLANK
11M BLANK
12M ATS (SEE ROW 243)
13B DIGESTER FEED TANK 1 MIXER

13D	POLYMER RECIRCULATION PUMP 1
13F	SPARE
13M	BLANK
14A	BLANK
14E	SPARE
14M	VFA RETURN PUMP 1
15C	MAIN TVSS
15E	MAIN METERING
15M	BLANK
16B _L	SPARE
16B _R	SILO 1 FEED HI LEVEL SHUT OFF
16D	DRY POLYMER FEED UNIT CONTROL PANEL
16F	POLYMER TANK 1 MIXER
16M	BLANK
17B _L	SPARE
17B _R	POLYMER MIXING TANK 1 OUTLET VALVE
17E	BLANK
17M	POLYMER METERING PUMP 1
18B _L	SPARE
18B _R	SPARE
18M	POLYMER METERING PUMP 3
19B _L	[ARE
19B _R	POLYMER AGING TANK 1 INLET VALVE
19E	BLANK
19M	POLYMER METERING PUMP 5
20B _L	S[ARE
20B _R	POLYMER AGING TANK 3 INLET VALVE
20D _L	SPARE
20D _R	SPARE
20E	BLANK
20M	POLYMER METERING PUMP 7
21B _L	SPARE
21B _R	SPARE
21D	SPARE
21F	SPARE
21M	NEAT POLYMER METERING PUMP 1
22B _L	SPARE
22B _R	SPARE
22D _L	SPARE
22D _R	SPARE
22E	BLANK
22M	CENTRATE PUMP 1

[Back to the Drawing](#)

SHORT-CIRCUIT-CURRENT
RATING 65,000 AMPS RMS SYM
600 VOLTS MAXIMUM

TAG NO.

10P31101

11FCV10101

11FCV10103

11M12101

11FV40101

11P31101

10M31301

11M10101

11M99701

11P31103

11R10001

11R10002

11M14501

11M14505

11M99801

11M14509

11P11201

11LCP40001

11P99701

11M99803

11FV96403

11M99804

11P30201

11M20101

11M30101

11P30203

11M14503

11M14507

11ATS10002

11M31201

11P92501

11P11301

11FV92101
11LEP92201

11FV92212

11P92901

11P92903

11FV92811

11P92905

11FV92831

11P92907

11P92601

11P20201

1		2		3		4		5		6		7		8		9		10		11	
1BL	1BR	2G		3C		4B		5BL	5BR	6B		Blank Corner Section		8C		9M		10F		11B	
1E				4E		5E		6E		8E				11DL				11DR			
1M		2JL	2JR	3M		4M		5M		6M				8M				10M		11M	
		2LL	2LR																		
		2M																			

[Return to Drawing](#)

12		13		14		15		16		17		18		19		20		21		22	
12B		13B		14B		15B		16B		17B		18B		19B		20B		21B		22B	
12D		13D		14DL	14DR	15DL	15DR	16DL	16DR	17D		18E		19E		20E		21E		22E	
12F		13F		14F		15FL	15FR	16FL	16FR	17F		18M		19M		20M		21M		22G	
12H		13H		14M		15HL	15HR	16HL	16HR	17M										22K	
12K		13K				15KL	15KR	16KL	16KR	22M											
12M		13M		15ML		15MR		16M													

1BL	11P12302 - WASSTRIP TRANSFER PUMP 1	6B	11FCV10102 - GF INLET CONTROL VALVE	13B	BLANK	16B	BLANK	20B	BLANK
2BR	11M92091 - DRY POLYMER AIR COMPRESSOR	6E	11F99802 - CENTRIFUGAL INLINE FAN	13D	BLANK	16D	SPARE BREAKER	20E	NO TAG - LOCKED OUT
1E	SPARE BREAKER	6M	11P30202 - TCF PUMP 2	13F	SPARE BREAKER	16FL	SPARE BREAKER	20M	11P92906 POLYMER METERING PUMP 6
1M	SPARE VFD	8C	MAIN TVSS	13H	SPARE STARTER	16FR	SPARE BREAKER	21B	BLANK
2G	11LCP50001 - DEWATERING CENTRIFUGE 5 CONTROL PANEL	8E	MAIN METERING	13K	SPARE STARTER	16HL	SPARE BREAKER	21E	BLANK
2JL	11M12103 - TSP GRINDER 3	8M	11P20202 - CENTRATE PUMP 2	13M	SPARE STARTER	16HR	11M99806 - DEHUMIDIFIER UNIT	21M	SPARE VFD
2JR	11FV50101 - CENTRIFUGE 5 SLUDGE FEED ISOLATION VALVE	9M	11ATS10001 - AUTOMATIC TRANSFER SWITCH	14B	11M92202 - POLYMER TANK 2 MIXER	16KL	11M99805 - AIR CONDITION UNIT	22B	BLANK
2LL	TO 11ATS10002 AT 11MCC10001 / POWER PANEL	10F	10P10401 - DSHT1 MIXER	14DL	11R10003 - SECOND FLOOR WELDER RECEPTACLE	16KR	SPARE BREAKER	22E	BLANK
2LR	TO 11ATS10001 AT 11MCC10002	10M	BLANK	14DR	11R10004 - ROOF WELDER RECEPTACLE	16M	SPARE BREAKER	22G	BLANK
2M	BLANK	11B	11P99303 - HYDRO-PNEUMATIC BOOSTER PUMP	14F	SPARE BREAKER	17B	BLANK	22K	BLANK
3C	11M14506 - CONVEYOR 6	11DL	11P99301 - HOT WATER RECIRCULATION PUMP 1	14M	BLANK	17D	SPARE STARTER	22M	11M20102 - CENTRATE TANK 2 MIXER
3M	10P31102 - DCF SLUDGE PUMP 2	11DR	11P99302 - HOT WATER RECIRCULATION PUMP 2	15B	BLANK	17F	11P92502 - POLYMER RECIRCULATION PUMP 2		
4B	11M99802 - DIRECT FIRED MAKE-UP AIR UNIT	11M	11P31102 - DIGESTER FEED PUMP 2	15DL	11FCV92102 - SILO 2 FEED HI LEVEL SHUT OFF	17M	11P92602 - NEAT POLYMER METERING PUMP 2		
4E	11M14504 - CONVEYOR 2	12B	11M14504 - CONVEYOR 4	15DR	11M92092 - DRY POLYMER VACUM	18B	BLANK		MPO 01519 IT.002-FVC
4M	11P11202 - VFD DISCHARGE PUMP 2	12D	22M14508 - CONVEYOR 8	15FL	11FV92222 - POLY MIXING TANK 2 OUTLET VALVE	18E	11F99804 - BLOWER/AIR COMP RM EX FAN		SEPT.00 H. Bus 1200A 65
5BL	11FCV20101 - CENTRATE GRAVITY DRAIN VALVE	12F	11M31202 - DIGESTER FEED TANK 2 MIXER	15FR	SPARE BREAKER	18M	11P92902 - POLYMER METERING PUMP 2		480V 3PH 3W 60Hz
5BR	SPARE BREAKER	12H	11M30102 - WAS/CHEM STORAGE TANK BLOWER 2	15HL	11FV92401 - LIQUID POLYMER UNLOADING VALVE	19B	11XFRM1003 - TRANSFORMER SOLIDS LAB		SECT 1, 3-6, 8, 10-14 300A
5E	SPARE BREAKER	12K	10M10401 - DIG SLUDGE STORAGE OIL PUMP MIXER	15HR	11M99808 - AIR CONDITIONING UNIT SOLIDS LAB	19E	SPARE BREAKER		SECT 17, 18-22 300A
5M	11P11302 - VFA RETURN PUMP 2	12M	SPARE BREAKER	15KL	11FV92821 - POLYMER AGING TANK 2 INLET VALVE	19M	11P92904 - POLYMER METERING PUMP 4		SECT 7&9 NONE
				15KR	SPARE BREAKER				SECT 2 1200A
				15ML	11M99809 - DUCT HEATER SOLIDS LAB				SECT 15-16 600A
				15MR	11M99087 - GAS FIRED FURNACE SOLIDS LAB				

POWER PANEL 11PP10001			
1	LIGHTS - LOWER BASEMENT EXIT & EMERGENCY	2	UNSWITCHED LIGHTS - LOWER BASEMENT
3	LIGHTS - UPPER BASEMENT EXIT & EMERGENCY	4	UNSWITCHED LIGHTS - UPPER BASEMENT
5	LIGHTS - MAIN FLOOR EXIT & EMERGENCY	6	UNSWITCHED LIGHTS - MAIN FLOOR CENTRIFUGE ROOM
7	LIGHTS - SECOND FLOOR EXIT & EMERGENCY	8	UNSWITCHED LIGHTS - SECOND FLOOR CENTRIFUGE ROOM
9	ROOF CONVENIENCE OUTLETS	10	UNSWITCHED LIGHTS - ROOF
11	NPW SLUDGE STORAGE MIXER HEAT TRACE 10M10401	12	UNSWITCHED LIGHTS - MAIN FLOOR POLYMER ROOM
13	SLUDGE STORAGE MIXER OIL PUMP HEATER	14	UNSWITCHED LIGHTS - SECOND FLOOR MIXING ROOM
15	SPARE	16	UNSWITCHED LIGHTS - THICKENER TUNNEL
17	SPARE	18	SPARE
19	SPARE	20	SPARE
21	SPARE	22	SPARE
23	SPARE	24	SPARE
25	SPARE	26	SPARE
27	SPARE	28	SPARE
29	SPARE	30	SPARE
31	SPARE	32	SPARE
33	SPARE	34	SPARE
35	SPARE	36	POLYMER POWER PANEL 11PP10002
37	SPARE	38	
39	SPARE	40	
41	SPARE	42	LIGHTING CONTROL PANEL 11LP10001

Voltage LG: 120
Voltage LL: 240
Bus Rating: 200A
Main Breaker: 200A
Phase/Wire: 3PH/3W
Enclosure: NEMA 1

1	FERRIC METERING PUMP 1	2	DRY POLYMER SILO 1 FILL SHUT OFF
3	FERRIC METERING PUMP 2	4	DRY POLYMER SILO 2 FILL SHUT OFF
5	FERRIC FILL VALVE	6	SPARE
7	FERRIC PUMP 1 INLET VALVE	8	EXHAUST FAN ABOVE DRY POLYMER SILOS
9	FERRIC PUMP 2 INLET VALVE	10	SPARE
11	FERRIC TANK 1 LEVEL	12	SPARE
13	FERRIC TANK 2 LEVEL	14	SPARE
15	FERRIC TANK 2 LEVEL	16	SPARE
17	FERRIC TANK 4 LEVEL	18	SPARE
19	FERRIC UNLOADING PANEL	20	SPARE
21	DC 4 HOT WATER CIP CONTROL VALVE	22	SPARE
23	DC 4 NPW WATER CIP CONTROL VALVE	24	SPARE
25	DC 4 CONVEYOR FLUSH VALVE	26	SPARE
27	DC 5 HOT WATER CIP CONTROL VALVE	28	SPARE
29	DC 5 NPW WATER CIP CONTROL VALVE	30	SPARE
31	DC 5 CONVEYOR FLUSH VALVE	32	SPARE
33	FERRIC FEED CONTROL VALVE 3	34	SPARE
35	COMPRESSOR AIR DRYER	36	SPARE
37	SPARE	38	SPARE
39	SPARE	40	SPARE
41	SPARE	42	SPARE

LIGHTING PANEL 11LP10001			
1	LIGHTS - LOWER BASEMENT FLUORESCENTS	2	LIGHTS - MAIN FLOOR CENTRIFUGE ROOM HPS
3	LIGHTS - LOWER BASEMENT FLUORESCENTS	4	LIGHTS - MAIN FLOOR CENTRIFUGE ROOM HPS
5	LIGHTS - UPPER BASEMENT FLUORESCENTS	6	LIGHTS - MAIN FLOOR POLYMER ROOM HPS
7	LIGHTS - UPPER BASEMENT FLUORESCENTS	8	LIGHTS - MAIN FLOOR POLYMER ROOM HPS
9	LIGHTS - MAIN FLOOR FLUORESCENTS	10	LIGHTS - SECOND FLOOR POLMER MIXING ROOM HPS
11	LIGHTS - MAIN FLOOR FLUORESCENTS	12	LIGHTS - SECOND FLOOR POLMER MIXING ROOM HPS
13	LIGHTS - SECOND FLOOR FLUORESCENTS	14	OUTSIDE LIGHTS
15	LIGHTS - SECOND FLOOR FLUORESCENTS	16	LIGHTS - SECOND FLOOR POLYMER MIXING ROOM HPS
17	LIGHTS - ROOF FLUORESCENTS & EXTERIOR LIGHTS	18	THICKENER AREA POLE LIGHTS
19	SPARE	20	WASTE BAS BURNER AREA POLE LIGHTS
21	LIGHTS - MAIN FLOOR POLYMER AREA FLUORESCENTS	22	SPARE
23	SPARE	24	SPARE
25	LIGHTS - THICKENER AREA FLUORESCENTS	26	SPARE
27	SPARE	28	SPARE
29	SPARE	30	SPARE
31	SPARE	32	SPARE
33	SPARE	34	SPARE
35	SPARE	36	SPARE
37	SPARE	38	SPARE
39	LIGHTS UPPER BASEMENT	40	LIGHTS LOWER BASEMENT
41	LIGHTS & RECEPTACLES LOWER BASEMENT TUNNEL	42	LIGHTS LOWER BASEMENT

Voltage LG: 120
Voltage LL: 240
Bus Rating: 100A
Main Breaker: 100A
Phase/Wire: 1PH/3W
Enclosure: NEMA 1

11PP10002	
	11P96301
	11FV92101
	11P96302
	11FV92102
	11FV96001
	11FV96201
	11F99801
	11FV96202
	11LE/LIT96101
	11LE/LIT96102
	11LE/LIT96103
	11LE/LIT96104
	11FCV40201
	11FCV40202
	11FV40401
	11FCV50201
	11FCV50202
	11FV50401
	11FV96403
	11M92091

20MCC99101

EATON CUTLER-HAMMER
FREEDON SERIES 2100
MOTOR CONTROL CENTER

PO4910 IT.5 -FCV
SEPT. 92 H. BUS 600 A
480V 3PH 4W 60 HZ

Location: Digester Complex Two

Bucket NO.

1C DIGESTER CONTROL BUILDING AHU

1F ELECTRICAL ROOM AHU

1H SPARE

1K DIG 2 HOT WATER PUMP

1M BLANK

2B HOT WATER PRIMARY LOOP PUMP 1

2D BOILER 1 RECIRCULATION PUMP 1

2F HOT WATER HEX 1 RECIRCULATION PUMP

2H DIG 2 HOT WATER PUMP

2K BLANK

2M SLUDGE RECIRCULATION PUMP 1

2B_L DIGESTED SLUDGE PUMP 1

2B_R AUTOMATIC TRANSFER SWITCH

DIGESTER COMPLEX 2 POWER PANEL

1 UPPER LEVEL UNSWITCHED LIGHTING

2 LOWER LEVEL UNSWITCHED LIGHTING

3 ELECTRICAL ROOM UNSWITCHED LIGHTING

4 PENTHOUSE UNSWITCHED LIGHTING

5 LIGHTING CONTROL PANEL

6 ELECTRICAL ROOM RECEPTACLES

7 LIGHTING CONTROL PANEL

8 OUTDOORS AND ROOF RECEPTACLES

9 UPPER LEVEL EXIT & EMERGENCY LIGHTING

10 LOWER LEVEL EXIT & EMERGENCY LIGHTING

11 LOWER LEVEL RECEPTACLES

12 UPPER LEVEL RECEPTACLES

13 DIGESTER 4 MIXER OIL HEATER

14 SPARE

15 DIGESTER SLUDGE HOLDING TANK 2 MIXER OIL HEATER

16 SPARE

17 HVAC LCP CONTROL PANEL

18 SPARE

19 WASTE GAS BURNER

20 SPARE

21 SPARE

22 RESTROOM EXHAUST FAN

23 AIR DRYER

24 GAS DETECTION ANALYZER

25 COMBUST. AIR SUPPLY FAN

26 DIGESTER 4 HEAT TRACE

27 RESTROOM HOT WATER TANK

28 DIGESTER HOLDING TANK 2 HEAT TRACE

29 RESTROOM HOT WATER TANK

30 RECEPTACLES UPPER LEVEL BOILER ROOM

- 31 SPARE
- 32 SPARE
- 33 SPARE
- 34 SPARE
- 35 SPARE
- 36 SPARE
- 37 SPACE
- 38 SPACE
- 39 SPACE
- 40 SPACE
- 41 SPACE
- 42 SPACE

DIGESTER COMPLEX 2 POWER PANEL

2B_R **AUTOMATIC TRANSFER SWITCH**

3D_L HOT WATER BOILER 1

3D_R **AUTOMATIC TRANSFER SWITCH**

DIGESTER COMPLEX TWO INSTRUMENT PANEL

- 1 PLC LOCAL CONTROL PANEL
- 2 20FIT10403
- 3 PLC LOCAL CONTROL PANEL
- 4 CONTROL BUILDING COMPUTER RECEPTACLE
- 5 WASTE GAS BURNER FLOW METER
- 6 DIGESTER 4 GAS FLOW METER
- 7 DIGESTED SLUDGE HOLDING TANK 2 FLOW METER
- 8 SPARE
- 9 DIGESTED SLUDGE FLOW METER
- 10 SPARE
- 11 DIGESTED SLUDGE PUMP 1 SUCTION FLOW SWITCH
- 12 DIGESTED SLUDGE PUMP 2 SUCTION FLOW SWITCH
- 13 MOD HEAT TIMER FOR BOILERS
- 14 FOR FUTURE FARE ALARM CONTROL PANEL
- 15 HEX 1 TEMPERATURE
- 16 DIGESTED SLUDGE PUMP LEVEL
- 17 HEX 2 TEMPERATURE
- 18 SPARE
- 19 SPARE
- 20 SPARE
- 21 SPARE
- 22 SPARE
- 23 SPACE
- 24 SPARE
- 25 SPACE
- 26 SPARE
- 27 SPACE
- 28 SPARE
- 29 SPACE
- 30 SPARE

DIGESTER COMPLEX TWO INSTRUMENT PANEL

3D_R **AUTOMATIC TRANSFER SWITCH**

3F_L ELECTRICAL ROOM CONDENSING UNIT

3F_R CONTROL BUILDING SOUTH ROLLUP DOOR

3H _L	DIGESTER FEED SLUDGE GRINDER 1
3H _R	WELDING RECEPTALCE
3K _L	SUMP PUMP CONTROL PANEL FEED
3K _R	SPARE
3M _L	DIGESTER COMPLEX 2 ROAD GATE OPERATOR
3M _R	SPARE
4C	MAIN -1 TVSS
4E	DIGESTER 4 MIXER OIL PUMP
4M	DIGESTER 4 MIXER OIL PUMP
5B	MAIN - 1 METERING
5M	MAIN BREAKER NO. 1
6G	TIE BREAKER

[Back to the Drawing](#)

SHORT-CIRCUIT-CURRENT
RATING 65,000 AMPS RMS SYM
600 VOLTS MAXIMUM

20F99804
20F99803

750P0202

20P20101
20P20201
20P20301
750P0201

20P10201
20P10501
20ATS99102
20PP99101

20LP99101

20LP99101

20LCP99810

20LCP30201

20F99806
20T99401
20AIT99101
20F99815

20PP99101
20ATS99102

20M22101

20ATS99101

20IP99101

20LCP99101

20FIT10403

20LCP99101

20FIT30201

20FIT10401

20FIT10402

20FIT10501

20FSL10501

20FSL10502

20TIT20301

20LIT10601

20TIT20302

20IP99101

20ATS99101

20F99801

20M99701

20M10101

20M99704

20P10401
20M10401

20MCC99102

EATON CUTLER-HAMMER
FREEDON SERIES 2100
MOTOR CONTROL CENTER

PO4910 IT.5 -FCV
SEPT. 92 H. BUS 600 A
480V 3PH 4W 60 HZ

Location: Digester Complex Two

Bucket NO.

7B MAIN 2 METERING
7M MAIN BREAKER NO. 2
8C MAIN 2 TVSS
8E DIGESTER SLUDGE HOLDING TANK 2 MIXER OIL PUMP
8M DIGESTER SLUDGE HOLDING TANK 2 MIXER
9B_L DIGESTED SLUDGE PUMP 2

9B_R AUTOMATIC TRANSFER SWITCH

DIGESTER COMPLEX 2 POWER PANEL

- 1 UPPER LEVEL UNSWITCHED LIGHTING
- 2 LOWER LEVEL UNSWITCHED LIGHTING
- 3 ELECTRICAL ROOM UNSWITCHED LIGHTING
- 4 PENTHOUSE UNSWITCHED LIGHTING
- 5 LIGHTING CONTROL PANEL
- 6 ELECTRICAL ROOM RECEPTACLES
- 7 LIGHTING CONTROL PANEL**
- 8 OUTDOORS AND ROOF RECEPTACLES
- 9 UPPER LEVEL EXIT & EMERGENCY LIGHTING
- 10 LOWER LEVEL EXIT & EMERGENCY LIGHTING
- 11 LOWER LEVEL RECEPTACLES
- 12 UPPER LEVEL RECEPTACLES
- 13 DIGESTER 4 MIXER OIL HEATER
- 14 SPARE
- 15 DIGESTER SLUDGE HOLDING TANK 2 MIXER OIL HEATER
- 16 SPARE
- 17 HVAC LCP CONTROL PANEL
- 18 SPARE
- 19 WASTE GAS BURNER
- 20 SPARE
- 21 SPARE
- 22 RESTROOM EXHAUST FAN
- 23 AIR DRYER
- 24 GAS DETECTION ANALYZER
- 25 COMBUST. AIR SUPPLY FAN
- 26 DIGESTER 4 HEAT TRACE
- 27 RESTROOM HOT WATER TANK
- 28 DIGESTER HOLDING TANK 2 HEAT TRACE
- 29 RESTROOM HOT WATER TANK
- 30 RECEPTACLES UPPER LEVEL BOILER ROOM
- 31 SPARE
- 32 SPARE
- 33 SPARE
- 34 SPARE
- 35 SPARE
- 36 SPARE

- 37 SPACE
- 38 SPACE
- 39 SPACE
- 40 SPACE
- 41 SPACE
- 42 SPACE

**DIGESTER COMPLEX 2 POWER PANEL
AUTOMATIC TRANSFER SWITCH**

9B_R

HOT WATER BOILER 2

9D_L

AUTOMATIC TRANSFER SWITCH

9D_R

DIGESTER COMPLEX TWO INSTRUMENT PANEL

- 1 PLC LOCAL CONTROL PANEL
- 2 20FIT10403
- 3 PLC LOCAL CONTROL PANEL
- 4 CONTROL BUILDING COMPUTER RECEPTACLE
- 5 WASTE GAS BURNER FLOW METER
- 6 DIGESTER 4 GAS FLOW METER
- 7 DIGESTED SLUDGE HOLDING TANK 2 FLOW METER
- 8 SPARE
- 9 DIGESTED SLUDGE FLOW METER
- 10 SPARE
- 11 DIGESTED SLUDGE PUMP 1 SUCTION FLOW SWITCH
- 12 DIGESTED SLUDGE PUMP 2 SUCTION FLOW SWITCH
- 13 MOD HEAT TIMER FOR BOILERS
- 14 FOR FUTURE FARE ALARM CONTROL PANEL
- 15 HEX 1 TEMPERATURE
- 16 DIGESTED SLUDGE PUMP LEVEL
- 17 HEX 2 TEMPERATURE
- 18 SPARE
- 19 SPARE
- 20 SPARE
- 21 SPARE
- 22 SPARE
- 23 SPACE
- 24 SPARE
- 25 SPACE
- 26 SPARE
- 27 SPACE
- 28 SPARE
- 29 SPACE
- 30 SPARE

DIGESTER COMPLEX TWO INSTRUMENT PANEL

AUTOMATIC TRANSFER SWITCH

9D_R

CONTROL BUILDING HOIST

9F_L

CONTROL BUILDING NORTH ROLLUP DOOR

9F_R

DIGESTER FEED SLUDGE GRINDER 2

9H_L

DIR COMPRESSOR

9H_R

SLUDGE RECIRCULATION PUMP2

9K

BLANK

9M

PRIMARY HEAT LOOP PUMP 2

10B

10D	BOILER 2 RECIRCULATION PUMP 2
10F	BOILER 2 RECIRCULATION PUMP 2
10J	PHASE FOUR DEWATERING PUMP #1 (TEMPORARY)
10M	PHASE FOUR TEMPORARY CONSTRUCTION POWER
11C	DIGESTER CONTROL BUILDING EXHAUST FAN 2
11F	DIGESTER CONTROL BUILDING EXHAUST FAN 1
11H	BUILDING HEAT RECIRCULATION PUMP
11K	BLANK
11M	BLANK

[Back to the Drawing](#)

SHORT-CIRCUIT-CURRENT
RATING 65,000 AMPS RMS SYM
600 VOLTS MAXIMUM

20P10402
20M10402
20P10502
20ATS99102
20PP99101

20LP99101
20LP99101

20LCP99810
20LCP30201

20F99806
20T99401
20AIT99101
20F99815

20PP99101
20ATS99102

20ATS99101
20IP99101
20LCP99101
20FIT10403
20LCP99101

20FIT30201
20FIT10401
20FIT10402

20FIT10501

20FSL10501
20FSL10502

20TIT20301
20LIT10601
20TIT20302

20IP99101
20ATS99101
20M99703
20M99702
20M10102
20LCP99401
20P10202

20P20102

20P20202
20P20302

20F99802
20F99805

11001 EATON CUTLER-HAMMER
FREEDON SERIES 2100
MOTOR CONTROL CENTER

PO49100 IT.7 -FCV
AUG. 92 H. BUS 1200 A
480V 3PH 4W 60 HZ

Location: Slds Thickening

Bucket NO.

1M MAIN BREAKER
2D THICKENING CENTRIFUGE TC-11001
2F_L SPARE
2F_R GRAVITY THICKENER SCUM PUMP FEEDER
2H TPS PUMP 2
2K TPS PUMP 3
2M THICKENING SLUDGE PUMP TSP-11001
3D THICKENING CENTRIFUGE TC-11003
3F_L SPARE
3F_R SPARE
3H BRIDGE CRANE BC-11001
3K SPARE
3M SPARE
4B SPARE
4C BLANK
4H **INSTRUMENT PANELBOARD IP-11003**
1 MISSING SCHEDULE
2 MISSING SCHEDULE
3 MISSING SCHEDULE
4 MISSING SCHEDULE
5 MISSING SCHEDULE
6 MISSING SCHEDULE
7 MISSING SCHEDULE
8 MISSING SCHEDULE
9 MISSING SCHEDULE
10 MISSING SCHEDULE
11 MISSING SCHEDULE
12 MISSING SCHEDULE
13 MISSING SCHEDULE
14 MISSING SCHEDULE
15 MISSING SCHEDULE
16 MISSING SCHEDULE
17 MISSING SCHEDULE
18 MISSING SCHEDULE
4H **INSTRUMENT PANELBOARD IP-11003**
2K_L
2K_R
4M INSTRUMENT TRANSFORMER
5B SPARE
5D SPARE
5F POLYMER MIXER PM-11001
5M BLANK

[Back to the Drawing](#)

SECT 1 - NONE; SECT 2-3 - 600A
SEC 4-5 - 300A; NEUTRAL 600A
MAIN SPB - 800A

TAG NO.

TC-11001

TSP-11001
TC-11002

BC-11001

PM-11001

11002 EATON CUTLER-HAMMER
FREEDON SERIES 2100
MOTOR CONTROL CENTER

PO49100 IT.7 -FCV
AUG. 92 H. BUS 1200 A
480V 3PH 4W 60 HZ

Location: Slds Thickening

Bucket NO.

- 1M MAIN BREAKER
- 2D THICKENING CENTRIFUGE TC-11002
- 2F **POWER PANELBOARD PP-11006**
 - 1 ELECTRICAL ROOM RECEPTACLES
 - 2 EXTERIOR LIGHTING
 - 3 GROUND FLOOR RECEPTACLES
 - 4 GROUND FLOOR EMERGENCY AND EXIT LIGHTING
 - 5 SECOND FLOOR RECEPTACLES
 - 6 SECOND FLOOR EMERGENCY AND EXIT LIGHTING
 - 7 CONTROL ROOM RECEPTACLES
 - 8 CONTROL ROOM RECEPTACLES
 - 9 FLOW METER TCFP 11003
 - 10 POLYMER RECEPTACLES
 - 11 SPARE
 - 12 AIR HANDLING UNIT 11002
 - 13 SPARE
 - 14 AIR HANDLING UNIT 11002
 - 15 AIR CONDITIONING UNIT 11002
 - 16 AIR HANDLING UNIT 11002
 - 17 AIR CONDITIONING UNIT 11002
 - 18 AIR HANDLING UNIT 11002
 - 19 AIR CONDITIONING UNIT 11002
 - 20
 - 21 AIR CONDITIONING UNIT 11002
 - 22 SPARE
 - 23 SPARE
 - 24 SCUM SITE LIGHTS
 - 25 SPARE
 - 26 CONTROL ROOM RECEPTACLES
 - 27 LIT-001 FM-1, FM-2
 - 28 SOLIDS BUILDING ODOR CONTROL HYPO PUMP 11P93301
 - 29 LIT-002 FM-5
 - 30 SOLIDS BUILDING ODOR CONTROL pH ANALYZER 11AIT93401
- 4H **POWER PANELBOARD PP-11006**
- 2H TPS PUMP 1
- 2K THICKENING SLUDGE PUMP TSP-11002
- 2M ROLLUP DOOR RD-11001
- 3B PRIMARY SLUDGE GRINDER
- 3D PRESSURIZATION UNIT PU-11001
- 3F MAKE-UP AIR UNIT
- 3H AIR COOLED CONDENSING UNIT
- 3K **LIGHTING PANELBOARD LP-11005**
 - 1 NO SCHEDULE
 - 2 NO SCHEDULE

3 NO SCHEDULE

4 NO SCHEDULE

3K **LIGHTING PANELBOARD LP-11005**

3M SPARE

4B SPARE

4D NPW BOOSER PUMP

4G THICKENER DRIVE 1

4K THICKENER DRIVE 2

4M THICKENER DRIVE 3

[Back to the Drawing](#)

SECT 1 - NONE; SECT 2-3 - 600A
SEC 4-5 - 300A; NEUTRAL 600A
MAIN SPB - 800A



TAG NO.

TC-11002

11P93301

11AIT93401

TSP-11002

RD-11001

SG-11001

PU-11001

MU-11001

ACC-11001

NPWP-11001

11231 EATON CUTLER-HAMMER
FREEDON SERIES 2100
MOTOR CONTROL CENTER

PO4910 IT.5 -FCV
SEPT. 92 H. BUS 600 A
480V 3PH 4W 60 HZ

Location: Solids Loading

Bucket NO.

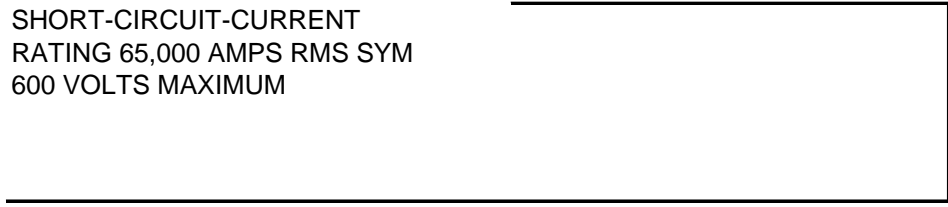
- 1C BLANK
- 1E_L SPARE
- 1E_R SILO DISCHARGE VALVE KGV-11201, KGV-11203
- 1G_L SPARE
- 1G_R SPARE
- 1M MAIN BREAKER
- 2B_L SLURRY DRAIN VALVE PV-11101
- 2B_R LIVE BIN UNLOADERS LBU-11201, LBU-11203, LBU-11205, AND LBU-11207
- 2D **LIGHTING PANEL BOARD LP-11235**
 - 1
 - 2
 - 3
 - 4
 - 5
 - 6
 - 7
 - 8
 - 9
 - 10
 - 11
 - 12
 - 13
 - 14
 - 15
 - 16
 - 17
 - 18
- 2D **LIGHTING PANEL BOARD LP-11235**
- 2H **INSTRUMENT PANEL PP-11233**
 - 1 LSHH 11211
 - 2 CP11240
 - 3 LSHH 11212
 - 4 **CP11240**
 - COOLING FAN
 - MAIN 24VDC POWER SUPPLY
 - SPARE
 - FIELD I/O
 - PANEL LIGHTS AND RECEPTACLES
 - BACKUP 24VDC POWER SUPPLY
 - I/O PLC 5 BASE 5
 - CONTROL PANEL INSTRUMENTS
- 4 **CP11240**

- 5 ENTRANCE LOOP
- 6 WT 11201
- 7 EXIT LOOP
- 8 WT 11202

- 2H **INSTRUMENT PANEL PP-11233**
- 2K_L INSTRUMENT TRANSFORMER BREAKER
- 2K_R INSTRUMENT PANELBOARD BREAKER
- 2M INST. TRANSFORMER 12004

[Back to the Drawing](#)

SHORT-CIRCUIT-CURRENT
RATING 65,000 AMPS RMS SYM
600 VOLTS MAXIMUM



11232 EATON CUTLER-HAMMER
FREEDON SERIES 2100
MOTOR CONTROL CENTER

PO4910 IT.5 -FCV
SEPT. 92 H. BUS 600 A
480V 3PH 4W 60 HZ

Location: Solids Loading

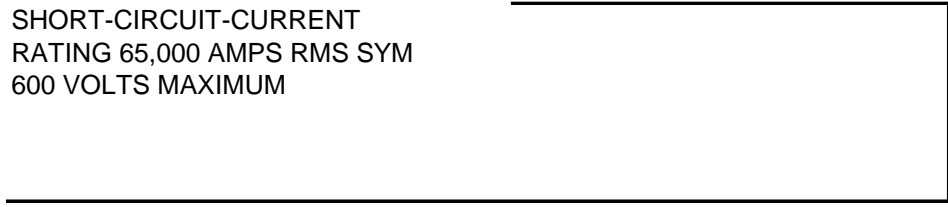
Bucket NO.

- 1C BLANK
- 1E PRESSURIZATION UNITON PU-11201
- 1G SPARE
- 1M MAIN BREAKER
- 2B_L LIVE BIN UNLOADERS LBU-11202, LBU-11204, LBU-11206, AND LBU-11208
- 2B_R SPARE
- 2DL SILO DISCHARGE VALVES KGV-11202, KGV-11204
- 2D_R **POWER PANEL PP-11236**
 - 1 BATHROOM GFCI RECEPTACLE
 - 2 SITE LIGHT CONTROL
 - 3 MCC ROOM RECPETACLES
 - 4 EMERGENCY LIGHTS
 - 5 ACC-11201
 - 6 AHU-11201
 - 7 ACC-11201
 - 8 AHU-11201
 - 9 BATHROOM WATER HEATER
 - 10 SPARE
 - 11 BATHROOM WATER HEATER
 - 12 SPARE
 - 13 SPARE
 - 14 SPARE
 - 15 CONTROLS MV-11201
 - 16 SPRINKLER CONTROL BOX
 - 17 HEAT TRACE EAST SILO
 - 18 SPACE
 - 19 HEAT TRACE GFCI WEST SILO
 - 20 SPACE
 - 21 SPACE
 - 22 SPACE
 - 23 SPACE
 - 24 SPACE
 - 25 SPACE
 - 26 SPACE
 - 27 SPACE
 - 28 SPACE
 - 29 SPACE
 - 30 SPACE
 - 31 SPACE
 - 32 SPACE
- 2D_R **POWER PANEL PP-11236**
- 2F_L JIB CRANE

2F _R	HIGH PRESSURE WASHER CONTROL PANEL
2H _L	ROLLUP DOOR RD-11201
2H _R	ROLLUP DOOR RD-11202
2K	MAKE-UP AIR UNIT MU-11201
2M	ROLLUP DOOR RD-11001
3B	BLANK
3G	SPARE
3M	SPARE

[Back to the Drawing](#)

SHORT-CIRCUIT-CURRENT
RATING 65,000 AMPS RMS SYM
600 VOLTS MAXIMUM



12001 EATON CUTLER-HAMMER
FREEDON SERIES 2100
MOTOR CONTROL CENTER

PO4910 IT.5 -FCV
SEPT. 92 H. BUS 600 A
480V 3PH 4W 60 HZ

Location: Chem Elec Room

Bucket NO.

- 1M MAIN BREAKER
- 2B ELEVATOR CONTROL PANEL ELV-12001
- 2D LIME SLAKER NO. 2 CONTROL PANEL - CP-12016
- 2F MCC-12011
- 2H LIME BIN FILTER - LBF-12003
- 2K LIME BIN FILTER - LBF-12002
- 2M LIME SLAKER NO. 3 CONTROL PANEL - CP-12017
- 3B BISULFITE RECIRCULATION PUMP - BCP-12001
- 3D HIGH PRESSURE AIR COMPRESSOR - AC-12001
- 3F ELECTRICAL UNIT HEATER - EUH-12004
- 3H ELECTRICAL UNIT HEATER - EUH-12005
- 3K EXHAUST FAN EF-12001
- 3M EXHAUST FAN EF-12002
- 4B EXHAUST FAN EF-12011
- 4D SPARE STARTER
- 4H DILUTION WATER PUMP DWP-12001
- 4K BASEMENT DRAIN PUMP DP-12001
- 4M HYPOCHLORITE METERING PUMP HMP-12001
- 5B ALUM METERING PUMP 12M10108 / POLY METERING PUMP 12M12019
- 5F MAKEUP AIR UNIT MU-12002
- 5K **POWER PANEL BOARD PP-12006**
 - 1 LIME BLDG RECEPT.
 - 2 DRIVEWAY RECEPT.
 - 3 LIME BLDG RECEPT.
 - 4 ALUM BLDG EAST RECEPT.
 - 5 LIME BLDG RECEPT.
 - 6 ALUM BLDG NORTH RECEPT EXIT NIGHT LIGHTS
 - 7 POLYMER RECEPT.
 - 8 ALUM BLDG WEST RECEPT.
 - 9 POLYMER/ELECT. ROOM RECEPT.
 - 10 ALUM BLDG RECEPT.
 - 11 LUNCH ROOM RECEPT.
 - 12 LUNCH ROOM RECEPT.
 - 13 LUNCH ROOM RECEPT.
 - 14 LUNCH ROOM RECEPT.
 - 15 LUNCH ROOM RECEPT.
 - 16 REFRIGERATOR
 - 17 LUNCH ROOM RECEPT.
 - 18 CHEM. CAUSTIC PUMP #1 810P4101
 - 19 BISULFITE RECEPT.
 - 20 COOKTOP
 - 21 WATER COOLER
 - 22 COOKTOP
 - 23 LAB PLUG STRIP

- 24 CONTROL ROOM PLUG STRIP
- 25 LAB PLUG STRIP
- 26 CONTROL ROOM PLUG STRIP
- 27 EXT. BLDG FAÇADE LIGHTS
- 28 CONTROL ROOM PLUG STRIP
- 29 WALKWAY LIGHTS
- 30 PRI CLAR CAUSTIC PUMP #1 810P4102
- 31 DRIVEWAY LIGHTS
- 32 PRI CLAR HYPO PUMP #1 810P4105
- 33 SPARE
- 34 SPARE
- 35 EFF. DECHLOR BISULFITE PUMP #2 12P4032
- 36 DRVIEWAY FLOODLIGHTS
- 37 LC-12030
- 38 EXCESS FLOW DECHOR BISULFITE PUMP #2
- 39 LR HWH
- 40 DRIVEWAY RECEPT.
- 41 SPARE
- 42 HEAT TAPE FOR BV-12061

5K **POWER PANEL BOARD PP-12006**

5M BLANK

6B BLANK

6H **INSTRUMENT PANEL BOARD IP-12003**

- 1 LIT-12051 (POLYMER)
- 2 LIT-12010 (LIME)
- 3 LIT-12052 (POLYMER)
- 4 LIT-12011 (LIME)
- 5 LIT-12053 (POLYMER)
- 6 LIT-12012 (LIME)
- 7 LIT-12001, LIT-12002, LIT-12003 (ALUM)
- 8 LIT-12013 (LIME)
- 9 PBS-12001 (POLYMER)
- 10 LIT-12201 (BISULFITE)
- 11 PBS-12002 (POLYMER)
- 12 LIT-12202 (BISULFITE)
- 13 LIT-12004, LIT-12005, LIT-12006 (ALUM)
- 14 FI-12251 (BISULFITE)
- 15 VFD-12041 HYPO LOOP PUMP #1
- 16 SPARE
- 17 VFD-12042 HYPO LOOP PUMP #2
- 18 LIT-12041, LIT-12042, LIT-12043 (HYPO)
- 19 LIT-12007, LIT-12008, 12009 (ALUM)
- 20 ODOR CONTROL PANEL
- 21 LEAK DETECT. BISULFITE WEST
- 22 LSL12673, LCP12681
- 23 LEAK DETECT. BISULFITE EAST
- 24 LIT-12404 (HYPO)
- 25 FIT-12650 (DILUTION)
- 26 LIT-12405 (HYPO)
- 27 FIT-12640 (NPW)
- 28/30 CP-1201B
- 29 LIT-12601

28/30 CP-1201B
31 LIT-12602
32 SPARE
33 LIT-12603
34 SPARE
35 LIT-12604 POLY STORAGE
36 FIRE ALARM CP
37 LIT-12605 ALUM STORAGE
38 CTRL ROOM COMPUTER OUTLETS
39 LIT-12606 HYPO STORAGE
40 CTRL ROOM COMPUTER OUTLETS
41 SPARE
42 SPARE

6H **INSTRUMENT PANEL BOARD IP-12003**
6K_L INSTRUMENT TRANSFORMER BREAKER - XFMR-12004
6K_R INSTRUMENT TRANSFORMER BREAKER - XFMR-12003
6M INST. TRANSFORMER 12004
7B POLY MIXER PM-12001
7D POLY MIXER PM-12002
7F POLY TRANSFER PUMP PTP-12001
7J SPARE STARTER
7K BLANK
7M SPARE STARTER
8B EXHAUST FAN EF-12006
8D EXHAUST FAN EF-12007
8F EXHAUST FAN EF-12010
8H EXHAUST FAN EF-12016
8K MAKEUP AIR UNIT MU-12004
8M VACUUM PUMP VP-12001
9B MAKEUP AIR UNIT MU-12003
9C BLANK
9H **INSTRUMENT PANELBOARD IP-12043**

1 CP-12241 (BV-12011)
2 BV-12025
3 CP-12624 (BV-12024)
4 BV-12001
5 CP-12624 (BV-12023)
6 BV-12002
7 CP-12622 (BV-12022)
8 BV-12003
9 CP-12621 (BV-12021)
10 ODOR CONTROLLERS 810AIC4103, 810AIC4104
11 BV-12051
12 BV-12032
13 CHEM BLDG ODOR SCRUBBER LPA INLET
14 BV-12042
15 DRAIN PUMP 12001, 12002
16 BV-12043
17 GAS LEAK DET. HYPO #1
18 SPARE
19 GAS LEAK DET. HYPO #2

20 SPARE
21 BFV-12001
22 SPARE
23 BFV-12031
24 SPARE
25 SPARE
26 SPARE
27 SPARE
28 SPARE
29 SPARE
30 SPARE

9H **INSTRUMENT PANELBOARD IP-12043**
9K_L INSTRUMENT TRANSFORMER BREAKER XFMR-12044
9K_R INSTRUMENT PANELBOARD BREAKER IP-12043
9M INST. TRANSFORMER IP-12044
10E ALUM METERING PUMP 12M10108
10G LOAD REACTORS FOR ALUM METERING PUMP AND POLY METERING PUMP
10M POLY METERING PUMP 12M102109

[Back to the Drawing](#)



TAG NO.

ELV-12001
CP-12016

LBF-12003
LBF-12002
CP-12017
BCP-12001
AC-12001
EUH-12004
EUH-12005
EF-12001
EF-12002
EF-12011

DWP-12001
DP-12001
HMP-12001
12M10108 / 12M12019
MU-12002

LIT-12051
LIT-12010
LIT-12052
LIT-12011
LIT-12053
LIT-12012
LIT-12001, LIT-12002, LIT-12003
LIT-12013
PBS-12001
LIT-12201
PBS-12002
LIT-12202
LIT-12004, LIT-12005, LIT-12006
FI-12251
VFD-12041

VFD-12042
LIT-12041, LIT-12042, LIT-12043
LIT-12007, LIT-12008, LIT-12009

LSL12673, LCP12681

LIT-12404
FIT-12650
LIT-12405
FIT-12640
CP-1201B
LIT-12601

CP-1201B
LIT-12602

LIT-12603

LIT-12604

LIT-12605

LIT-12606

XFMR-12004

XFMR-12003

PM-12001

PM-12002

PTP-12001

EF-12006

EF-12007

EF-12010

EF-12016

MU-12004

VP-12001

MU-12003

CP-12241 (BV-12011)

BV-12025

CP-12624 (BV-12024)

BV-12001

CP-12624 (BV-12023)

BV-12002

CP-12622 (BV-12022)

BV-12003

CP-12621 (BV-12021)

BV-12051

BV-12032

BFV-12061

BV-12042

DP-12001, DP-12002

BV-12043

BFV-12001

BFV-12031

XFMR-12044

IP-12044

12M10108 / 12M12019

12M102109

12002	EATON CUTLER-HAMMER FREEDON SERIES 2100 MOTOR CONTROL CENTER	PO4910 IT.5 -FCV SEPT. 92 H. BUS 600 A 480V 3PH 4W 60 HZ	SHORT-CIRCUIT-CURRENT RATING 65,000 AMPS RMS SYM 600 VOLTS MAXIMUM
	Location: Chem Elec Room		
Bucket NO.			
1M	MAIN BREAKER		
2B	LIME SLAKER NO. 1 CONTROL PANEL - CP-12015		
2D	LIME BIN FILTER LBF-12001		LBF-12001
2F	MCC-12012		
2H	BLANK		
2K	BLANK		
2M	BLANK		
3B	BISULFITE RECIRCULATION PUMP - BCP-12002		BCP-12002
3D	HIGH PRESSURE AIR COMPRESSOR - AC-12002		AC-12--2
3F	ELECTRICAL UNIT HEATER - EUH-12006		EUH-12006
3K	ELECTRICAL UNIT HEATER - EUH-12005		EUH-12005
3K	DILUTION WATER PUMP DWP-12002		DWP-12002
3M	DUCT HEATER FOR AHJU-12001		
4D	PNEUMATIC CONVEYING BLOWER CB-12001		CB-12001
4F	BLANK		
4H	BLANK		
4K	AIR HANDLING UNIT AHU-12001		AHU-12001
4M	AIR COOLED CONDENSING UNIT ACC-12002		ACC-12002
5B	PRESSURIZATION UNIT PU-12001		PU-12001
5D	BLANK		
5F	BASEMENT DRAIN PUMP DP-12002		DP-12002
5H	SPARE		
5K	SPARE		
5M	HYPOCHLORITE METERING PUMP HMP-12002		HMP-12002
6D	NPW BOOSTER PUMP NPWP-12001		NPWP-12001
6H	NPW BOOSTER PUMP NPWP-12002		NPWP-12002
6K	AIR REFRIGERATED DRYER ARD-12001		ARD-12001
6M	SPARE STARTER		
7B	BLANK		
7F	INFLUENT MIXER IM-4001		IM-4001
7H	SEPTAGE TANK 1 DRAIN VALVE PV-1001 OUT-OF-SERVICE		
7K	SEPTAGE TANK 2 DRAIN VALVE PV-1002 OUT-OF-SERVICE		
7M	SEPTAGE TANK 3 DRAIN VALVE PV-1003 OUT-OF-SERVICE		
8B	AIR COOLED CONDENSING UNIT ACC-12001		ACC-12001
8D	SPARE STARTER		
8F	BLANK		
8H	VERIZON XFMR		
8K	VOICESTREAM		
8M	SPARE		
9B	EF-12004		EF-12004
9D	BLANK		
9F	SPARE STARTER		
9H	EF-12003		EF-12003
9K	BLANK		
9M	LIGHTING PANELBOARD LP-12005		
	1 LIME BLDG GRND LVL LIGHTS		
	2 ALUM GRND LVL LIGHTS		
	3 LIME BLDG UPPER LVL LIGHTS		
	4 ALUM GRND LVL LIGHTS		
	5 LIME BLDG NIGHT LIGHTS		
	6 ALUM UPPER LVL LIGHTS		
	7 ALUM GRND LVL NIGHT LIGHTS		
	8 ALUM UPPER LVL LIGHTS		
	9 ALUM UPPER LVL NIGHT LIGHTS		
	10 COMPRESSOR ROOM LIGHTS		
	11 POLY/BISULF. NIGHT LIGHTS		
	12 POLY/BISULF. LIGHTS		
	13 W. STAIRWAY LIGHTS		
	14 TUNNEL LIGHTS (FLUOR)		
	15 NE STAIRWAY LIGHTS		
	16 TUNNEL LIGHTS (FLUOR)		
	17 SE STAIRWAY LIGHTS		
	18 TUNNEL LIGHTS (FLUOR)		
	19 TUNNEL NIGHT LIGHTS		
	20 TUNNEL LIGHTS (HPS)		
	21 LAB LIGHTS		
	22 SW ADMIN AREA LIGHTS		
	23 ADMIN AREA NIGHT LIGHTS		
	24 SE ADMIN AREA LIGHTS		
	25 SPARE		
	26 SE ADMIN AREA LIGHTS		
	27 BLOWER/MECH ROOM LIGHTS		
	28 SPARE		
	29 SPARE		
	30 SPARE		
	31 SPARE		
	32 SPARE		

	33	SPACE	
	34	SPACE	
	35	SPACE	
	36	SPACE	
	37	SPACE	
	38	SPACE	
	39	SPACE	
	40	SPACE	
	41	SPACE	
	42	SPACE	
9M		LIGHTING PANELBOARD LP-12005	
10D		POWER PANELBOARD PP-12009	
	1/3	PANEL PP-99001 FEEDER	
		1 EFF DECHLOR BISULF. PUMP #3 12P40303	12P40303
		2 EFF DECHLOR BISULF. PUMP #1 12P40301	12P40301
		3 SPARE	
		4 SPARE	
		5 HYPOCHLORITE USAGE FLOW MTR 12FIT30101	12FIT30101
		6 BISULF USAGE FLOW METER #2 12FIT40102	12FIT40102
		7 BISULF USAGE FLOW METER #1 12FIT40101	12FIT40101
		8 12P32301	
		9 SODIUM HYPO XFER PUMP VALVE 810V44101	810V44101
		10 SPARE	
		11 SPARE	
		12 SPARE	
		13 HEADWORKS CAUSTIC PUMP #1 810P4103	810P4103
		14 SPARE	
		15 CHEMICAL HYPO PUMP #1 810P4104	810P4104
		16 SPARE	
		17 SPARE	
		18 SPARE	
		19 SPARE	
		20 SPARE	
		21 SPARE	
		22 SPARE	
		23 SPARE	
		24 SPARE	
		25 SPARE	
		26 SPARE	
		27 SPARE	
		28 SPARE	
		29 SPARE	
		30 SPARE	
	1	PANEL PP-99001 FEEDER	
	2	ACC-120003	ACC-120003
	3	PANEL PP-99001 FEEDER	
	4	ACC-120003	ACC-120003
	5	AHU-12003	AHU-12003
	6	AHU-12004	AHU-12004
	7	AHU-12003	AHU-12003
	8	AHU-12004	AHU-12004
	9	SPARE	
	10	EXCESS FLOW HYPO #1	12P30301
	11	SPARE	
	12	EXCESS FLOW HYPO #1	12P30301
	13	SPARE	
	14	EXCESS FLOW HYPO #2	12P30302
	15	SPARE	
	16	EXCESS FLOW HYPO #2	12P30302
	17	SPARE	
	18	CRICKET	
	19	SPARE	
	20	CRICKET	
	21	EF12015, MOD12012	EF12015, MOD12012
	22	EUH-12001	EUH-12001
	23	AHU-12002 (LEFT)	AHU-12002
	24	EUH-12001	EUH-12001
	25	AHU-12002 (RIGHT)	AHU-12002
	26	EUH-12002	EUH-12002
	27	EHU-12003	EHU-12003
	28	EUH-12002	EUH-12002
	29	EHU-12003	EHU-12003
	30	HEAT TAPE FOR BV-12001, BV-12002	
	31	HEAT TAPE FOR BREEZEWAY	
	32	HEAT TAPE FOR BV-12041, BV-12042	
	33	HEAT TAPE FOR CHEM DRAIN PUMPS	
	35	EF-12008	EF-12008
	35	SPARE	
	36	LUNCHROOM COUNTERSPACE	
	37	ELEVATOR PIT LIGHTS	
	38	SPACE	
	39	SPRINKLER SYSTEM CLOCK	
	40	SPACE	
	41	ELEVATOR CAB LIGHTS	
	42	SPACE	

10D	POWER PANELBOARD PP-12009	
10H	POWER PANELBOARD PP-12014	
	1 SPARE	
	2 DWH-12002	DWH-12002
	3 SPARE	
	4 DWH-12002	DWH-12002
	5 DWH-12003	DWH-12003
	6 DWH-12004	DWH-12004
	7 DWH-12003	DWH-12003
	8 DWH-12004	DWH-12004
	9 EWH-12001	EWH-12001
	10 EWH-12006	EWH-12006
	11 EWH-12001	EWH-12001
	12 EWH-12006	EWH-12006
	13 EF-12003	EF-12003
	14 SPARE	
	15 EF-12003	EF-12003
	16 SPARE	
	17 EF12013, MOD12010	EF12013, MOD12010
	18 EF-12014, MOD-12011	EF-12014, MOD-12011
	19 EF-12019	EF-12019
	20 EF-12018	EF-12018
	21 EF-12017	EF-12017
	22 MOD-12005	MOD-12005
	23 EF-12017	EF-12017
	24 MU-12006	MU-12006
	25 MU-12005	MU-12005
	26 EF-12020	EF-12020
	27 MOD-12003, 12004, 12005	MOD-12003, 12004, 12005
	28 SPARE	
	29 DWH-12007	DWH-12007
	30 SPARE	
	31 DWH-12007	DWH-12007
	32 SPARE	
	33 AC-12003	AC-12003
	34 EF-12012	EF-12012
	35 SPARE	
	36 EF-12009	EF-12009
	37 DWH-12003	DWH-12003
	38 CLEARWIRE	
	39 DWH-12003	DWH-12003
	40 CLEARWIRE	
	41 SPACE	
	42 SPACE	
10H	POWER PANELBOARD PP-12014	

[Back to the Drawing](#)

12011 EATON CUTLER-HAMMER
FREEDON SERIES 2100
MOTOR CONTROL CENTER

Location: Chem Elec Room

POS06772-2
MAR 93 POC
480V 3PH 3W 60 HZ
H. BUS 600A
SEC 1 300A
SEC 2-5 NO BUS

Bucket NO.

1C FED FROM MCC-12001

1G **PANELBOARD**

1 12003

2 12005

3 12007

4 12023

5 12025

6 12027

7 12031

8 12033

9 12013

10 12015

11 12017

12 12019

13 12041

14 FANS

15 SPARE

16 SPARE

17 SPARE

18 SPARE

19 SPARE

20 SPARE

21 SPARE

22 MAIN

23 SPARE

24 MAIN

1G **PANELBOARD**

1J SPARE STARTER

1M BLANK

2E ALUM METERING PUMP AMP12003 / VFD12003

2J ALUM METERING PUMP AMP12005 / VFD12005

2M AIR GRILL

3E ALUM METERING PUMP AMP12007 / VFD12007

3J POLY METERING PUMP PMP12003 / VFD12023

3M POLY METERING PUMP PMP12005 / VFD12025

4E POLY METERING PUMP PMP12007 / VFD12027

4J BISULFITE METERING PUMP BMP-12001 / VFD12031

4M BISULFITE METERING PUMP BMP-12003 / VFD12033

5E EXCESS FLOW DISINFECTION PUMP #1 12P30301

5J HYPOCHLORITE METERING PUMP HMP12005 / VFD12015

5M HYPOCHLORITE METERING PUMP HMP12007 / VFD12017

6E HYPOCHLORITE METERING PUMP HMP12009 / VFD12019

6M AIR GRILL

[Back to the Drawing](#)



AMP-12003
AMP-12005

AMP-12007
PMP-12003
PMP-12005
PMP-12007
BMP-12001
BMP-12003
12P30301
HMP-12005
HMP-12007
HMP-12009

12012 EATON CUTLER-HAMMER FREEDON SERIES 2100 MOTOR CONTROL CENTER	POS06772-2 MAR 93 POC 480V 3PH 3W 60 HZ H. BUS 600A SEC 1 300A SEC 2-5 NO BUS	SHORT-CIRCUIT-CURRENT RATING 65,000 AMPS RMS SYM 600 VOLTS MAXIMUM
Location: Chem Elec Room		

Bucket NO.

- 1C FED FROM MCC-12002
- 1G **PANELBOARD**
 - 1 12002
 - 2 12004
 - 3 12006
 - 4 12022
 - 5 12024
 - 6 12032
 - 7 12008
 - 8 12026
 - 9 12028
 - 10 12014
 - 11 12016
 - 12 12018
 - 13 12042
 - 14 12051
 - 15 FANS
 - 16 SPARE
 - 17 SPARE
 - 18 SPARE
 - 19 SPARE
 - 20 SPARE
 - 21 SPARE
 - 22/24 MAIN
 - 23 SPARE
 - 22/24 MAIN
- 1G **PANELBOARD**
- 1J SPARE
- 1M BLANK
- 2E ALUM METERING PUMP AMP-12002 / VFD-12002
- 2J ALUM METERING PUMP AMP-12004 / VFD-12004
- 2M AIR GRILL
- 3E ALUM METERING PUMP AMP-12006 / VFD-12006
- 3J POLY METERING PUMP PMP-12002 / VFD-12022
- 3M POLY METERING PUMP PMP-12004 / VFD-12024
- 4E POLY METERING PUMP PMP-12006 / VFD-12026
- 4J ALUM METERING PUMP AMP-12008 / VFD12008
- 4M POLYMER METERING PUMP PMP-12006 / VFD12026
- 5E POLYMER METERING PUMP PMP-12008 / VFD12028
- 5J EXCESS FLOW DISINFECTION MUMP 2 12P30302
- 5M HYPOCHLORITE METERING PUMP HMP-12006 / VFD-12016
- 6E HYPOCHLORITE METERING PUMP HMP-12008 / VFD-12018
- 6J HYPO LOOP PUMP #2 12P31302 / VFD-12042
- 6M POLYMER MIXER PM-12003 / VFD-12051

[Back to the Drawing](#)

13001	WESTINGHOUSE				
				1200 AMPS 480V 3PH	
	Location: PHONE ROOM				
Bucket NO.					
1F	GENERAL POWER LOADS	XFMR-13001			XFMR-13001
	PP-13013				
		1	PLUG ROOMS 109, 110, 111		
		2	PLUG ROOMS 111, 112, 113		
		3	PLUG ROOMS 115, 116, 117		
		4	PLUG ROOMS 120, 121, 122		
		5	PLUG ROOMS 100, 102, 118, 122		
		6	PLUG ROOMS 103, 104, 105, 106		
		7	PLUG ROOMS 119, 123		
		8	PLUGS 130, 131, 132, 133		
		9	PLUGS ROOM 114		
		10	PLUGS 134, 144, 145		
		11	PLUGS 142, 143, 147, 148		
		12	PLUGS ROOM 135 & 136		
		13	EF-13020		EF-13020
		14	PLUGS ROOM 135 & 136		
		15	SF-13001		SF-13001
		16	PLUGS ROOM 135 & 136		
		17	EF-13018		EF-13018
		18	PLUGS ROOM 135 & 136		
		19	EF-13012		EF-13012
		20	EF-13013		EF-13013
		21	PLUGS 101 & FL128		
		22	EF-13014		EF-13014
		23	COUNTER PLUG LUNCH ROOM		
		24	EF-13023		EF-13023
		25	REFER		
		26	MICROWAVE		
		27	WTR-13001, WTR-13002, WTR-13003, WTR-13004		WTR-13001,13002, 13003, 13004
		28	PLUGMOLD ROOM 102		
		29	PLUGMOLD SW CONSOLE		
		30	COMPUTER UPS		
		31	ELEV WTR COOLER #2		
		32	COFFEE MAKER ROOM 103		
		33	COFFEE MAKER, MTG ROOM		
		34	PLUGS 128, 129		
		35	PLUG LAV & ROOM 114		
		36	WATER COOLER		
		37	ELECT. WATER COOLER 2-3		
		38	HWP-13001		HWP-13001
		39	EF-13019		EF-13019
		40	PLUGMOLD ROOM 118		
		41	UPS COMPUTER		
		42	COMPUTER UPS		
	PP-13013				
	PP-13021 - IN THE MAINTENANCE SHOP				
		1	PLUG MOLD N & W		
		2	PLUG MOLD N & W		
		3	PLUG MOLD N & W		
		4	PLUG MOLD N & W PM AREA		
		5	PLUG MOLD N & W		
		6	PLUG MOLD N & W		
		7	PLUG MOLD N & W		
		8	PLUG MOLD N & W		
		9	BATTERY CHARGER RECEPTACLE		
		10	PLUG MOLD N & W		
		11	BATTERY CHARGER RECEPTACLE		
		12	PLUG MOLD N & W		

		13	BATTERY CHARGER RECEPTACLE		
		14	BATTERY CHARGER RECEPTACLE		
		15	BATTERY CHARGER RECEPTACLE		
		16	SPARE		
		17	BATTERY CHARGER RECEPTACLE		
		18	SPARE		
		19	BATTERY CHARGER RECEPTACLE		
		20	2" PIPE MACHINE		
		21	STEAM CLEANER		
		22	HOT TANK		
		23	PARTS WASHER		
		24	BAND SAW		
		25	FORGE		
		26	TABLE SAW		
		27	DRILL BIT GRINDER		
		28	ROD HEATER		
		29	WIRE WELDER		
		30	CONVENIENCE RECEPTACLE DISSASSEMBLY		
		31	CONVENIENCE RECEPTACLE DISSASSEMBLY		
		32	ELECTRIC DOOR OPERATOR		
		33	ELECTRIC DOOR OPERATOR		
		34	ELECTRIC DOOR OPERATOR		
		35	ELECTRIC DOOR OPERATOR		
		36	WELDING		
		37	ELECTRIC DOOR OPERATOR		
		38	PANEL 13022		
		39	AIR DRYER		
		40	PANEL 13022		
		41	EAST JIB CRANE		
		42	PANEL 13022		
		PP-13021 - IN THE MAINTENANCE SHOP			
		PP-13025			
		1	STOVE		
		2	DRYER		
		3	STOVE		
		4	DRYER		
		5	SPARE		
		6	SPARE		
		7	SPARE		
		8	SPARE		
		9	WH-13006		
		10	PHONE EQ. HVAC		
		11	WH-13006		
		12	PHONE EQ. HVAC		
		13	SPARE		
		14	SPARE		
		15	SPARE		
		16	GARBAGE DISPOSAL		
		17	VENDING MACHINE #1		
		18	PHOTOCELL		
		19	VENDING MACHINE #2		
		20	I&E OUTSIDE LIGHTS		
		21	VENDING MACHINE #3		
		22	WASHER ROOM 143		
		23	EF-13008		
		24	COFFEE POT L.R.		
		25	AIR COMPRESSOR ROOM 126		
		26	INSTA HOT LUNCH ROOM		
		27	13001 HWLP		
		28	SPARE		
		29	POWER TO GATE FA BOX		
		30	SPARE		
		31	SPARE		
		32	UPS		
		33	SPARE		
		34	UPS		

		35	BLANK	
		36	BLANK	
		PP-13025		
1F	GENERAL POWER LOADS XFMR-13001			
1H	PC-13001			
		PP-13012		
		1	PLUGS ROOM 118	
		2	PLUGS ROOM 102 & 128	
		3	SPARE	
		4	PLUGS ROOM 109	
		5	PLUGS ROOM 110	
		6	PLUGS ROOM 111	
		7	PLUGS ROOM 112	
		8	PLUGS ROOM 113	
		9	PLUGS ROOM 114	
		10	PLUGS ROOM 128	
		11	PLUGS ROOM 129	
		12	PLUGS ROOM 129	
		13	PLUGS ROOM 115	
		14	PLUGS ROOM 119	
		15	PLUGS ROOM 123	
		16	PLUGS ROOM 120	
		17	PLUGS ROOM 121	
		18	PLUGS ROOM 122	
		19	PLUGS ROOM 134	
		20	PLUGS ROOM 172	
		21	PLUGS ROOMS 163 & 171 "B"	
		22	PLUGS ROOM 163 "B"	
		23	PLUGS ROOM 163 "B"	
		24	FIRE ALARM SYSTEM	
		25	TELEPHONE	
		26	COMM. BOARD	
		27	PLUGS ROOM 135	
		28	COMM. BOARD	
		29	PLUGS ROOM 136	
		30	SPARE	
		31	SPARE	
		32	SPARE	
		33	SPARE	
		34	SPARE	
		35	PLUGS ROOM	
		36	FLOOR RECEPTACLE ROOM 128	
		37	SPARE	
		38	SPARE	
		39	PLUGS ROOM 137	
		40	SECURITY PANEL "A"	
		41	SPARE	
		42	SPARE	
		PP-13012		
1H	PC-13001			
1K	ICF-13001			
1M	EF-13025			
2B	CONDITION WATER RECIRCULATION PUMP 1 CNWP-13001			CNWP-13001
2D	CONDITION WATER RECIRCULATION PUMP 2 CNWP-13002			CNWP-13002
2F	HOT WATER RECIRCULATION PUMP 1 HLP-13001			HLP-13001
2H	HOT WATER RECIRCULATION PUMP 2 HLP-13002			HLP-13002
2K	COLD WATER RECIRCULATION PUMP 1 CWP-13001			CWP-13001
2M	COLD WATER RECIRCULATION PUMP 2 CWP-13002			CWP-13002
3B	DOMESTIC HOT WATER CURCULATION PUMP 1 HWLP-13001			HWLP-13001
3D	BLANK			
3F	EXHAUST FAN LOCKER ROOM AREA EF-13009			EF-13009
3K	MATERIAL STORAGE EXHAUST FAN EF-13021			EF-13021
3M	ASSEMBLY MAINTENANCE SHOP EXHAUST FAN EF-13024			EF-13024
4C	MTR FOR PANEL ELECT. SHOP			
4D	HOT WATER BOILER HWB-13001			HWB-13001
4E	ENTRANCE GATE EGO-13001			EGO-13001

4F	ENTRANCE GATE EGO-13002		EGO-13002
4G	ENTRANCE GATE EGO-13003		EGO-13003
4H	DOOR 145		
4J	DOOR 146		
4K	DOOR 147		
4M	WELDING ROOM EXHAUST FAN		
5F	TO FEED MCC-13002		
5G	LIGHTING PANEL LP-13011		
	1	LIGHTING AREA A	
	2	LIGHTING AREA A	
	3	LIGHTING AREA A	
	4	LIGHTING AREA A	
	5	LIGHTING AREA A	
	6	LIGHTING AREA A	
	7	LIGHTING AREA A - ELECTRICAL SHOP	
	8	LIGHTING AREA C	
	9	LIGHTING AREA A - LUNCH ROOM	
	10	LIGHTING AREA C	
	11	LIGHTING AREA A	
	12	CORRIDOR LIGHTING AREA A	
	13	CORRIDOR LIGHTING AREA C	
	14	EXIT LIGHTS	
	15	LIGHTING AREA C	
	16	SPARE	
	17	LIGHTING AREA C	
	18	SHOP - NORTH LIGHTS	
	19	LIGHTING AREA C	
	20	SHOP - SOUTH LIGHTS	
	21	MECH ROOM LIGHTING ABOVE BTH	
	22	SHOP - SOUTH LIGHTS	
	23	SPARE	
	24	SPARE	
5G	LIGHTING PANEL LP-13011		
5M	AIR HANDLING ADMIN AREA AHU-13001		AHU-13001
6G	MAIN BREAKER		
6M	MAINTENANCE AREA PP-13014		
	PP-13014-A		
	1	PIPE MACHINE	
	2	ARC WELDER	
	3	SPARE	
	4	DRILL PRESS	
	5	DISCONNECT ASSEMBLY (SPARE)	
	6	WEST AIR CONDITIONER 13002	
	7	AIR HANDLER	
	8	SPARE	
	9	SPARE	
	10	SPARE	
	11	SOUTH JIB CRANE	
	12	SPARE	
	13	SPARE	
	14	SPARE	
	PP-13014-A		
	PP-13014-B		
	1	SPARE	
	2	TRANSFORMER PANEL LLG	
	3	SPARE	
	4	SPARE	
	5	SPARE	
	6	SPARE	
	7	SPARE	
	8	SPARE	
	9	CUT OFF SAW	
	10	ROLL CRANE	
	PP-13014-B		
6M	MAINTENANCE AREA PP-13014		

[Back to the Drawing](#)

13002	WESTINGHOUSE				
				1200 AMPS 480V 3PH	
	Location: STORES				
Bucket NO.					
1F	MAIN BREAKER				
1L	LABORATORY GENERAL POWER XFMR-13003				
	PP-13010				
		1	240V RECEPTACLE ROOM 153		
		2	240V RECEPTACLE FH 3&4, CH2		
		3	240V RECEPTACLE ROOM 153		
		4	240V RECEPTACLE FH 3&4, CH2		
		5	FH 3&4, CH2 PLUG MOLDING		
		6	240V RECEPTACLE FH 1&2		
		7	FH 3&4, CH2 PLUG MOLDING		
		8	240V RECEPTACLE FH 1&2		
		9	DI-13001		
		10	FIRE SPRINLER COMPRESSOR		
		11	WATER HEATER PUMP 13003		
		12	HRP-13001		
		13	GAS UNIT HEATERS		
		14	PLUG MOLDING ROM 151W		
		15	ROOF RECEPTACLES		
		16	PLUG MOLDING ROM 151E		
		17	AHU-13004		
		18	RECEPTACLES ROOMS 158, 159, 160 & 176		
		19	RECEPTACLES ROOMS 161 & 162		
		20	CH1 PLUG MOLDING		
		21	EF-13007		
		22	CH1 PLUG MOLDING		
		23	CH2 PLUGS		
		24	SPARE		
		25	CH2 PLUGS		
		26	SPARE		
		27	FLH PLUGS		
		28	CONTROL PANEL		
		29	FLH PLUGS		
		30	HRP PUMP		
		31	AH-13004 CONTROL		
		32	SPARE		
		33	PLUGS ROOM 161		
		34	SPACE		
		35	EF-13017		
		36	SPACE		
		37	PLUGS ROOM 161		
		38	SPACE		
		39	MUFFLE FURNACE		
		40	SPACE		
		41	MUFFLE FURNACE		
		42	SPACE		
	PP-13010				
	PP-13016				
		1	GLASS WASHER #1		
		2	REFER REC ROOM		
		3	GLASS WASHER #3		
		4	GLASS WASHER GWL		
		5	DISP DSP #1		
		6	PLUGS ROOM 155, 156		
		7	PLUGMOLD ROOM 154 SW CRT		
		8	CART BATT CHARGER		
		9	PLUGMOLD ROOM 151 S		
		10	ROOF PLUG E SECTOR		

		11	PLUGMOLD ROOM 151 S	
		12	AUTO ANALYZER	
		13	PLUG MOLD ROOM 153 E	
		14	PLUG MOLD ROOM 153	
		15	PLUG MOLD ROOM 153 E	
		16	BOD INCUBATORS	
		17	AUTOCLAVE	
		18	AUTOCLAVE	
		19	PLUG AND CLOCK LAS	
		20	AUTOCLAVE	
		21	FH1 & CH1 PLUGMOLD	
		22	PLUGMOLD NORTH WALL	
		23	FH1 & CH1 PLUGMOLD	
		24	PLUGMOLD NORTH WALL	
		25	PLUGMOLD SE PENINSULA	
		26	PLUGMOLD SW PENINSULA	
		27	PLUGMOLD & UCR1 SE PENINSULA	
		28	PLUGMOLD SW PENINSULA	
		29	PLUGMOLD ROOM 154 SOUTH WALL	
		30	PLUGMOLD & UCR5 SE ISLAND	
		31	PLUGMOLD ROOM 154 SOUTH WALL	
		32	PLUGMOLD SE ISLAND	
		33	PLUGMOLD SE ISLAND	
		34	PLUGMOLD AND UCR3 NW ISLAND	
		35	PLUGMOLD AND UCR4 SE ISLAND	
		36	PLUGMOLD NW ISLAND	
		37	PLUGMOLD SW ISLAND	
		38	UNDERCOUNTER LIGHTS	
		39	PLUGMOLD SW ISLAND	
		40	PLUG ROOM 157	
		41	CANOPY AND FUME HOODS	
		42	PLUG ROOM 157	
			PP-13016	
1L			LABORATORY GENERAL POWER XFMR-13003	
1M			LP-13020	
		1	LIGHTS - ROOM 151, 152, 153	
		2	LIGHTS - ROOM 150, 155, 156, 157	
		3	LIGHTS - ROOM 154	
		4	LIGHTS - ROOM 154	
		5	LIGHTS - ROOMS 161, 162	
		6	LIGHTS - ROOMS 161, 162	
		7	LIGHTS - ROOMS 158, 159, 160, 163	
		8	EXIT LIGHTS	
		9	SPARE	
		10	SPARE	
		11	POWER SUPPLY RELAYS	
		12	SPARE	
1M			LP-13020	
2C			SPARE	
2E			SPARE	
2G			AIR HANDLING UNIT LAB AREA AHU-13002	AHU-13002
2H			BLANK	
2M			STORES EXHAUST FAN EF-13016	EF-13016
3B			FAN COIL 1 FC-13001	FC-13001
3D			FAN COIL 2 FC-13002	FC-13002
3F			FAN COIL 3 FC-13003	FC-13003
3H			FAN COIL 4 FC-13004	FC-13004
3K			FAN COIL 5 FC-13005	FC-13005
3M			SPARE	
4B			EXHAUST FAN FUME HOOD 2 EF-13002	EF-13002
4D			EXHAUST FAN FUME HOOD 1 EF-13001	EF-13001
4F			EXHAUST FAN FUME HOOD 3 EF-13003	EF-13003
4H			EXHAUST FAN FUME HOOD 4 EF-13004	EF-13004
4K			EXHAUST FAN FUME HOOD 5 EF-13005	EF-13005
4L			VACUUM PUMP VP-13001	VP-13001

4M	AIR COMPRESSOR AC-13001	AC-13001
5B	SPARE	
5C	DOOR 172	
5D	DOOR 173	
5F	SPARE	
5K	BLANK	
5M	SPARE	
6B	BLANK	
6D	BLANK	
6E	XFMR-13002	
	PP-13015	
	1 RECEPTACLES ROOM 153	
	2 RECEPTACLES ROOM 151	
	3 BALANCES	
	4 RECEPTACLES NE ISLAND	
	5 RECEPTACLES NW ISLAND	
	6 RECEPTACLES SE ISLAND	
	7 RECEPTACLES SW ISLAND	
	8 RECEPTACLES ROOM 155	
	9 RECEPTACLES ROOM 157	
	10 RECEPTACLES ROOM 155	
	11 RECEPTACLES ROOM 157	
	12 RECEPTACLES ROOM 157	
	13 LCP-13004 & LCP-13006	
	14 RECEPTACLES ROOM 160	
	15 RECEPTACLES ROOM 158	
	16 RECEPTACLES ROOM 159	
	17 RECEPTACLES ROOM 161	
	18 SPARE	
	19 SPARE	
	20 SPARE	
	21 SPARE	
	22 SPARE	
	23 SPARE	
	24 SPARE	
	PP-13015	
6E	XFMR-13002	
6G	BLANK	
6J	AIR HANDLING UNIT CANOPY HOOD AHU-13003	AHU-13003
6M	SPARE	

[Back to the Drawing](#)

MC1A	WESTINGHOUSE		SUPPLY 1200 AMPS		
			480 V 3PH AC		
			SECTIONS 4-6, 10-13 300 AMPS		
	Location: Solds Up. Basmt Hall				
Bucket NO.					
1M	SPARE				
2D	SPARE				
2H	SPARE				
2M	SPARE				
3M	SPARE				
4M	SPARE				
5D	BLANK				
5F	SPARE				
5H	BLANK				
5M	SPARE (TRANSFER PUMP?)				
6M	BLANK				
7M	BLANK				
8D	BLANK				
8H	SP				
8M	MCIC FEEDER BREAKER				
9M	SPARE				
10C	SPARE				
10F	SPARE				
10J	SPARE				
10M	BLANK				
11D	FEEDER TO MCC-11231				
11G	SPARE				
11M	BLANK				
12C	SPARE				
12F	SPARE				
12J	OIL PRESSURE PUMP NO. 1				
12M	SPARE				
13C	OIL PRESSURE PUMP NO. 2				
13G	BLANK				
13J _L	ELEVATOR				
13J _R	INCINERATOR BUILDING EXIT LIGHTS				
13M	SPARE				

[Back to the Drawing](#)

MC1B	WESTINGHOUSE		SUPPLY 1200 AMPS		
			480 V 3 PHASE AC		
			SECTIONS 1, 4-11, 15 300 AMPS		
	Location: Solids Up. Basmt Hall				
Bucket NO.					
1D	PTP-11630 (SPARE?)				PTP-11630
1H	CONTROL ROOM CLIMATE CONTROL UNIT				SC/13
1M	SPARE				
2B	STAIRWELL LIGHT				
2D	STAIRWELL LIGHT				
2L	PANEL LHIB				
	1 N.L.				
	2 LIGHTS SOUTH TUNNEL				
	3 LIGHTS SOUTH TUNNEL				
	4 LIGHTS OUTDOOR				
	5 LIGHTS SOUTH STAIR				
	6 NIGHTS NORTH STAIR				
	7 LIGHTS ROADWAY				
	8 SPARE				
	9 F.P. LIGHT				
	10 N.L.				
	11 SPARE				
	12 N.L.				
	13 LOWER BASEMENT INCINERATOR ROOM SOUTH SIDE				
	14 LOWER BASEMENT PUMP ROOM				
	15 LOWER BASEMENT INCINERATOR ROOM NORTH SIDE				
	16 LOWER BASEMENT PUMP ROOM				
	17 UPPER BASEMENT INCINERATOR ROOM				
	18 LOWER BASEMENT PUMP ROOM				
	19 UPPER BASEMENT INCINERATOR ROOM				
	20 LOWER BASEMENT PUMP ROOM				
	21 ELEC. EQUIPMENT ROOM				
	22 UPPER BASEMENT PUMP ROOM				
	23 HALLWAY				
	24 MAIN FLOOR INCINERATOR ROOM				
	25 SLUDGE THICKENING ROOM				
	26 MAIN FLOOR INCINERATOR ROOM				
	27 SLUDGE THICKENING ROOM				
	28 SLUDGE THERMIC CONDITIONING ROOM				
	29 SECOND FLOOR INCINERATOR ROOM				
	30 SLUDGE THERMIC CONDITIONING ROOM				
	31 SECOND FLOOR INCINERATOR ROOM *HOSING				
	32 BOILER ROOM				
	33 SECOND FLOOR INCINERATOR ROOM *HOSING				
	34 BOILER/ASH ROOM				
	35 SLUDGE D.W. ROOM				
	36 CONTROL ROOM LIGHTS				
	37 SLUDGE D.W. ROOM				
	38 24V LIGHT RELAY				
	39 EXIT LIGHTS				
	40 SPARE				
	41 SPACE				
2L	PANEL LHIB				
2M	BLANK				
3F	SPEED CONTROLLERS				
3M	RELAY CONTROL				
4D	MAIN FUSE SWITCH PANEL LHIB				
4H	PTP-11631 (SPARE?)				PTP-11631
4M	PTP-11650 (SPARE?)				PTP-11650
5D	PRP-11621 (SPARE?)				PRP-11621
5F	BLANK				
5J	PRP-11624 (SPARE?)				PRP-11624
5M	PRP-11627 (SPARE?)				PRP-11627
6C	PMP-11610 (SPARE?)				PMP-11610
6K	PANEL LLIB				
	1 RECEPTACLES				
	2 RECEPTACLES (ALL39 SYSTEM?)				
	3 RECEPTACLES				
	4 RECEPTACLES SECOND FLOOR				
	5 RECEPTACLES LOWER BASEMENT				
	6 RECEPTACLES SECOND FLOOR				
	7 RECEPTACLES & LIGHTS MAIN FLOOR				
	8 CONTACTOR, STAIR LIGHTS				
	9 RECEPTACLES MAIN FLOOR				
	10 DOOR OPENER AND LIGHTS OUTSIDE				
	11 RECEPTACLES MAIN FLOOR				
	12 OFFICE AIR CONDITIONER				
	13 FERRIC PUMP NO.1				
	14 OFFICE AIR CONDITIONER				
	15 ALUM #3				
	16 SHARPLES #3 LIGHTS				
	17 ALUM PUMP NO. 1				

	18	ELEVATOR PACKAGE	
	19	NEW POLY FLOW METER	
	20	ELEVATOR / UTILITY	
	21	LIGHTS / VESTIBULE	
	22	EMERGENCY STAIR LIGHTS AND SOLIDS HALLWAY	
	23	OUTDOOR LIGHTS	
	24	SECOND FLOOR STORAGE	
	25	EM. DRIVE	
	26	FAN E-22-1	E-22-1
	27	EM. DRIVE	
	28	CONTROL ANATEC	
	29	FAN E-16-4	E-16-4
	30	LIGHT 501 - PVC 354	
	31	LC - 520	LC-520
	32	WATER HEATER	
	33	RECPETACLE NORTH TUNNEL (PRI. SLUDGE FLOW)	
	34	OIL LEVEL TRANSMITTER	
	35	RECEPTACLES NORTH TUNNEL	
	36	DUST COLLECTOR CONTROL PANEL	
	37	FIRE ALARM SYSTEM	
	38	S.P.C.P.	
	39	S.P.C.P.	
	40	POLYMER FEED PUMP #3	
	41	S.P.C.P.	
6K		PANEL LLIB	
6M _L		TRANSFORMER T-22 BREAKER	
6M _R		PANEL LLIB MAIN BREAKER	
7F		BLANK	
7M		BLANK	
8D		SPARE	
8G		PRP-11641 (SPARE?)	PRP-11641
8J		PHASE FOUR TEMPORARY POWER DEWATERING PUMP #2	
8M		PMP-11611 (SPARE?)	PMP-11611
9D		PM-11636 (SPARE?)	PM-11636
9H		SPARE	
9M		POLYMER FEED PUMP NO. 2 (SPARE?)	
10B _L		RD-11002 (SPARE?)	RD-11002
10B _R		CP-11600 (SPARE?)	CP-11600
10D		SPARE	
10G		SPARE	
10K		SPARE	
10M		BLANK	
11C		SPARE	
11H		SPARE	
11M		MAIN FEEDER TO MCC-11232	
12M		SPARE	
13D		RELAYS FOR CENTRIFUGE NO. 7 (OBSOLETE)	
13H		RELAYS FOR CENTRIFUGE NO. 8 (OBSOLETE)	
13M		BLANK	
14M		SPARE	
15M		SPARE	
16D		RELAYS FOR CENTRIFUGE NO. 9 (OBSOLETE)	
16H		BLANK	
16M		BLANK	
Back to the Drawing			

MC1C	WESTINGHOUSE		1200 AMPS 480V 3PH		
	Location: Solids Elec. Room				
Bucket NO.					
1M	BLANK				
2D	SPARE				
2H	SPARE				
2M	BLANK				
3C	PP-9009				
3G	MCIG FEED				
3J	BLANK				
3M	BLANK				
4E	SPARE				
4K	SPARE				
4M	MAIN OVERHEAD DOOR OPERATOR				
5C	SUMMER VENTILATION V-2-2				V-2-2
5G	SUMMER VENTILATION V-1-1				V-1-1
5L	SUMMER VENTILATION V-2-1				V-2-1
6E	PANEL LLIC				
6J	SPARE				
6M	BLANK				
7D	SPARE				
7H	SPARE				
7K _L	WELDING OUTLETS				
7K _R	AIR CONDITIONER				
7M _L	TRANSFORMER T-21 BREAKER				
7M _R	PANEL LLIC MAIN BREAKER				
8D	SPARE				
8F	SPARE				
8J	SPARE				
8M	BLANK				
9E	MCIC MAIN BREAKER FEED FROM MCIA				
9H	SPARE				
9M	SPARE				

[Back to the Drawing](#)

MC1D-1	WESTINGHOUSE				
			1200 AMPS 480V 3PH		
			SECT. 1-3, 6-10 300 AMPS		
			SECT. 4 800 AMPS		
	Location: Solids 2nd Floor		SECT. 5 500 AMPS		
Bucket NO.					
1F	SCUM GRINDER				
1K	SPARE				
1M _L	TRANSFORMER T-15 BREAKER				
1M _R	PANEL LLID-1 MAIN BREAKER				
2D	PANEL LLID-1				
	1	SOUTH WALL RECEPTACLES			
	2	STUB TUNNEL			
	3	E-17-1		E-17-1	
	4	SPARE			
	5	SPARE			
	6	N.W. THICKENER LIGHTS			
	7	SPARE			
	8	CONTROL ROOM RECEPTACLES			
	9	SPARE			
	10	SPARE			
	11	SPARE			
	12	SPARE			
	13	N.W. THICKENER RECEPTACLES			
	14	M-V LIGHTS OUTSIDE			
	15	AIR COMPRESSOR DRAIN CONTROL			
	16	SPARE			
	17	SPACE			
	18	SPARE			
	19	SPACE			
	20	SPARE			
	21	SPACE			
	22	AIR COMPRESSOR DRYER 57-15		57-15	
	23	SPACE			
	24	AIR COMPRESSOR DRYER 57-15		57-15	
2D	PANEL LLID-1				
2H	MUFFIN MONSTER #1 32-13			32-13	
2M	SPARE				
3D	SPARE				
3L	SPARE				
4D	FEEDER BREAKER MCOB				
4H	FEEDER BREAKER MCID-2				
4K	PLANT AIR COMPRESSOR #1 57-20			57-20	
4M	PLANT AIR COMPRESSOR #2 57-21			57-21	
5D	SPARE				
5G	DISTRIBUTION PANEL				
	1	CONTROL PANEL UTIL. POWER			
	2	SPARE			
	3	CONTROL PANEL REACT. #1			
	4	SPARE			
	5	CONTROL PANEL REACT. #2			
	6	SPARE			
	7	REACTOR #1 INSTRUMENTS			
	8	SPARE			
	9	REACTOR #2 INSTRUMENTS			
	10	SLUDGE PUMP IN MANHOLE			
	11	SPARE			
	12	EDDY CURRENT DRIVE			
5G	DISTRIBUTION PANEL				
5J	CONTROL TRANSFORMER 460V CIRCUIT BREAKER				
5K	BLANK				
5M	CONTROL TRANSFORMER 7.5 KVA				
6F	SPARE				

6M	SPARE	
7F	SPARE	
7J	SPARE	
7M	SPARE	
8C	SPARE	
8F	SPARE	
8M	SPARE	
9D	SPARE	
9F	FLEXIPULSE	
9M	SPARE	
10F	SPARE	
10M	EDDY CURRENT DRIVE	

[Back to the Drawing](#)

MC1D-2	WESTINGHOUSE		1200 AMPS 480V 3PH		
	Location: Solids 2nd Floor				
Bucket NO.					
1D	SPARE				
1H	SPARE				
1M	SPARE				
2C	SPARE				
2G	SPARE				
2K	SPARE				
2M _L	TRANSFORMER T-23 BREAKER				
2MR	PANEL LLID-2 BREAKER				
3D	B-701				
3J	PANEL LLID-2				
	1 RECEPTACLES INCINERATOR BUILDING				
	2 RECEPTACLES INCINERATOR BUILDING				
	3 RECEPTACLES INCINERATOR BUILDING				
	4 RECEPTACLES INCINERATOR BUILDING				
	5 CHEM PUMP NO. 3				
	6 SPARE				
	7 CHEM AGITATOR NO. 2				
	8 WATER CONDITIONER				
	9 CHEM PUMP 1				
	10 SPARE				
	11 CHEM PUMP NO. 4				
	12 SPARE				
	13 ROOF OUTLET				
	14 ROOF OUTLET				
	15 POLYMER UNIT				
	16 UH-7-2, UH-9-1, UH-7-4				
	17 UH-7-1				
	18 UH-5-1, UH-8-1				
	19 UH-1-9, UH-1-10, UH-1-11				
	20 ALTERNATOR				
	21 SPARE				
	22 ?				
	23 ?				
	24 ?				
	25 ?				
	26 ?				
	27 ?				
	28 ?				
	29 ?				
	30 ?				
3J	PANEL LLID-2				
3M	BLANK				
4B _L	SPARE				
4B _R	SPARE				
4D	SPARE				
4G	SPARE				
4M	HEALY RUFF ALTERNATOR & RELAYS??				
5D	SEAL WATER PUMP NO. 1				
5H	SEAL WATER PUMP NO. 2				
5M	SEAL WATER PUMP NO. 3				

[Back to the Drawing](#)

MC1G						
	Location: Solids Elect. Room					
Bucket NO.						
1M	BLANK					
2B	SPARE					
2D	SPARE					
2F _L	TRANSFORMER LINE DISCONNECT					
2F _R	PANEL MAIN BREAKER					
2K	LP-1G					
2M	7.5 KJA 1Ø TRANSFORMER					
3B	BLANK					
3D	SPARE					
3F	SPARE					
3H	SPARE					
3M	BLANK					
4C	EXHAUST FAN EF-30-1					EF-30-1
4F	BLANK					
4H	SPARE					
4K	EXHAUST FAN EF-31-1					EF-31-1
4M	SPARE (EF-33-1?)					EF-33-1
Back to the Drawing						

MCOB	WESTINGHOUSE		1200 AMPS 480V 3PH		
	Location: Fuel Oil Building				
Bucket NO.					
1D	MAIN BREAKER				
1F _L	TRANSFORMER T-20 BREAKER				
1F _R	PANEL LLOB MAIN BREAKER				
1J	PANEL LLOB				
	1	BUILDING LIGHTS			
	2	BASIN STAIR RECEPTACLES			
	3	RADIANT HEATER			
	4	EYEWASH HEATER			
	5	BUILDING RECEPTACLES			
	6	LIT-602			LIT-602
	7	OIL LEVEL METER			
	8	CS-602			CS-602
1J	PANEL LLOB				
1M	BLANK				
2C	OIL PUMP NO. 1				
2E	OIL PUMP NO. 2				
2F	BLANK				
2M	TRANSFORMER T-20 BREAKER				
3E	FLOATING AERATOR MOTOR NO. 1 (SOUTH PUMP)				
3K	FLOATING AERATOR MOTOR NO. 1 (SOUTH PUMP)				
3M _L	SAMPLE STATION FEEDER BREAKER				
3M _R	SPARE				
4E	FLOATING AERATOR MOTOR NO. 3				
4G _L	OUTDOOR LIGHTING				
4G _R	SPARE				
4K	MAIN GROUNDS CREW BUILDING				
4M	DP101				

[Back to the Drawing](#)

MCPA	WESTINGHOUSE				
			1200 AMPS 480V 3PH		
	Location: RSPS				
Bucket NO.					
1D	ROOF EXHAUSTER				
1G	BLANK				
1M	SUMP PUMP NO. 2				
2C	BLANK				
2H	SUMP PUMP NO. 1				
2K _L	WELDING OUTLET				
2K _R	GATE OPERATOR "A"				
2M _L	TRANSFORMER T-14 FEEDER				
2M _R	PANEL LLP BREAKER				
3D	PANEL LLP				
3F	PHPA				
3M	TRANSFORMER T-14				

[Back to the Drawing](#)

MCC-MCPC

1		2	3		4		5	Enclosure: NEMA 12 480 Volt 3 Phase 60 Hz Horiz Bus 600 Amp Vert. Bus 300 Amp Interrupting Capacity: 30 KA SIEMENS S.O. 0811-920 Date: 08.12.22
1B		2F	3C		4B		5BL 5BR	
1D			3F		4D		5D	
1F					4F		5F	
1M		2M	3J		4H		5HL 5Hr	
			3M		4K		5KL 5KR	
					4M		5M	

1B	Main Incoming Lugs		5F	SPARE BREAKER
1D	Dryer Inlet Fan - M707		5HL	Panel LLP
1F	Dryer Outlet Fan - M708		5HR	Bagging System Power - F714
1M	Reactor #1 Recirculation Pump - M702		5KL	Panel LHP
2F	Reactor #2 Recirculation Pump - M704		5KR	Welding Outlet
2M	Reactor #3 Recirculation Pump - M706		5M	SPARE BREAKER
3C	SPARE VFD			
3F	SPARE VFD			
3J	Emergency Power			
3M	Dryer Bed Motors 1&2 - M709 & M710			
4B	Dewatering Screen - M711			
4D	SPARE VFD - (Future Biofilter Odor Control Fan?)			
4F	SPARE VFD			
4H	Classifying Screen			
4K	SPARE VFD			
4M	Sump Pump			
5BL	Dryer Heater Panel - F713			
5BR	AHU-1 Air Handling Unit - 1			
5D	Spare			

Panel LHP			
1	Ground Level Lights	2	
3	Exit Sign	4	Pressure Washer Receptacle
5	North Outside Lights	6	
7	Basement Level Lights	8	Empty
9		10	Empty
11		12	Empty
13	Hot Water Heater	14	Empty
15		16	Empty
17		18	Empty
19		20	Empty
21	West Hoist	22	Empty
23		24	Empty
25	North Hoist	26	Empty
27		28	Empty
29		30	Empty

Voltage LL: 480
 Bus Rating: 150 KAIC
 Voltage LG: 120 / 100A

SC Rating SYM: 10 KAIC
 Phase / Wire: 3PH / 4W
 Enclosure: NEMA 1

[Back to the Drawing](#)

Location: Struvite Recovery Facility



Panel LLP			
1	Lighting	2	Receptacles
3		4	
5		6	Receptacles
7	Air Quality Alm	8	
9	Recepts Bsmt	10	Receptacle / Stairway Lights
11	Recepts Bsmt	12	
13	J-Box on side of duct	14	Spare
15	Interior Wallpacks	16	
17	Exterior Recepts	18	Sprinkler System
19	WIT 989 Cameras	20	999FIT907
21	999FIT915	22	999FIT923
23	999FIT932	24	999FIT103
25	999FIT132	26	999FIT203
27	999FIT232	28	999FIT303
29	999FIT323	30	MgCl2 Dosing Pumps
31	Sample Fridge Recept	32	Blower #1
33	Roof Exhaust Fan	34	Blower #2
35	Baseboard Heat	36	Blower #3
37		38	999FIT(114, 214, 314)
39	PLC CAB1	40	CWS PLC
41	PLC CAB2	42	Caustic Pumps & Panel

Voltage LL: 208
 Bus Rating: 200 KAIC
 Voltage LG: 120 / 100A

SC Rating SYM: 10 KAIC
 Phase / Wire: 3PH / 4W
 Enclosure: NEMA 1

MCPB	WESTINGHOUSE		1200 AMPS 480V 3PH		
	Location: RSPS				
Bucket NO.					
1B	PANEL LHP FEEDER				
1E	PANEL LHP				
1H	BLANK				
1K _L	SPARE				
1K _R	GATE OPERATOR "B"				
1M _L	CRANE				
1M _R	WELDING OUTLETS				
2C	ROOF VENTILATOR				
2E	PHPB				
2F	BLANK				
2J	SPARE				
2M	BLANK				
3B	MAKE UP AIR HEAT H-3-1				H-3-1
3D _L	HOIST H-201				H-201
3D _R	HOIST H-203				H-203
3F _L	HOIST H-202				H-202
3F _R	SPARE				
3M	BLANK				
Back to the Drawing					

MCTA	WESTINGHOUSE		1200 AMPS 480V 3PH		
	Location: Liquids Ctrl				
Bucket NO.					
1M	BLOWER #4				
2M	BLOWER #3				
3M	BLANK				
4C	SPARE				
4F	BLANK				
4J	SPARE STARTER				
4M	BOOSTER PUMP BPF-25/28				
5C	SPARE				
5F	SPARE				
5J	SPARE STARTER				
5M	BLANK				
6C	BLANK				
6F	BLANK				
6G	BLANK				
6M	BLANK				
Back to the Drawing					

MCTC	WESTINGHOUSE				
			SUPPLY 1200A 480V 3PH		
			SEC 2, 4-12 300 AMPS		
	Location: Liquids Ctrl				
Bucket NO.					
1M	SPARE				
2M	SPARE				
3M	SPARE				
4M	SPARE				
5M	SPARE				
6D	TIMER CLOCK				
6H	SPARE (USED FOR LV MAINT)				
6M	SPARE				
7D	SPARE STARTER				
7H	SPARE STARTER				
7M	SPARE STARTER				
8D	SPARE STARTER				
8H	SPARE STARTER				
8M	SPARE				
9E	SPARE STARTER				
9J	SPARE W/ TIMER				
9M	BLANK				
10B _L	BLOWER 6003 BUTTER FLY VALVE FEEDER				
10B _R	BLOWER 6004 BUTTER FLY VALVE FEEDER				
10E	SPARE				
10J	SPARE W/ TIMER				
10M	BLANK				
11B _L	BLOWER 6001 BUTTER FLY VALVE FEEDER				
11B _R	BLOWER 6002 BUTTER FLY VALVE FEEDER				
11E	SPARE				
11J	BLANK				
11M	SPARE				
12D	SPARE STARTER				
12H	SPARE STARTER				
12M	SPARE				
Back to the Drawing					

MCTE	WESTINGHOUSE				
			SUPPLY 1200A 480V 3PH		
	Location: Liquids Ctrl				
Bucket NO.					Tag
1F	BLANK				
1M	BLANK				
2B	SECONDARY CLARIFIER #1 CD-6101				CD-6101
2D	SECONDARY CLARIFIER #2 CD-6201				CD-6201
2F	WASH WATER BOOSTER PUMP - 2				
2H	SURFACE WASH BOOSTER PUMP				
2K	HOT WATER HEATER N12				
2M	BLANK				
3F	SPARE				
3M	SPARE				
4G	CHLORINE ROOM EXHAUST AIR FAN E-6-1				E-6-1
4H	BLANK				
4M	BLANK				
5F	PRIMARY CLARIFIER NO. 1 DRIVE				
5M	PRIMARY CLARIFIER NO. 2 DRIVE				
6C	PRIMARY CLARIFIERS TUNNEL EXHAUSTER E-2-1				E-2-1
6F	FILTER BASIN TUNNEL EXHAUSTER E-2-2				E-2-2
6J	CHLORINE CONTACT BASIN TUNNEL EXHAUSTER E-4-1				E-4-1
6M	LIME SLAKING ROOM EXHAUST AIR FAN E-10-1				E-10-1
7C	LIQUIDS TUNNEL HEATER H-2-1				H-2-1
7F	FILTER TUNNEL HEATER H-2-2				H-2-2
7J	SPARE				
7M	CONTROL BUILDING BASEMENT EXHAUSTER E-1-1				E-1-1
8F	SURGE BASIN RETURN PUMP NO. 1 & 2 SPEED CONTROL (OBSOLETE)				
8M	L.V. SWITCHING RELAYS AND TRANSFORMER				
9B	CHEMICAL SLUDGE PUMP CSP-7301				CSP-7301
9D	FLOCCULATOR FL-7301				FL-7301
9M	SURGE BASIN RETURN PUMP NO. 1 (GONE)				
10D	CHEMICAL SLUDGE PUMP CSP-7203				CSP-7203
10M	SURGE BASIN RETURN PUMP NO. 2 (GONE)				
11D	CHEMICAL SLUDGE PUMP CSP-7103				CSP-7103
11M	SPARE				
12D	CSP-7202 (NO LABEL)				CSP-7202
12K	SPARE				
12M _L	FLOCCULATOR FL-7101				FL-7101
12M _R	FLOCCULATOR FL-7201				FL-7201
13D	CHEMICAL SLUDGE PUMP CSP-7102				CSP-7102
13J	SPARE				
13M	BOOSTER PUMP #2 NPW-602				NPW-602
14D	CHEMICAL SLUDGE PUMP CSP-7201				CSP-7201
14J	SPARE				
14M	CLARIFIER DRIVE CD-7301				CD-7301
15E	PRIMARY SLUDGE PUMP NO. 2 (OBSOLETE)				
15J	CHEMICAL SLUDGE PUMP CSP-7101				CSP-7101
15M	CHEMICAL SLUDGE PUMP CSP-7303				
16C	CHEMICAL SLUDGE PUMP CSP-7302				
16J	SPARE				
16M	CLARIFIER DRIVE CD-7302				
17F	CLORINE BASIN COLLECTOR NO. 1 (GONE)				
17M	SPARE				
18B	DUCT HEATER				
18F	SPARE				
18M	SPARE				
19F	SPARE				
19K	BLANK				
19M	ROOF AIR CONDITIONER				
20C	SPARE				

20J	SPARE	
20K	BLANK	
20M _L	SPARE	
20M _R	WELDING OUTLETS	
21B	PANEL LLTB FEEDER	
21D	PANEL LHT FEEDER	
21J	PANEL LJT	
21K	BLANK	
21M	SPARE	
22B	TRANSFORMER T-16 BREAKER	
22E	PANEL LLTA BREAKER	
22M	PANEL LLTA	
Back to the Drawing		

MCTF	WESTINGHOUSE		SUPPLY 1200A 480V 3PH		
	Location: Liquids Ctrl				
Bucket NO.					Tag
1F	SPARE				
1M	SPARE				
2F	SPARE				
2M	SPARE				
3F	CLARIFIER DRIVE CD-7101				CD-7101
3M	CLARIFIER DRIVE CD-7201				CD-7201
4F	CLARIFIER DRIVE CD-7102				CD-7102
4M	CLARIFIER DRIVE CD-7202				CD-7202
5B	XFMR-6024				
	PP-6024				
	1 S.E.D.S. HEAT TAPE #1				
	2 S.E.D.S. HEAT TAPE #3				
	3 S.E.D.S. HEAT TAPE #2				
	4 S.E.D.S. HEAT TAPE #4				
	5 S.E.D.S. HEAT TAPE #5				
	6 CEM 6201 HEAT TAPE				
	7 S.E.D.S HEAT TAPE #6				
	8 CEM 6101 HEAT TAPE				
	9				
	10 VALVE 9901				
	11 SEC #1 pH METER				
	12 FIT-9902 AND BV-9902				FIT-9902, BV-9902
	13 SEC #2 pH METER				
	14 FIT-9901				FIT-9901
	15 PRI SLUDGE FLOW				
	16 FIBER POWER				
	17 SAMPLE SEC #2				
	18 FIT-40205 AND FIT-40305				FIT-40205, FIT-40305
	19 SAMPLE SEC #2				
	20 CHEM SCAN				
	21 REUSE DISINFECTION HYPO PUMP 1 09P3301				09P3301
	22 SPARE				
	23 REUSE DISINFECTION HYPO PUMP 2 09P3302				09P3302
	24 SPARE				
	25 EFFLUENT DISINFECTION HYPO PUMP 1 07P3301				07P3301
	26 SPARE				
	27 EFFLUENT DISINFECTION HYPO PUMP 2 07P3302				07P3302
	28 SPARE				
	29 EFFLUENT DISINFECTION HYPO PUMP 3 07P3303				07P3303
	30 SPARE				
	31 EFFLUENT DISINFECTION HYPO PUMP 4 07P3304				07P3304
	32 SPARE				
	33 SPARE				
	34 SPARE				
	35 SPARE				
	36 SPARE				
	37 SPARE				
	38 SPARE				
	39 SPARE				
	40 SPARE				
5B	XFMR-6024 AND PP-6024				
5K	PRIMARY SLUDGE PUMP PSP-4001				PSP-4001
5M	BLANK				
6J	SPARE				
6M	SPARE				
7F	SPEED CONTROLLER PLANT WATER PUMP NO. 1 & 2				
7M	BLANK				
8J	SPARE				
8M	SPARE				
9H	PRIMARY SLUDGE PUMP PSP-4003				PSP-4003
9M	BLANK				
10H	SPARE				
10M	BLANK				
11F	SPARE				
11M	SPARE				
12H	PRIMARY SLUDGE PUMP PSP-4002				PSP-4002
12M	BLANK				

[Back to the Drawing](#)

DIGESTER SLUDGE HOLDING TANK 2 MIXER OIL PUMP
DIGESTER SLUDGE HOLDING TANK 2 MIXER
DIGESTED SLUDGE PUMP 2
AUTOMATIC TRANSFER SWITCH
DIGESTER 4 MIXER OIL HEATER
DIGESTER SLUDGE HOLDING TANK 2 MIXER OIL HEATER
HVAC LCP CONTROL PANEL
WASTE GAS BURNER
AIR DRYER
GAS DETECTION ANALYZER
COMBUST. AIR SUPPLY FAN
DIGESTER 4 HEAT TRACE
DIGESTER HOLDING TANK 2 HEAT TRACE
HOT WATER BOILER 2
20FIT10403
WASTE GAS BURNER FLOW METER
DIGESTER 4 GAS FLOW METER
MOD HEAT TIMER FOR BOILERS
DIGESTER FEED SLUDGE GRINDER 2
SLUDGE RECIRCULATION PUMP2
PRIMARY HEAT LOOP PUMP 2
BOILER 2 RECIRCULATION PUMP 2
BOILER 2 RECIRCULATION PUMP 2
DIGESTER CONTROL BUILDING EXHAUST FAN 2
DIGESTER CONTROL BUILDING EXHAUST FAN 1
BUILDING HEAT RECIRCULATION PUMP

