



Flood of Information

Nancy S. Bush, MBA, MA
Director
Clackamas County Dept. of Disaster Management

Gari Johnson
Community Relations Specialist
Water Environment Services

Background

- Flood events
- Managing Flood Risk
- Sandy River Sustainable Flood Group

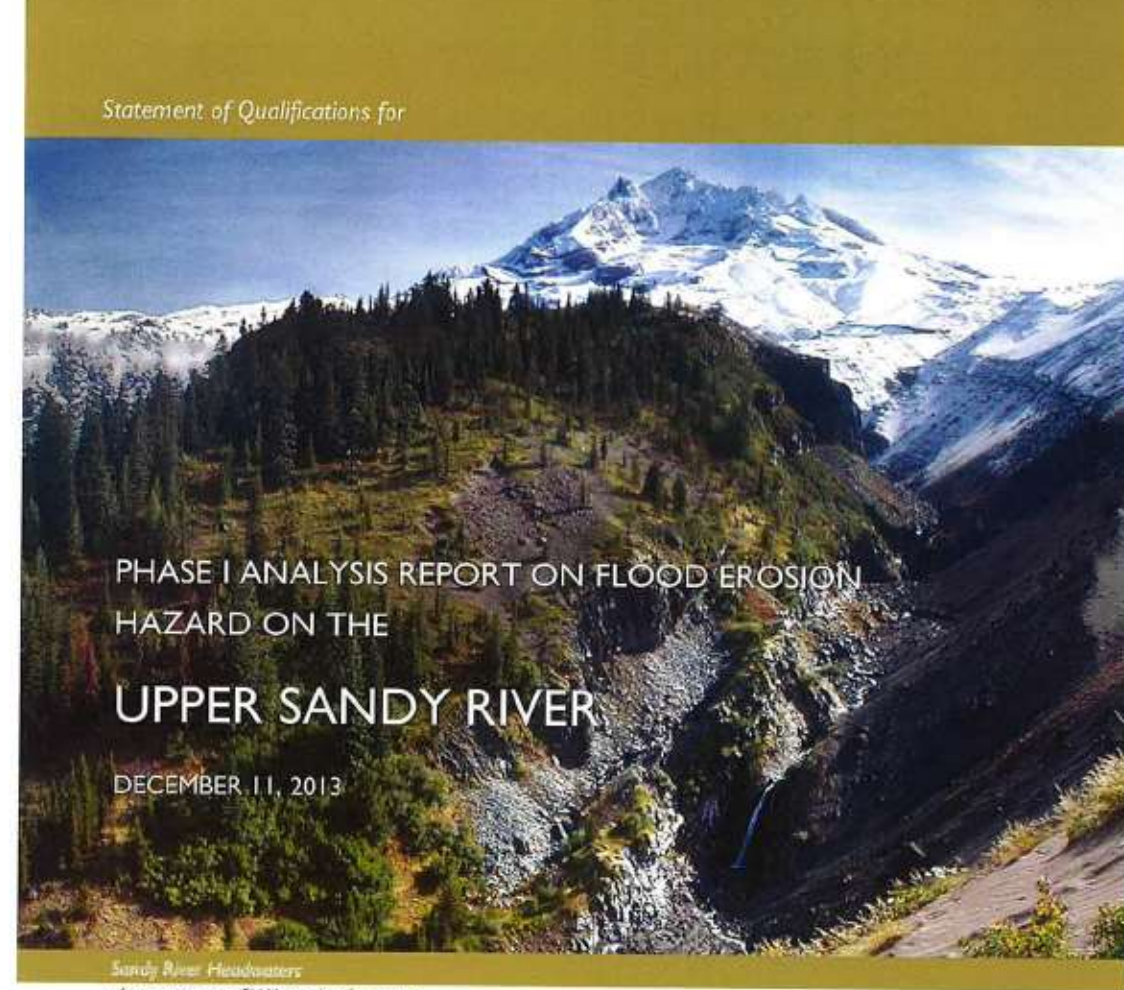




Sandy River at Zig Zag Village January 22, 2011

Flood Erosion Study

- Baseline of analysis on channel migration hazard
- Basis for future decisions/policy
- Transparent process



Sandy River Headwaters
photo courtesy of Wikimedia Commons

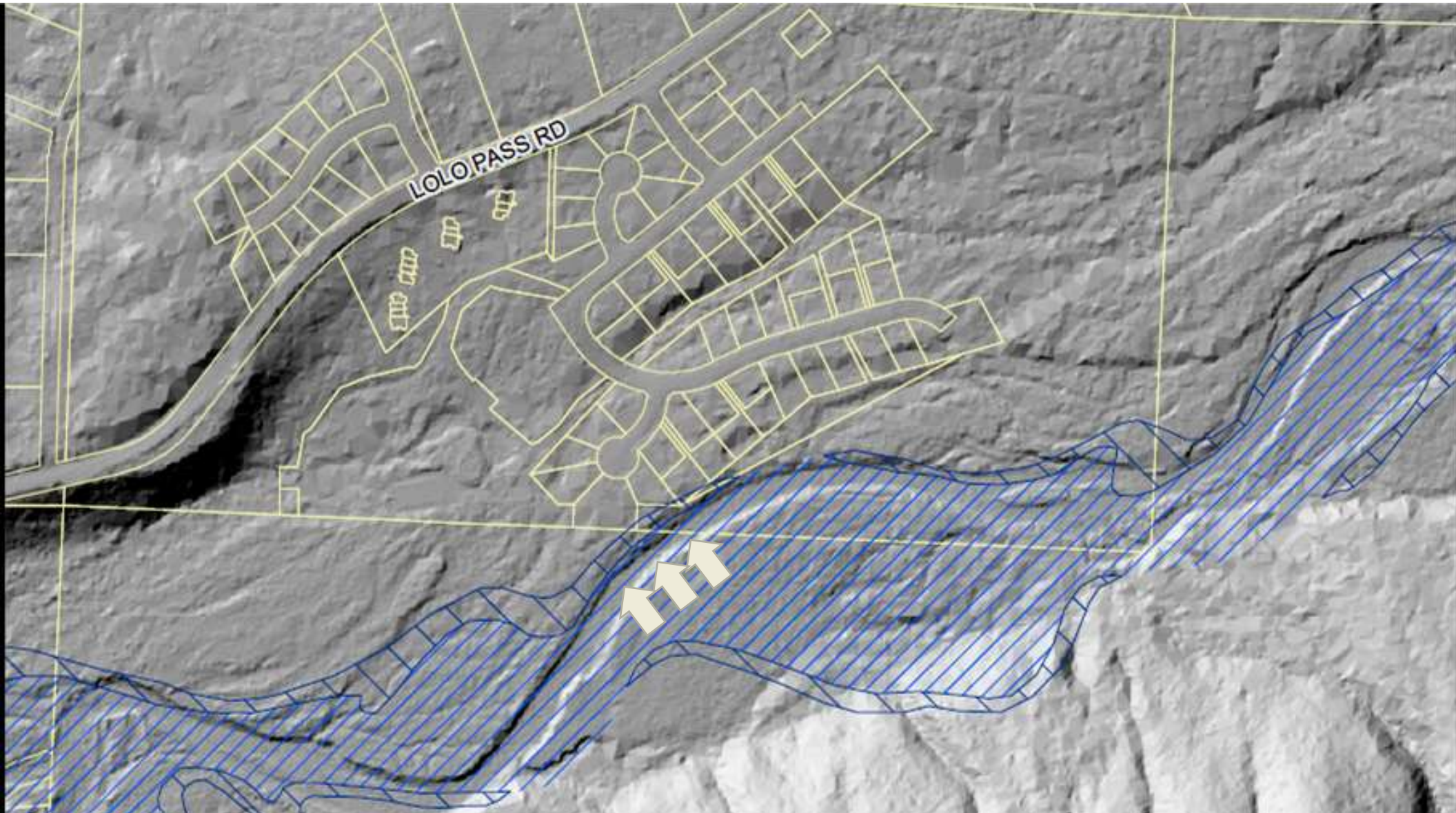
Submitted to:
Mr. Lane Miller
Clackamas County
Purchasing
Public Services Building
2051 Kaen Road
Oregon City, OR 97045



19480 W. Campbell Street, Bend, OR 97702 T: (541) 678-1412

Channel Migration **hazards**





The projection used in the preparation of this map, NAD 83 UTM 12QD, does not differ significantly from the projection used in the preparation of the 2008 FEMA Flood Insurance Rate Study (FIRI) maps. However, the projection used in the preparation of the 2008 FEMA Flood Insurance Rate Study (FIRI) maps may result in slight vertical differences in map features across jurisdiction boundaries. These differences do not affect the accuracy of this map.

Flood elevations on this map are referenced to the North American Vertical Datum of 1988. These flood elevations may be compared to elevations and ground elevations obtained from the National Geospatial Intelligence Agency (NGA) and the North American Vertical Datum of 1988. For information regarding conversion between the National Geospatial Intelligence Agency (NGA) and the North American Vertical Datum of 1988, visit the National Geospatial Intelligence Agency website at www.nga.mil.

NOAA Information Services
 NOAA, NWS/NOI
 National Geospatial Survey
 4000 S. 4000
 4100 Shawnee Highway
 Shawnee, Oklahoma 74781
 800.755.4747

**DRAFT FLOOD ZONES -
 NOT FOR OFFICIAL USE**

Zig Zag Village

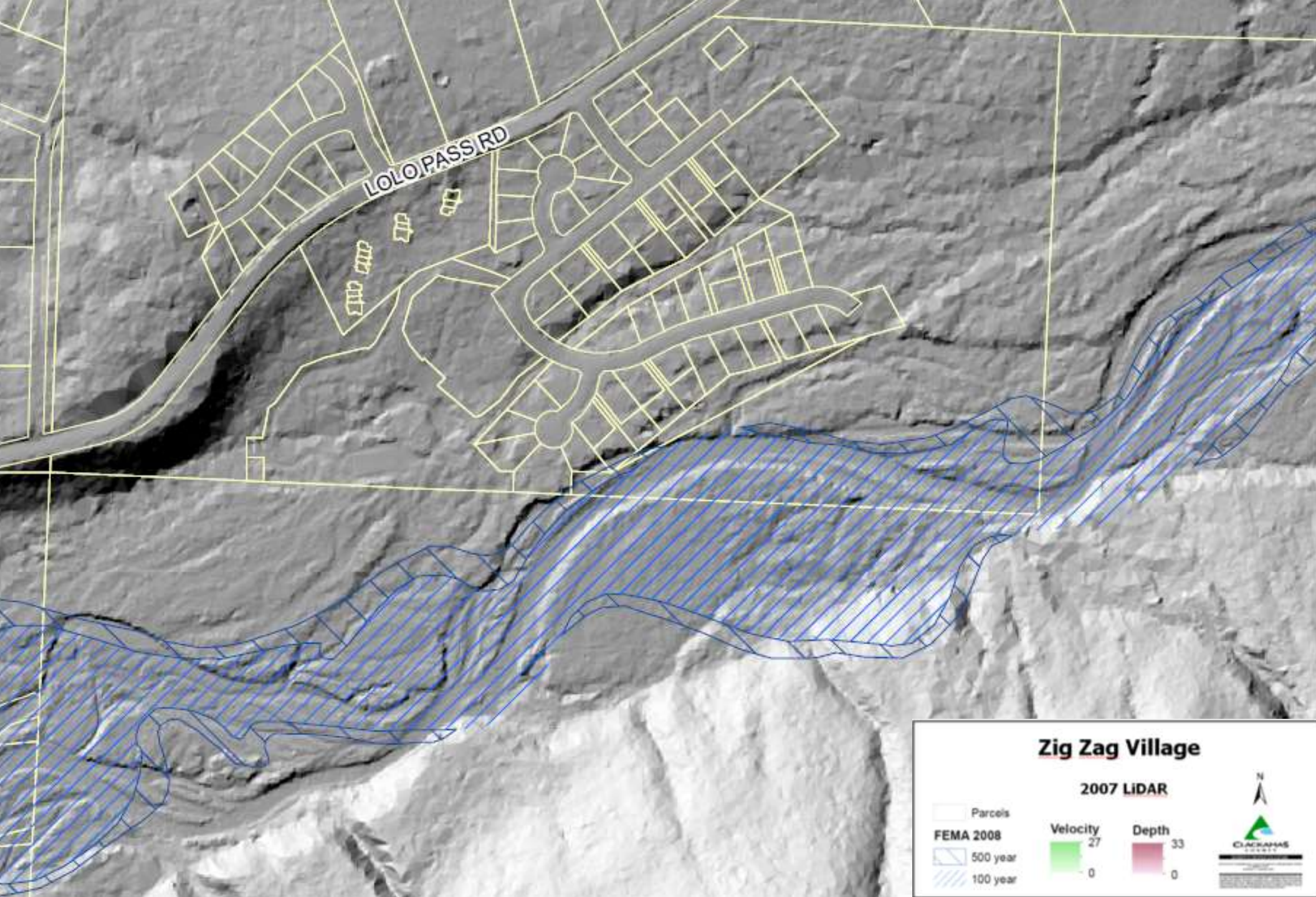
2007 LIDAR

Parcels	Velocity	Depth
FEMA 2008 500 year		
100 year		

N

CLARKMAS





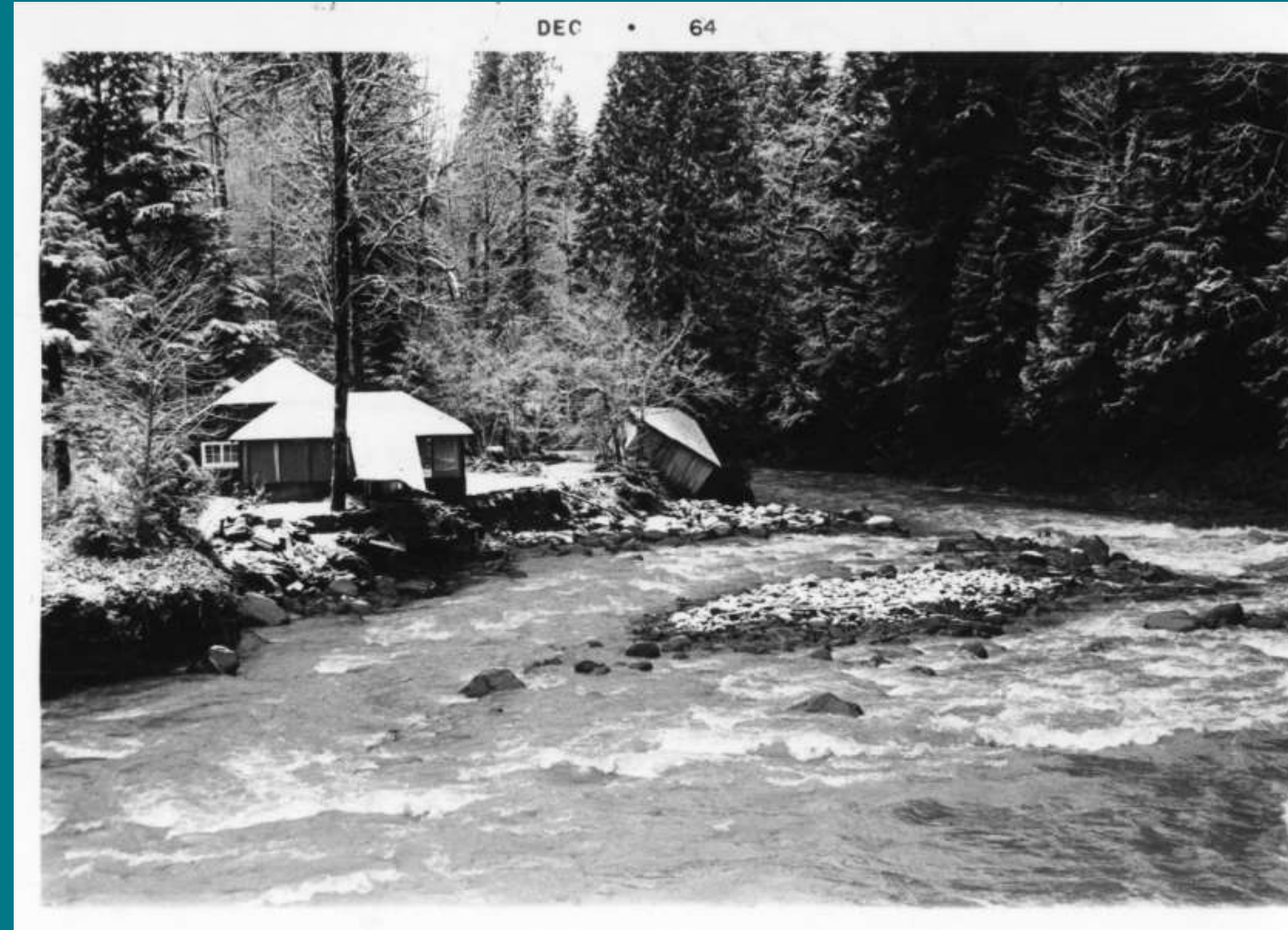
The projection used in the preparation of this map was NAD 83 (North American Datum 1983). The horizontal datum was NAD 83. The vertical datum was NAVD 83. The map was prepared using GIS software. The map is a draft and is not for official use. It is intended for informational purposes only. The information on this map is not to be used for any other purpose. The information on this map is not to be used for any other purpose. The information on this map is not to be used for any other purpose.


NOAA Information Services
 NOAA, 1996/2002
 National Geographic Society
 10000 GPO, 2002
 U.S. Department of the Interior
 Bureau of Land Management
 1000 E. 17th Avenue
 Denver, Colorado 80202

DRAFT FLOOD ZONES - NOT FOR OFFICIAL USE

The '64 Flood video

Upper Sandy River Basin
December 1964





**“We want
people to
know how to
protect
themselves”**

“This is a great opportunity for county residents concerned about flooding and securing their homes or property during the winter,” said Nancy Bush, director of Clackamas County Disaster Management. “The county and our partners will share some great resources and answer questions to help people plan ahead. We want people to know how to protect themselves.”

Lower Lolo Pass Road Area January 2011

PHASE

01

Flood of Information events

Resources and partnerships

- FEMA (Federal Emergency Management Agency)
- FIRM (Flood Insurance Rate Mapping)
- Oregon Emergency Management Agency
- Fire Districts
- Sustainability Office
- Transportation Maintenance Division



**How do you get
people to your
event?**

Outreach

- Advertisements
- Postcards
- Emails
- Articles
- Websites
- Social media
- Media releases
- Phone calls
- eNewsletters



A Flood of Information IV:
Preparing for Winter along the Sandy River Workshop

Featuring

Lolo Pass Road Access Alternatives Analysis Open House
Saturday, Oct. 24, 2015 - Doors open from 9am to 12:30pm
Resort at the Mountain, Welches, Lolo Pass Room

Join local and regional experts to learn what we can do together to make winter along the Sandy River and its tributaries safer. Most material and talks are relevant to ALL County residents preparing for winter weather conditions.

Co Sponsors:



Open House

- Guest Speakers
- Presentations
- Exhibits
- Maps
- Resources
- Insurance
- Treats and prizes!



Sharing the
information
helps
everyone



PHASE

02

Flood of Information – urban event

Expanded reach

- Sandy River and tributaries
- Clackamas River and tributaries
- Willamette River and tributaries

Do you live near a stream?

A Flood of Information 2016:
Preparing for Winter along the Rivers Workshops

Sandy River and tributaries		Clackamas River and Willamette River and tributaries
Sept. 24, 9 a.m. to noon		Oct. 1, 9 a.m. to noon
Resort at the Mountain - Lolo Pass Room		Clackamas County Dev. Services Bldg.
68010 E Fairway Ave, Welches 97067		150 Beaver Creek Rd, Oregon City 97045

SAVE-THE-DATES

Flood of Information video



2015 Flood of Information event



Q & A

We want to hear from you and help make a difference in your community.