

Alex Gilbertson
alex.gilbertson@oregonmetro.gov

Dave Elkin
dave.elkin@oregonmetro.gov

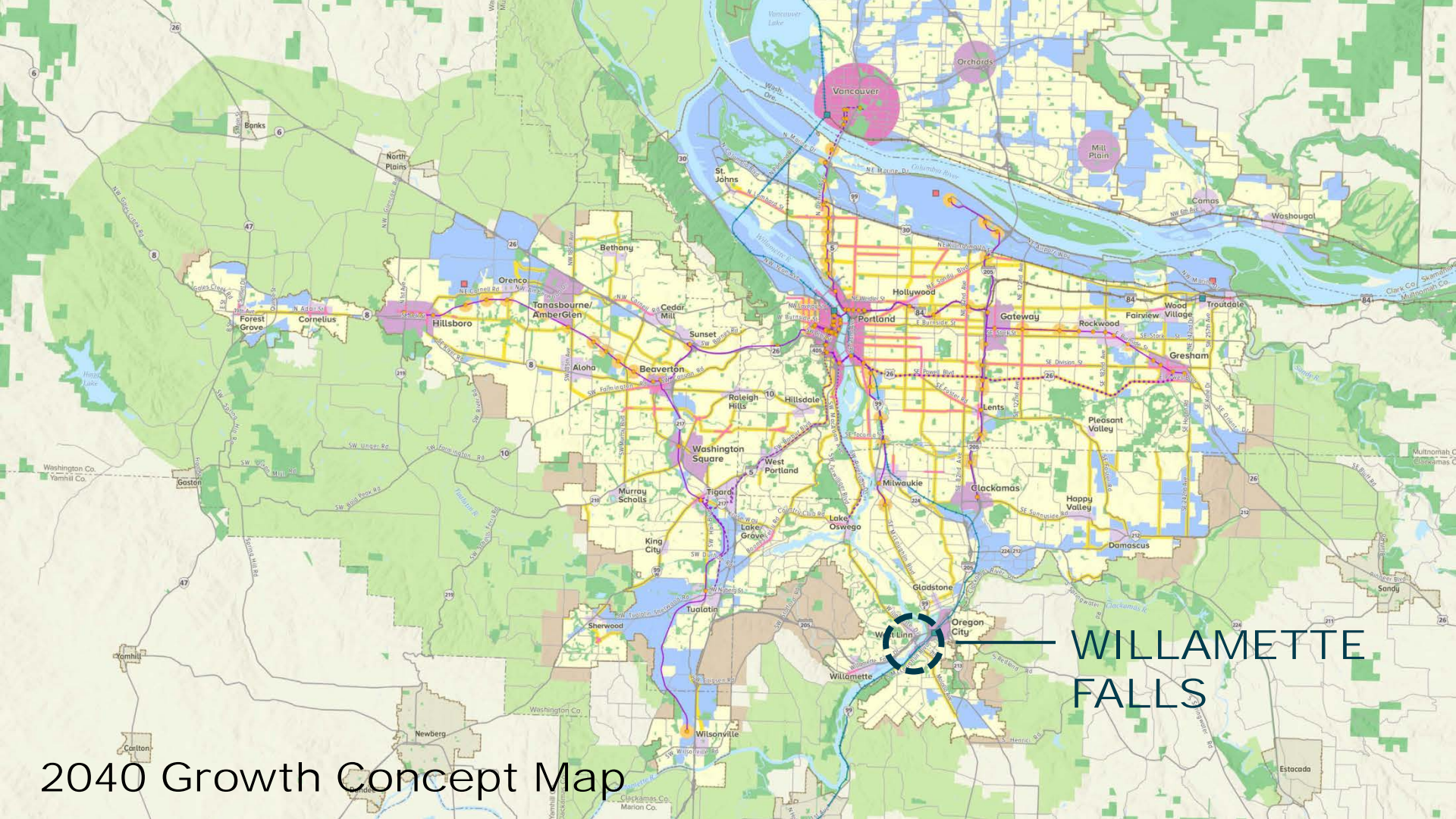


SITE  **THEORY**  **SUMMARY**

**WILLAMETTE
FALLS
RIVERWALK**

**THREE SCALES
OF GREEN
INFRASTRUCTURE**

OVERVIEW



WILLAMETTE
FALLS

2040 Growth Concept Map



**the Willamette Falls
Legacy Project
Public Partners**





PUBLIC ACCESS



**HISTORICAL &
CULTURAL
INTERPRETATION**



**ECONOMIC
REDEVELOPMENT**



**HEALTHY
HABITAT**

RIVER





Dam Construction
March 31, 1943



250 feet

50 m





HIGH WATER MARK



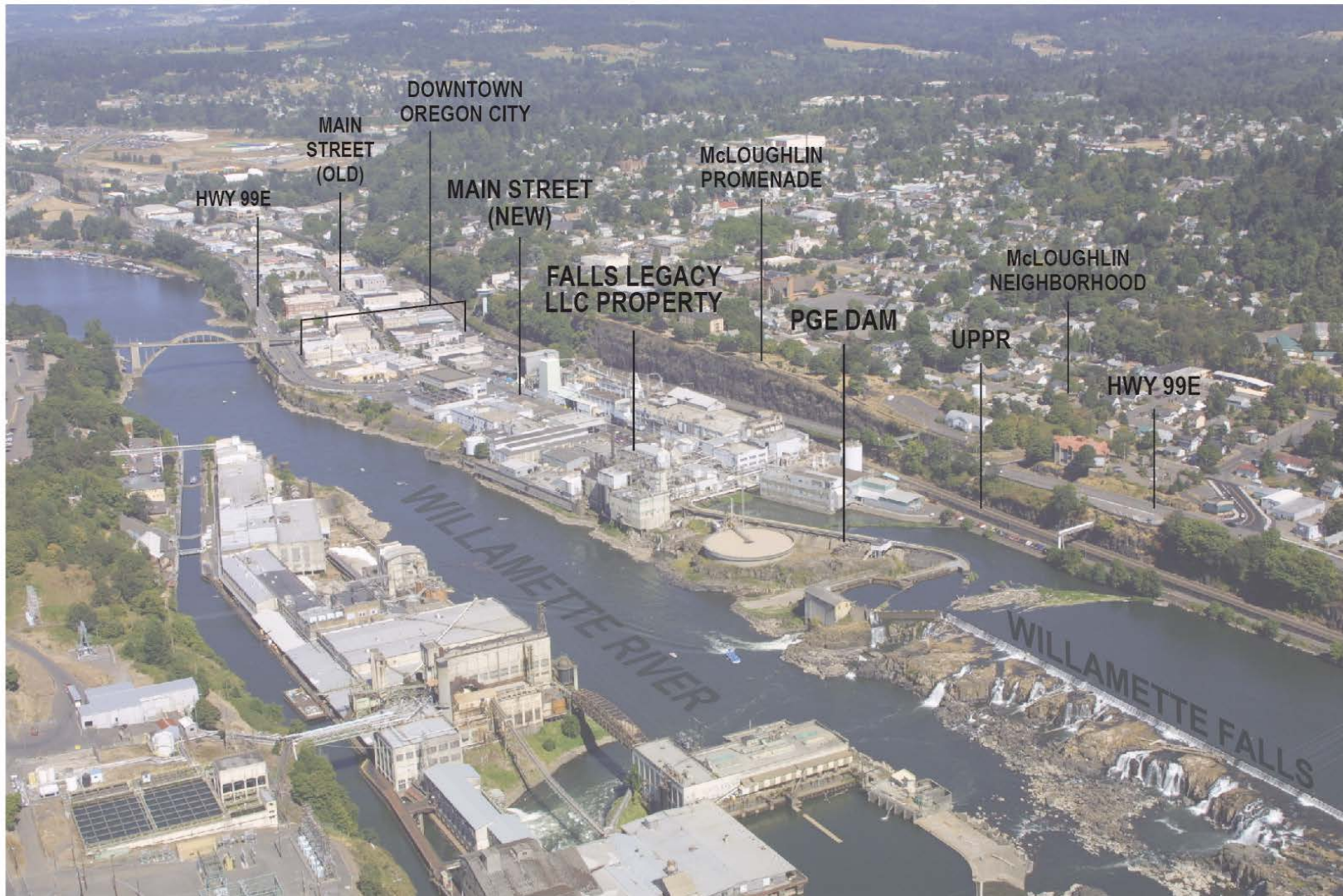
DEC. 25, 1964

MILL

ONLY



SITE



HWY 99E

MAIN STREET (OLD)

DOWNTOWN OREGON CITY

MAIN STREET (NEW)

FALLS LEGACY LLC PROPERTY

McLOUGHLIN PROMENADE

PGE DAM

UPPR

McLOUGHLIN NEIGHBORHOOD

HWY 99E

WILLAMETTE RIVER

WILLAMETTE FALLS



WATER TOWER

MILL
LOG MILL

PAPEL MILL
MILL

MILL
MILL

REFINING ID 1
ID 2
ID 3

REFINING ID 4
ID 5
ID 6

MILL
MILL

DECK
MILL

DECK
MILL

MILL
MILL

WILD
COVERED STORAGE

WILD
COVERED STORAGE

MILL
MILL

MILL
MILL

MILL
MILL

MILL
MILL

MILL
MILL

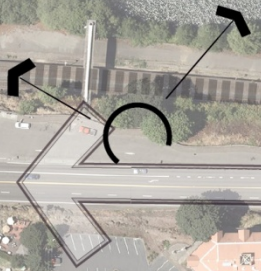
MILL
MILL

MILL
MILL



McLoughlin Promenade

Railroad
Hwy 99E





McLoughlin Promenade

Railroad

Hwy 99E

MILL WILD BOY

MILL WILD BOY

REPAIRS PLANT

REPAIRS PLANT

REPAIRS PLANT

REPAIRS PLANT

REPAIRS PLANT

REPAIRS PLANT

REPAIRS PLANT

REPAIRS PLANT

REPAIRS PLANT

REPAIRS PLANT

REPAIRS PLANT

REPAIRS PLANT

REPAIRS PLANT

REPAIRS PLANT

REPAIRS PLANT

REPAIRS PLANT

REPAIRS PLANT

REPAIRS PLANT

REPAIRS PLANT

REPAIRS PLANT

REPAIRS PLANT

REPAIRS PLANT

REPAIRS PLANT

REPAIRS PLANT

REPAIRS PLANT

REPAIRS PLANT

REPAIRS PLANT

REPAIRS PLANT

REPAIRS PLANT

REPAIRS PLANT

REPAIRS PLANT

REPAIRS PLANT

REPAIRS PLANT

REPAIRS PLANT

REPAIRS PLANT

REPAIRS PLANT

REPAIRS PLANT

REPAIRS PLANT

REPAIRS PLANT

REPAIRS PLANT

REPAIRS PLANT

REPAIRS PLANT

REPAIRS PLANT

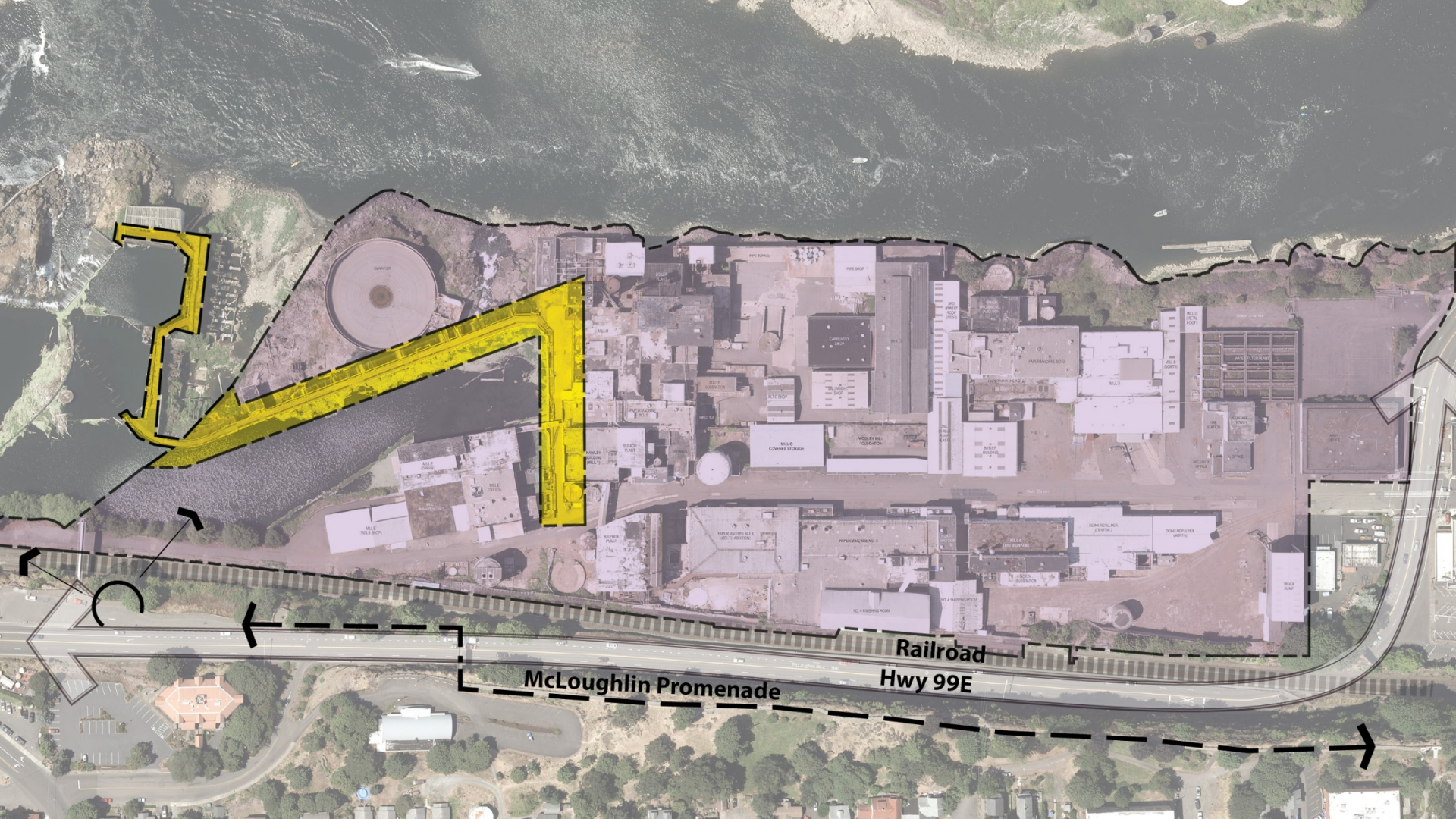
REPAIRS PLANT

REPAIRS PLANT

REPAIRS PLANT

REPAIRS PLANT

REPAIRS PLANT

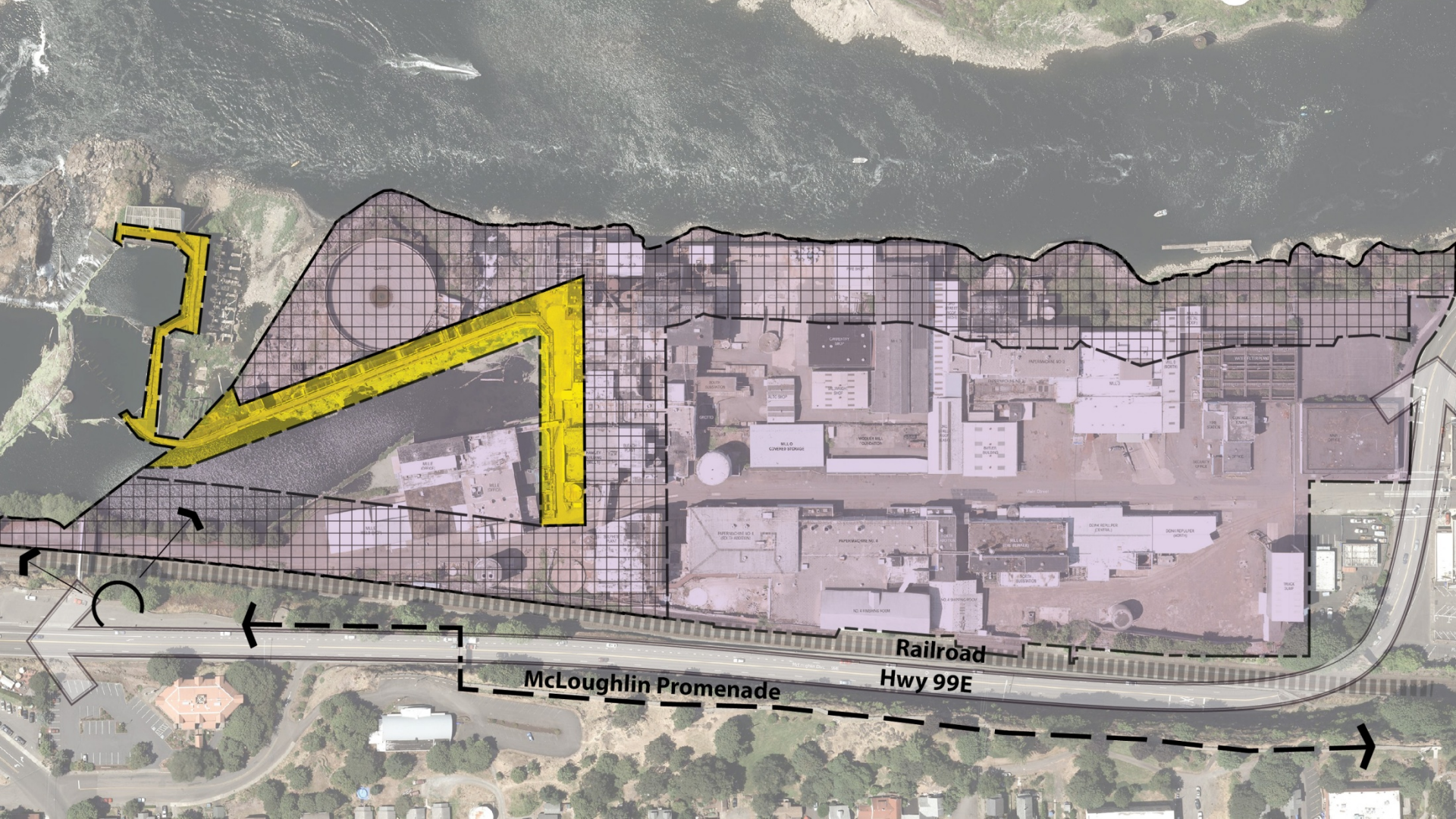


McLoughlin Promenade

Railroad

Hwy 99E





McLoughlin Promenade

Railroad

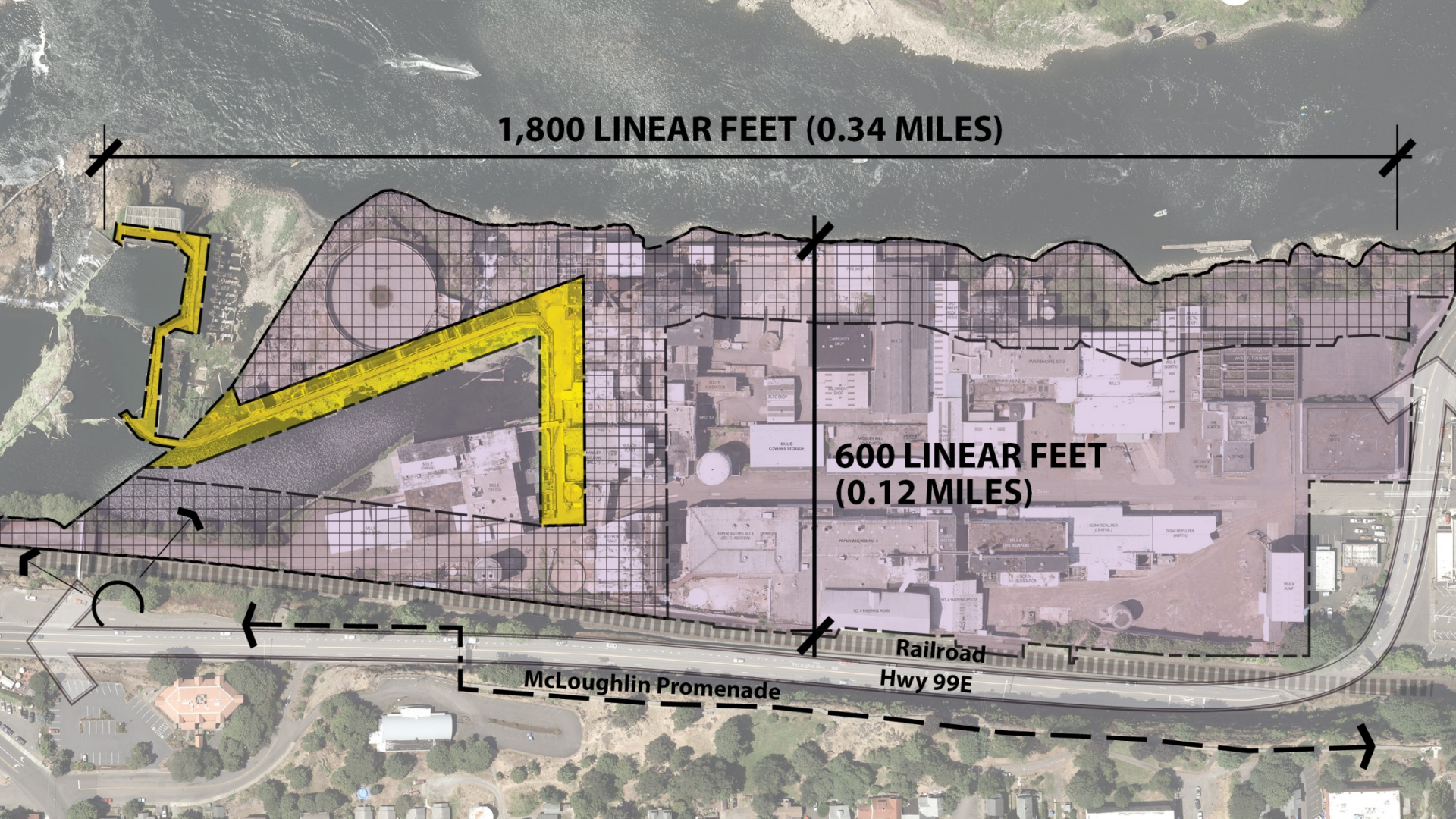
Hwy 99E

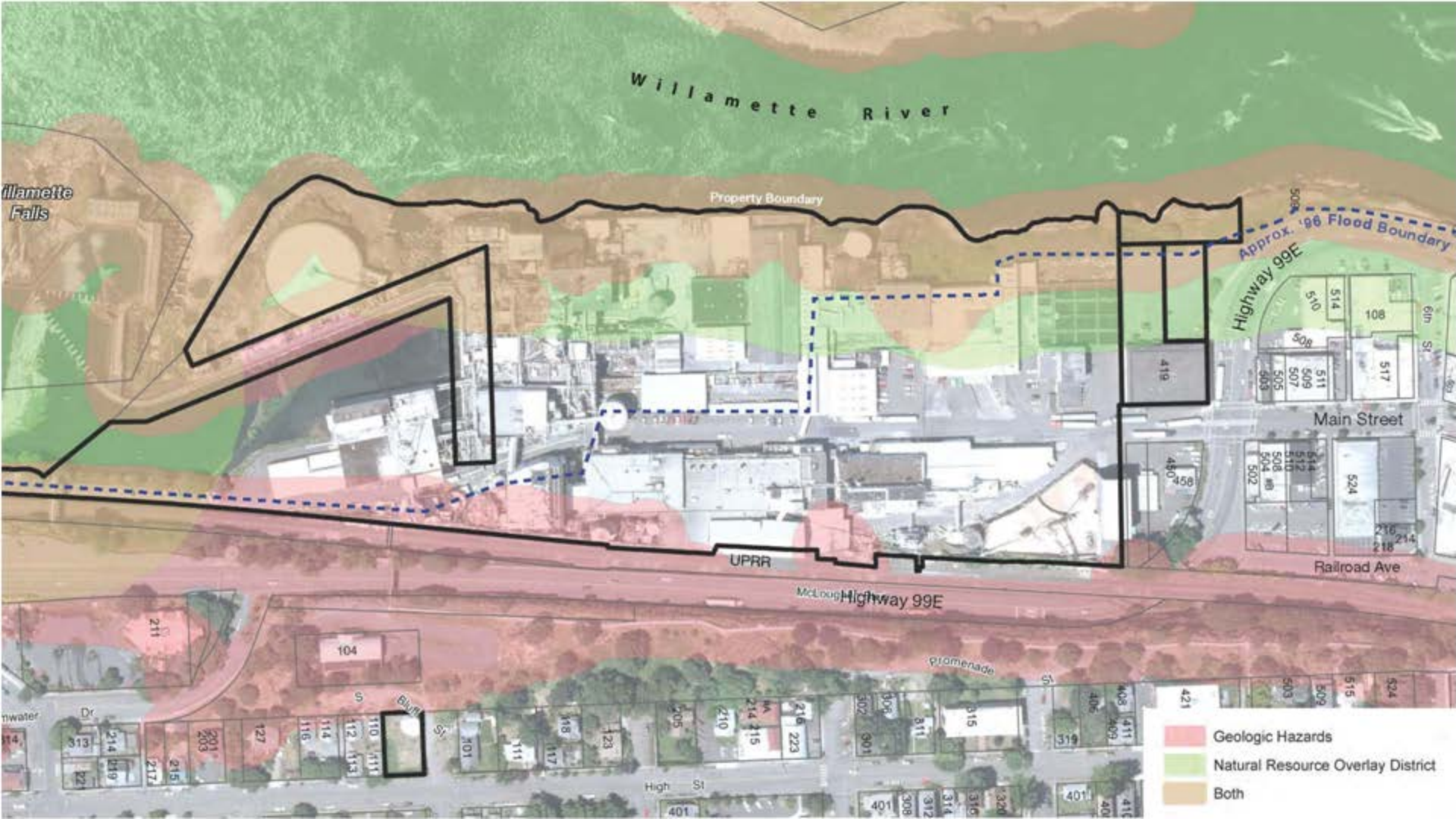
1,800 LINEAR FEET (0.34 MILES)

**600 LINEAR FEET
(0.12 MILES)**

McLoughlin Promenade

**Railroad
Hwy 99E**





Willamette River

Willamette Falls

Property Boundary

Approx. 196 Flood Boundary

Highway 99E

Main Street

Railroad Ave

UPRR

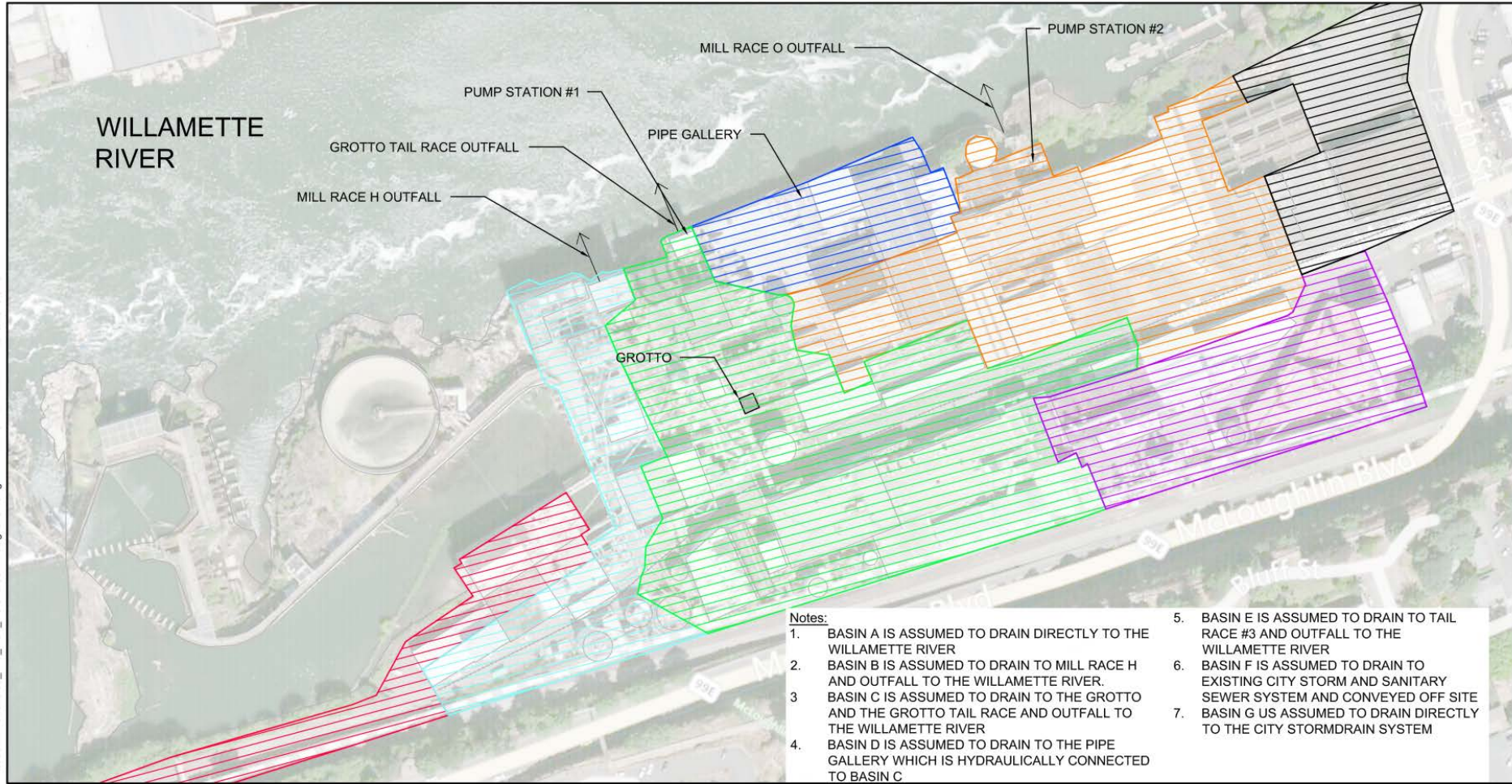
McLough Highway 99E

promenade

High St

Bay St

- Geologic Hazards
- Natural Resource Overlay District
- Both

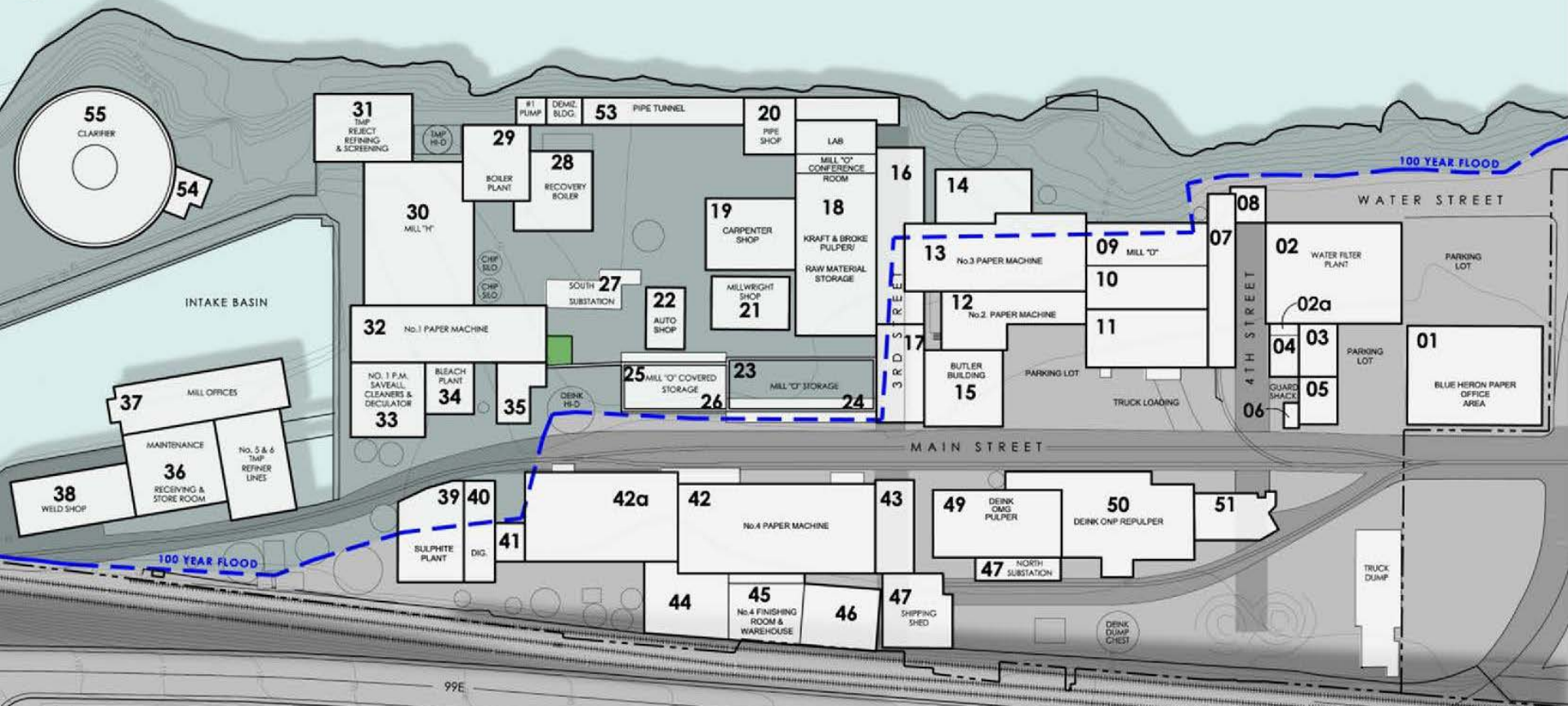


Notes:

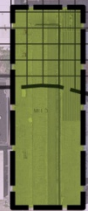
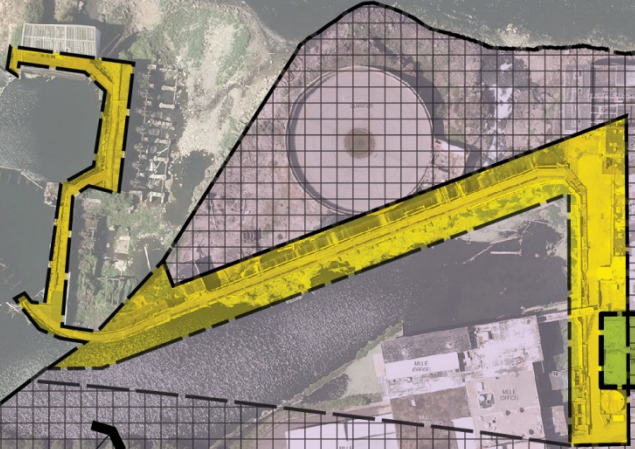
1. BASIN A IS ASSUMED TO DRAIN DIRECTLY TO THE WILLAMETTE RIVER
2. BASIN B IS ASSUMED TO DRAIN TO MILL RACE H AND OUTFALL TO THE WILLAMETTE RIVER.
3. BASIN C IS ASSUMED TO DRAIN TO THE GROTTO AND THE GROTTO TAIL RACE AND OUTFALL TO THE WILLAMETTE RIVER
4. BASIN D IS ASSUMED TO DRAIN TO THE PIPE GALLERY WHICH IS HYDRAULICALLY CONNECTED TO BASIN C
5. BASIN E IS ASSUMED TO DRAIN TO TAIL RACE #3 AND OUTFALL TO THE WILLAMETTE RIVER
6. BASIN F IS ASSUMED TO DRAIN TO EXISTING CITY STORM AND SANITARY SEWER SYSTEM AND CONVEYED OFF SITE
7. BASIN G US ASSUMED TO DRAIN DIRECTLY TO THE CITY STORMDRAIN SYSTEM

BUILDINGS

WILLAMETTE RIVER



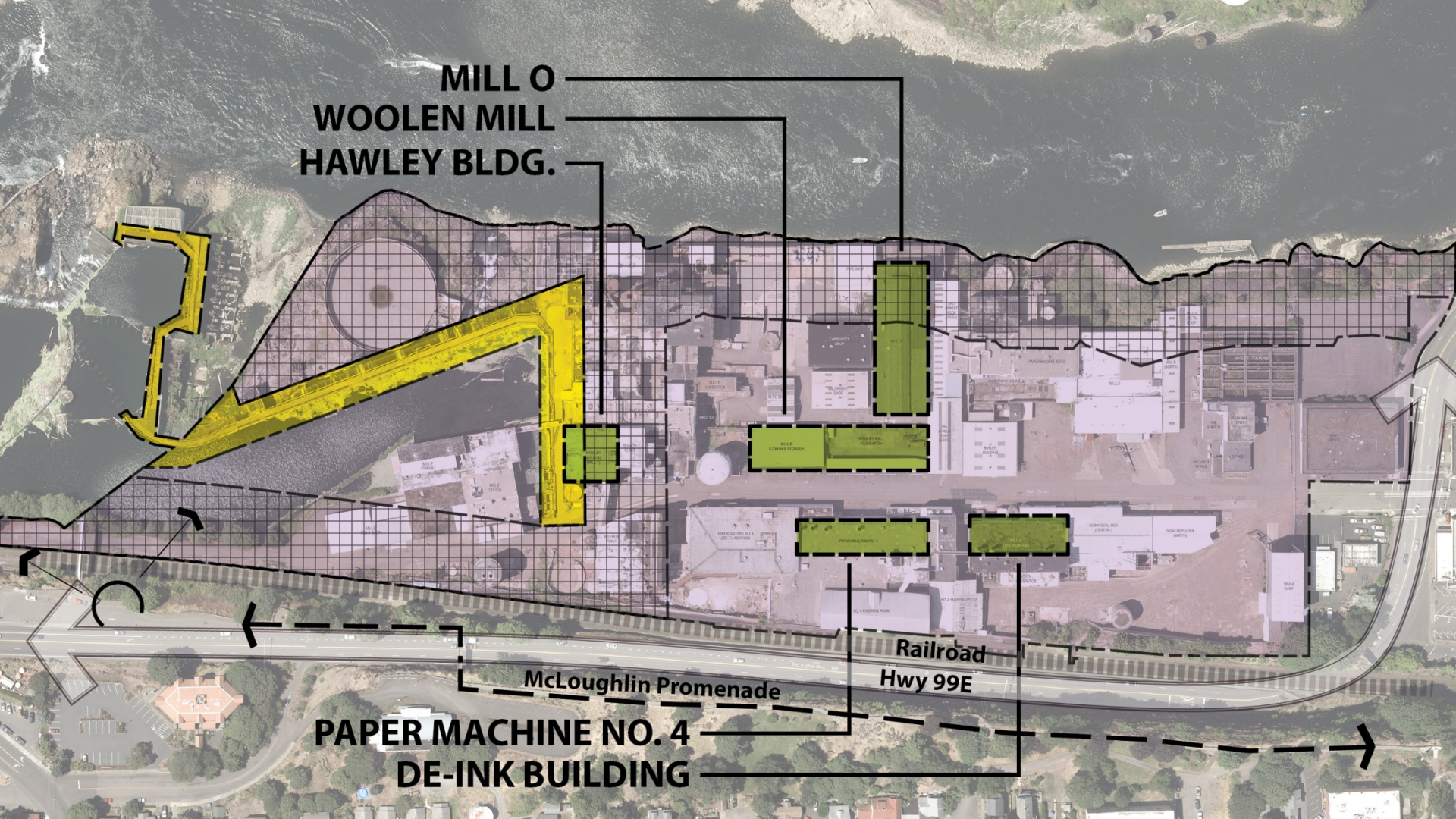
**MILL O
WOOLEN MILL
HAWLEY BLDG.**



McLoughlin Promenade

**Railroad
Hwy 99E**

**PAPER MACHINE NO. 4
DE-INK BUILDING**



SITE PHOTOS















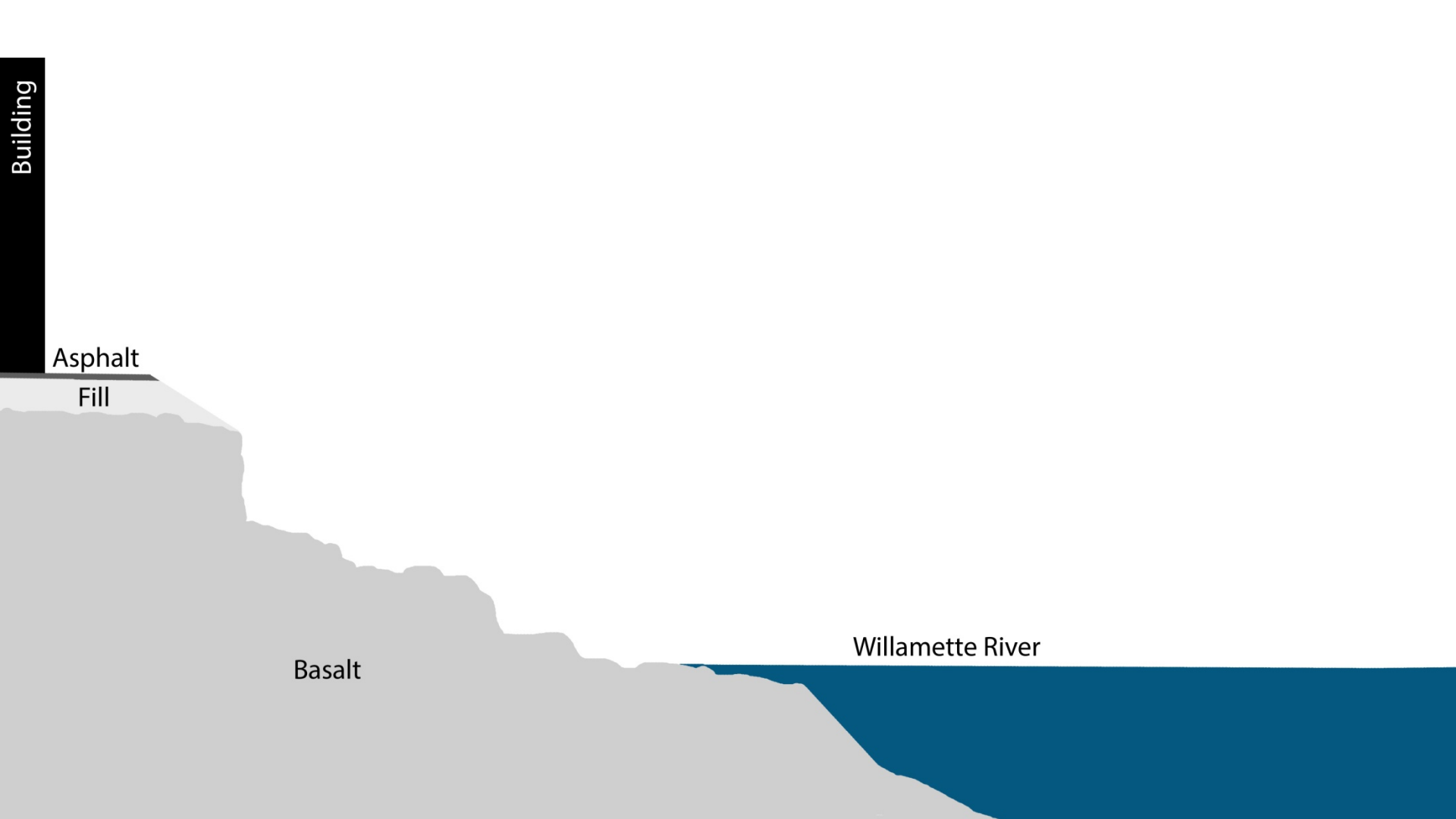
Building

Asphalt

Fill

Basalt

Willamette River



STORMWATER CHALLENGES

- Physical constraints, siting
- Cost
- Economic development
- Phasing

Building

Asphalt

Fill

Basalt

Willamette River

**WHAT ARE THE
OPTIONS?**

WHAT WE CAN'T USE...

- Pervious pavement
- Infiltration Facilities
- Standard piping systems



THE THREE SCALES

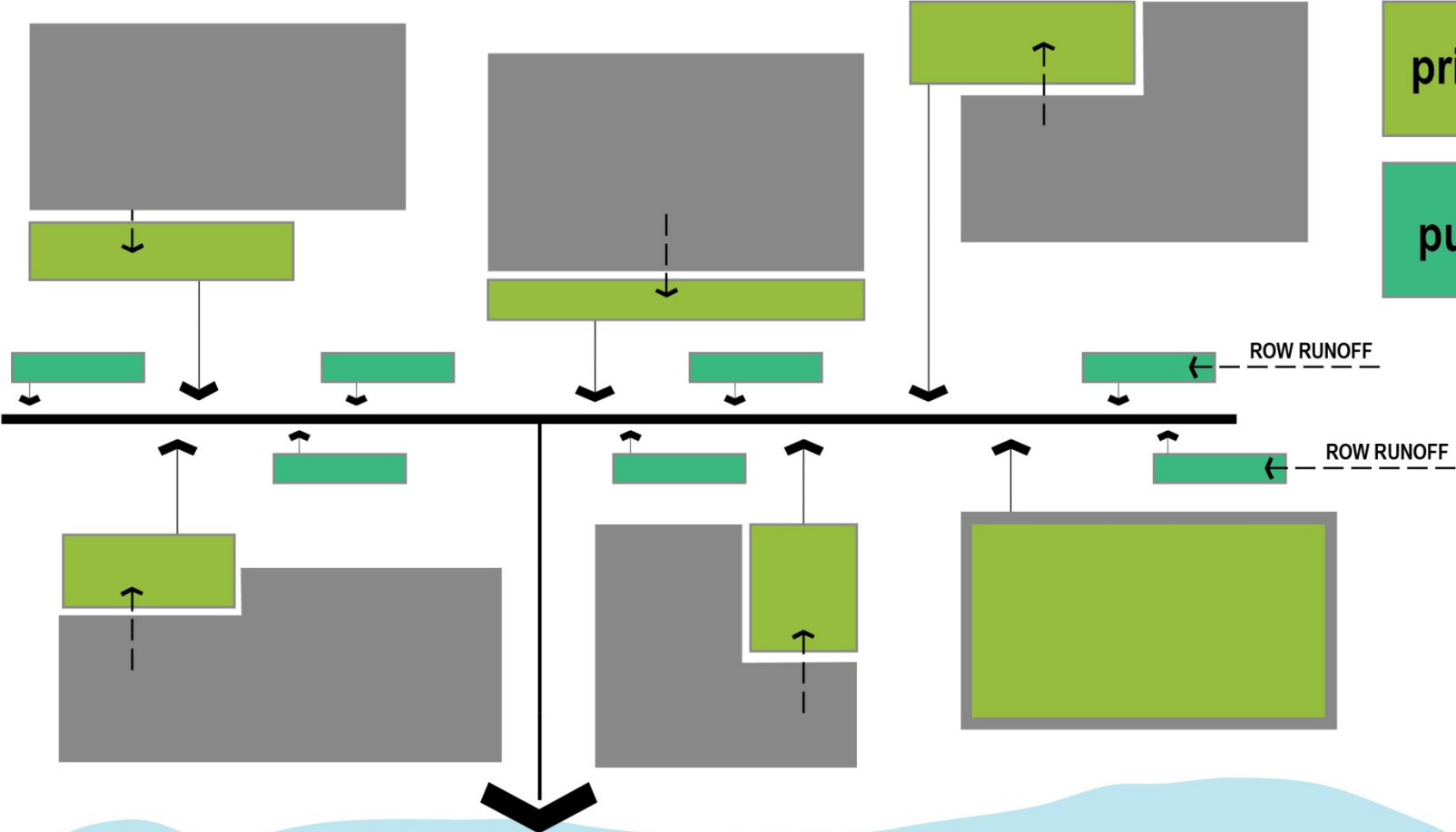
- Site
- Neighborhood
- District

SITE SCALE

- Public and private runoff separate
- Facilities that would work...
 - Small-scale flow-through planters
 - Green roofs
 - How to collect treated stormwater from all the facilities?

SITE SCALE

KEY









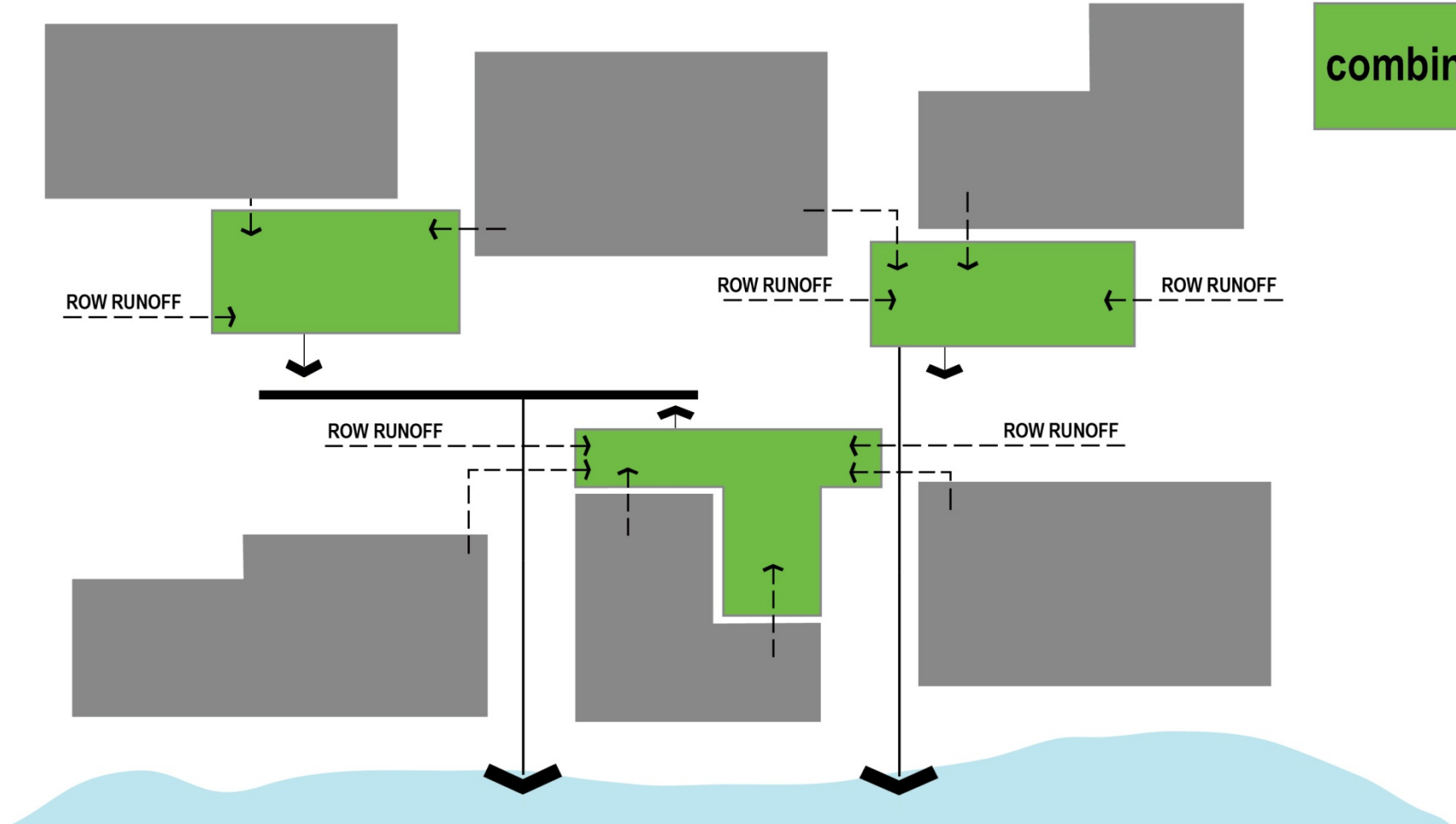


NEIGHBORHOOD SCALE

- Multiple facilities, clustered
- Public and private runoff combined
- Flexibility in siting locations
- Who funds and constructs?

NEIGHBORHOOD SCALE

KEY



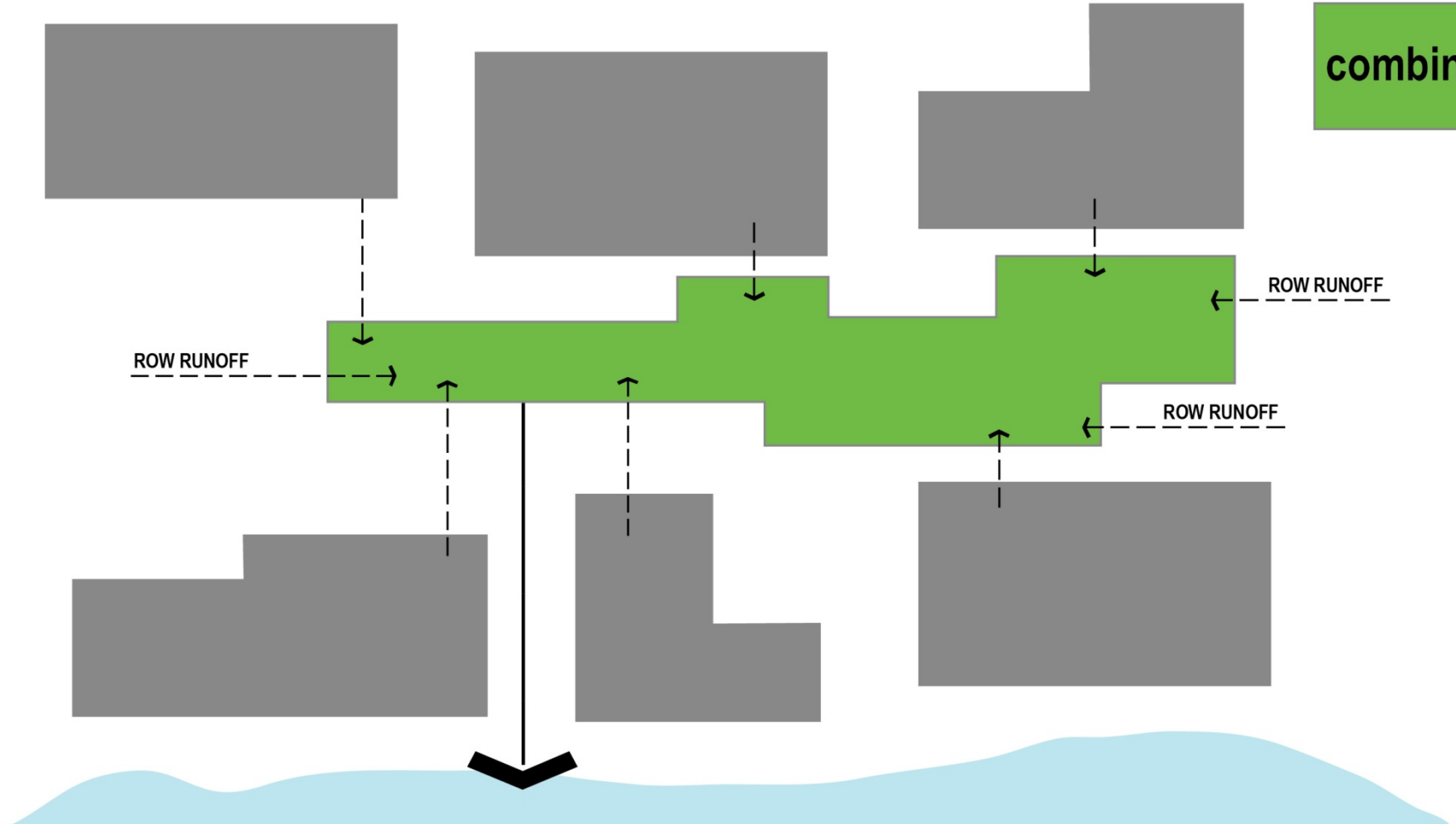


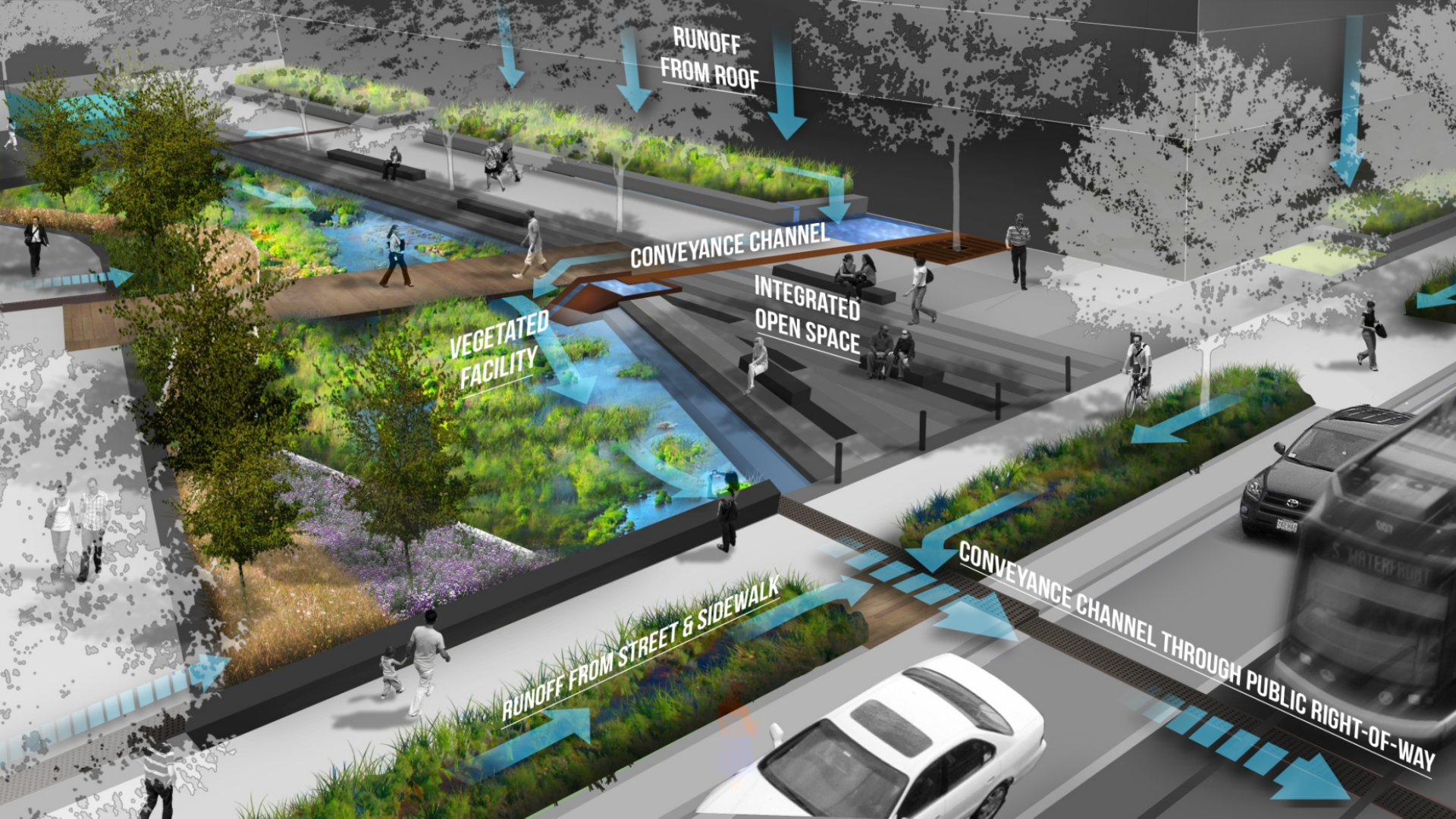
DISTRICT SCALE

- Centralized facility
- Public and private combined runoff
- Maintenance, monitoring, funding
- Retrofitting can be difficult
- Removes barriers to development

DISTRICT SCALE

KEY





RUNOFF FROM ROOF

CONVEYANCE CHANNEL

VEGETATED FACILITY

INTEGRATED OPEN SPACE

RUNOFF FROM STREET & SIDEWALK

CONVEYANCE CHANNEL THROUGH PUBLIC RIGHT-OF-WAY



SUMMARY

- Neighborhood scale is appropriate
- Project will be done in phases, need flexibility in management of runoff
- Surface conveyance where necessary (maybe everywhere!)

SUMMARY

- May need to consider unique solutions
- Site complexity requires that facilities be integrated into site improvements

SAVE THE DATE

See the Preferred Design!

June 3, 2017

OMSI, Portland

www.rediscoverthefalls.com



THANK YOU!