

Clackamas Community College Evacuation Plan



Education That Works



Purpose

It is essential that all students, employees, and visitors are familiar with how to safely evacuate buildings on all Clackamas Community College campuses. Building evacuations may be required in a variety of situations, including:

- Fire
- Earthquake
- Hazardous materials spill

To support safe evacuations, the following pages include maps for each college building across all three campuses. These maps provide:

- **Primary and secondary evacuation routes**
- **Designated assembly areas** for accountability after evacuation
- Locations of **emergency equipment**, including:
 - Fire extinguishers
 - First aid kits
 - Automated External Defibrillators (AEDs)
 - Eye wash stations (if available in the building)

During an Evacuation:

- Proceed calmly to the nearest exit as indicated on the evacuation map.
- Go directly to the **designated assembly area** for your building.
- Remain at the assembly area for accountability and await further instructions.
- **Do not re-enter the building** until authorized by a college official or first responder.

On-Site Resources:

Each building has **evacuation maps posted in common areas**, such as hallways and near exits. These maps:

- Show the evacuation routes from your current location
- Include a **removable Emergency Response Guide**, which can be taken with you to the assembly area for reference

Your awareness and cooperation are key to ensuring everyone's safety in an emergency. Please take time to review the posted maps in buildings you frequent and be prepared to act quickly if an evacuation is required.

EVACUATION PROCEDURE



ART CENTER OREGON CITY CAMPUS

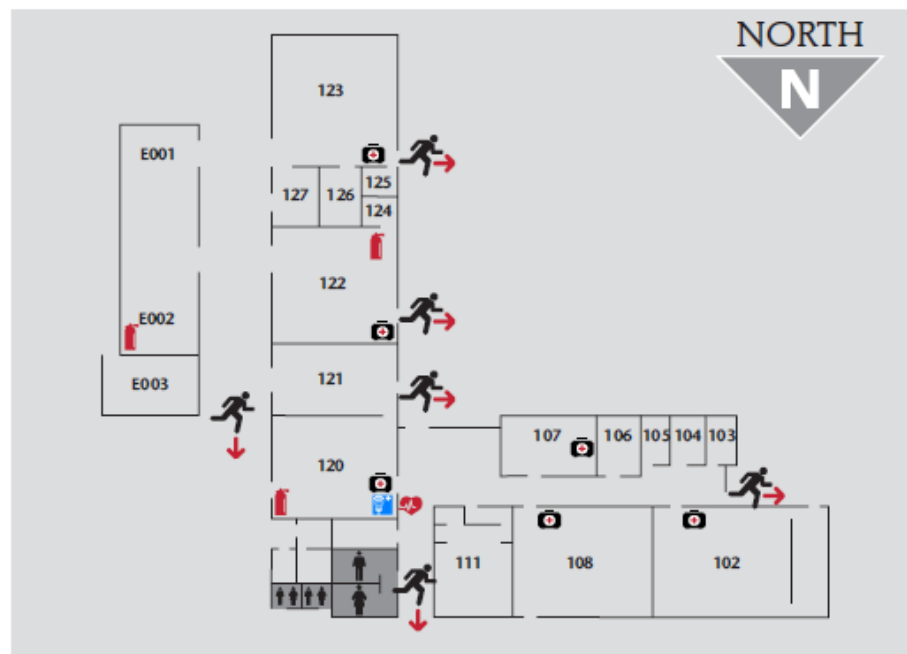
- When evacuation order is given, proceed to the nearest staircase. **Do not use elevators during evacuation!**
- Safely exit building and proceed to nearest **Evacuation Assembly Zone**. The map to the right shows the assembly zone located northwest of the building within the **Yellow lot**.
- Once you have reached the Evacuation Assembly Zone, remain (if safe) until further instructions are provided.

ASSEMBLY ZONE: YELLOW LOT 1



FIRST FLOOR

LEGEND



EVACUATION PROCEDURE



BARLOW HALL OREGON CITY CAMPUS

- When evacuation order is given, proceed to the nearest staircase. **Do not use elevators during evacuation!**
- Safely exit building and proceed to nearest **Evacuation Assembly Zone**. The map to the right shows the assembly zone located east of the building within the **Blue lot**.
- Once you have reached the Evacuation Assembly Zone, remain (if safe) until further instructions are provided.

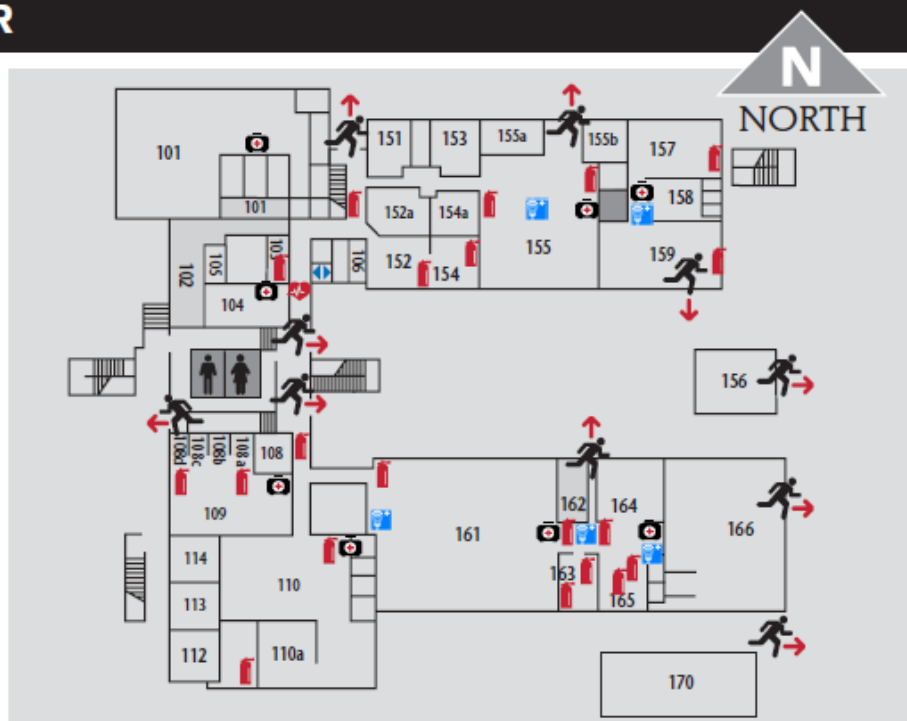
ASSEMBLY ZONE: BLUE LOT



FIRST FLOOR

LEGEND

 EVACUATION ROUTE	 EYE WASH STATION
 FIRST AID KIT	 FIRE EXTINGUISHER
 RESTROOMS	 AED STATION
 ELEVATOR ACCESS	



EVACUATION PROCEDURE



BARLOW HALL OREGON CITY CAMPUS

- When evacuation order is given, proceed to the nearest staircase. **Do not use elevators during evacuation!**
- Safely exit building and proceed to nearest **Evacuation Assembly Zone**. The map to the right shows the assembly zone located east of the building within the **Blue lot**.
- Once you have reached the Evacuation Assembly Zone, remain (if safe) until further instructions are provided.

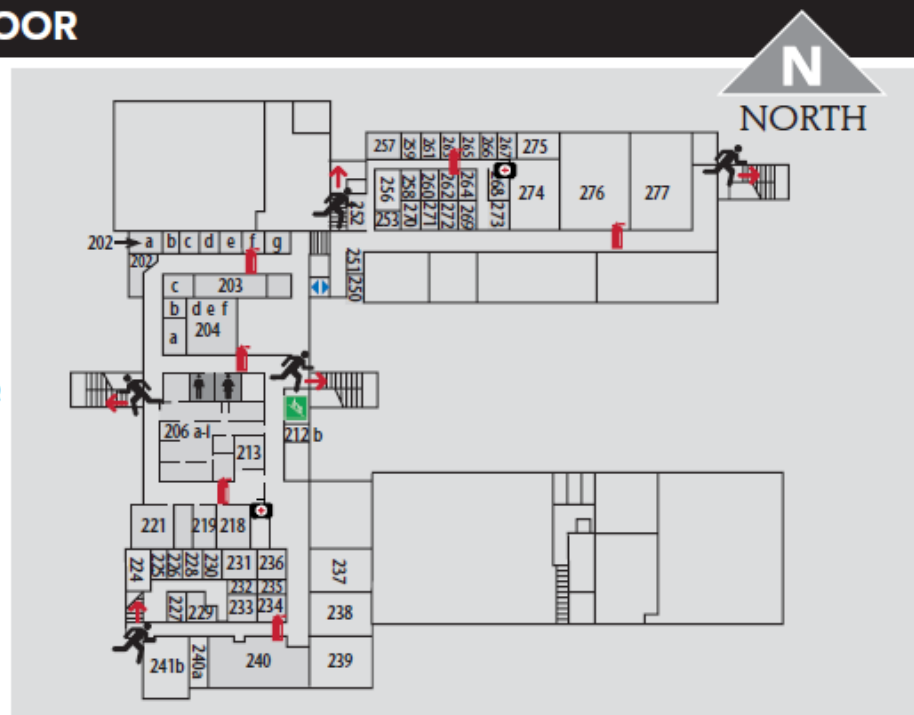
ASSEMBLY ZONE: BLUE LOT



SECOND FLOOR

LEGEND

 EVACUATION ROUTE	 EVACU-TRAC STATION
 FIRST AID KIT	 FIRE EXTINGUISHER
 RESTROOMS	 AED STATION located on First Floor
 ELEVATOR ACCESS	



EVACUATION PROCEDURE



CLAIRMONT HALL OREGON CITY CAMPUS

- When evacuation order is given, proceed to the nearest staircase. **Do not use elevators during evacuation!**
- Safely exit building and proceed to nearest **Evacuation Assembly Zone**. The map to the right shows the assembly zone located east of the building within the **Green lot 2**.
- Once you have reached the Evacuation Assembly Zone, remain (if safe) until further instructions are provided.

ASSEMBLY ZONE: GREEN LOT 2



FIRST FLOOR

LEGEND



NORTH **N**



EVACUATION PROCEDURE



COMMUNITY CENTER

OREGON CITY CAMPUS

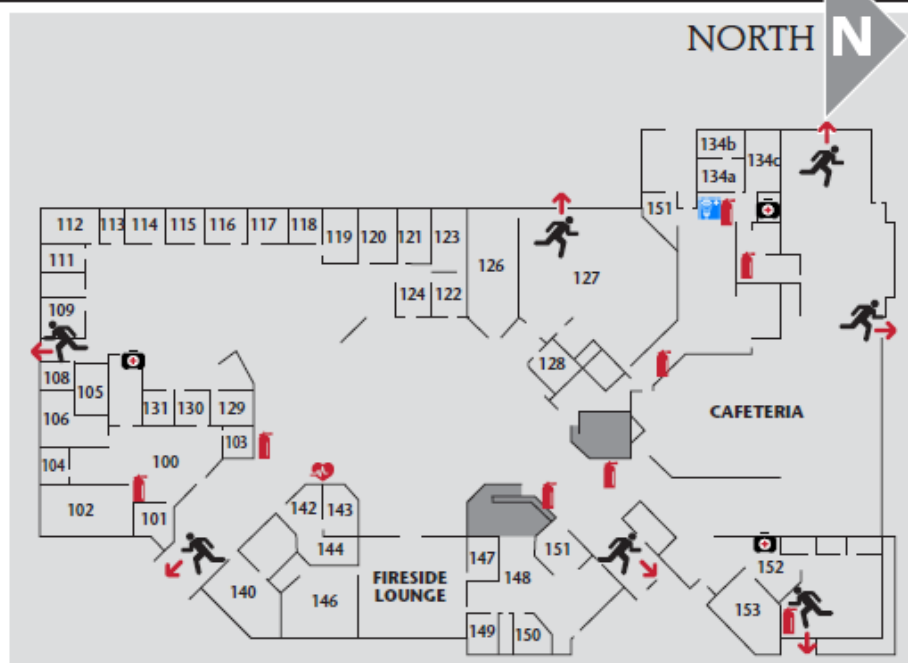
- When evacuation order is given, proceed to the nearest staircase. **Do not use elevators during evacuation!**
- Safely exit building and proceed to nearest **Evacuation Assembly Zone**. The map to the right shows the assembly zone located southwest of the building within the **Orange lot**.
- Once you have reached the Evacuation Assembly Zone, remain (if safe) until further instructions are provided.

ASSEMBLY ZONE: ORANGE LOT



FIRST FLOOR

LEGEND



EVACUATION PROCEDURE



DeJARDIN HALL

OREGON CITY CAMPUS

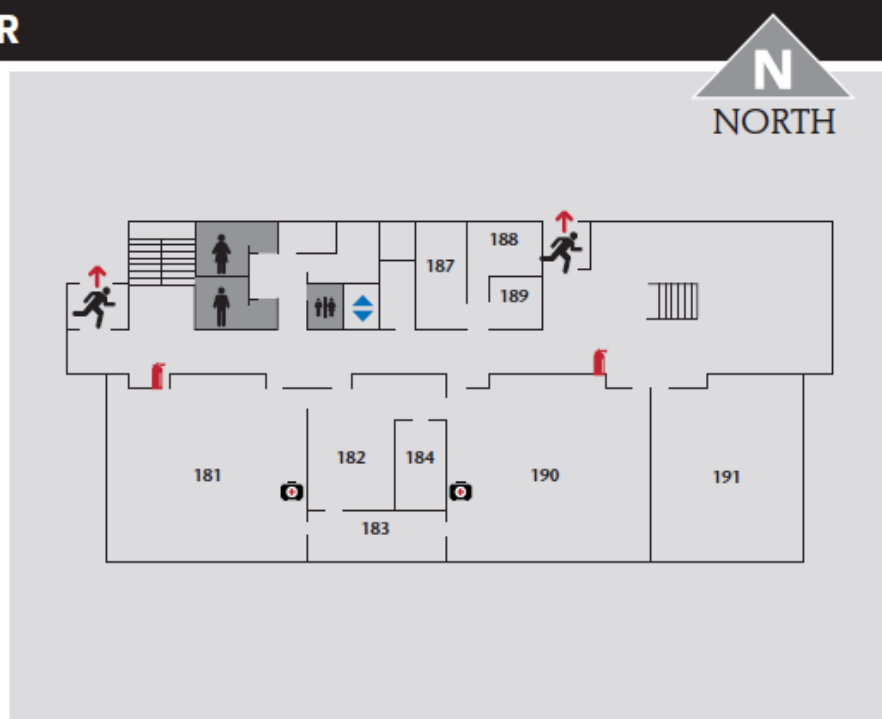
- When evacuation order is given, proceed to the nearest staircase. **Do not use elevators during evacuation!**
- Safely exit building and proceed to nearest **Evacuation Assembly Zone**. The map to the right shows the assembly zone located southwest of the building within the **Orange lot**.
- Once you have reached the Evacuation Assembly Zone, remain (if safe) until further instructions are provided.

ASSEMBLY ZONE: ORANGE LOT



FIRST FLOOR

LEGEND



EVACUATION PROCEDURE



DeJARDIN HALL

OREGON CITY CAMPUS

- When evacuation order is given, proceed to the nearest staircase. **Do not use elevators during evacuation!**
- Safely exit building and proceed to nearest **Evacuation Assembly Zone**. The map to the right shows the assembly zone located southwest of the building within the **Orange lot**.
- Once you have reached the Evacuation Assembly Zone, remain (if safe) until further instructions are provided.

ASSEMBLY ZONE: ORANGE LOT



SECOND FLOOR

LEGEND



N
NORTH

EVACUATION PROCEDURE



DYE LEARNING CENTER OREGON CITY CAMPUS

- When evacuation order is given, proceed to the nearest staircase. **Do not use elevators during evacuation!**
- Safely exit building and proceed to nearest **Evacuation Assembly Zone**. The map to the right shows the assembly zone located west of the building within the **Purple lot 1**.
- Once you have reached the Evacuation Assembly Zone, remain (if safe) until further instructions are provided.

ASSEMBLY ZONE: PURPLE LOT 1



FIRST FLOOR

LEGEND



EVACUATION
ROUTE



FIRE
EXTINGUISHER



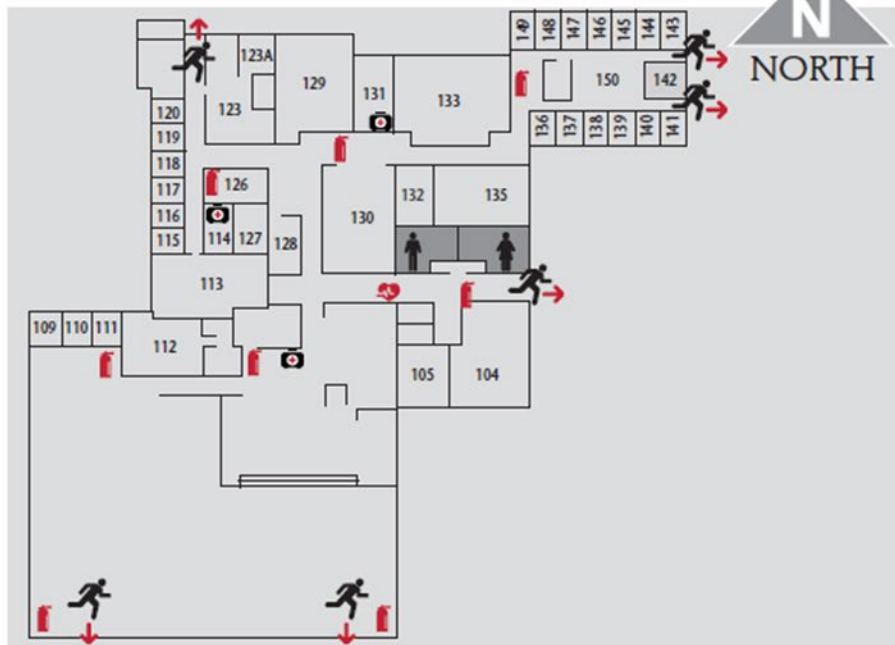
FIRST AID
KIT



AED
STATION



RESTROOMS



EVACUATION PROCEDURE



ENVIRONMENTAL LEARNING CENTER

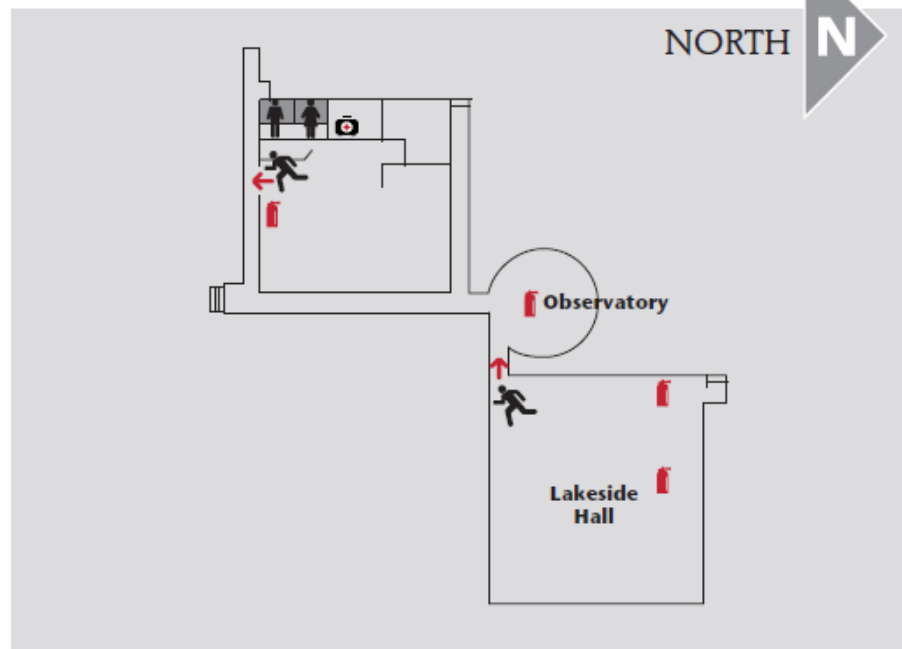
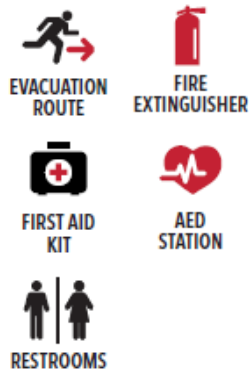
- When evacuation order is given, proceed to the nearest staircase. **Do not use elevators during evacuation!**
- Safely exit building and proceed to nearest **Evacuation Assembly Zone**. The map to the right shows the assembly zone located north of the building within the **Brown lot**.
- Once you have reached the Evacuation Assembly Zone, remain (if safe) until further instructions are provided.

ASSEMBLY ZONE: BROWN LOT



FIRST FLOOR

LEGEND



EVACUATION PROCEDURE



FAMILY RESOURCE CTR. OREGON CITY CAMPUS

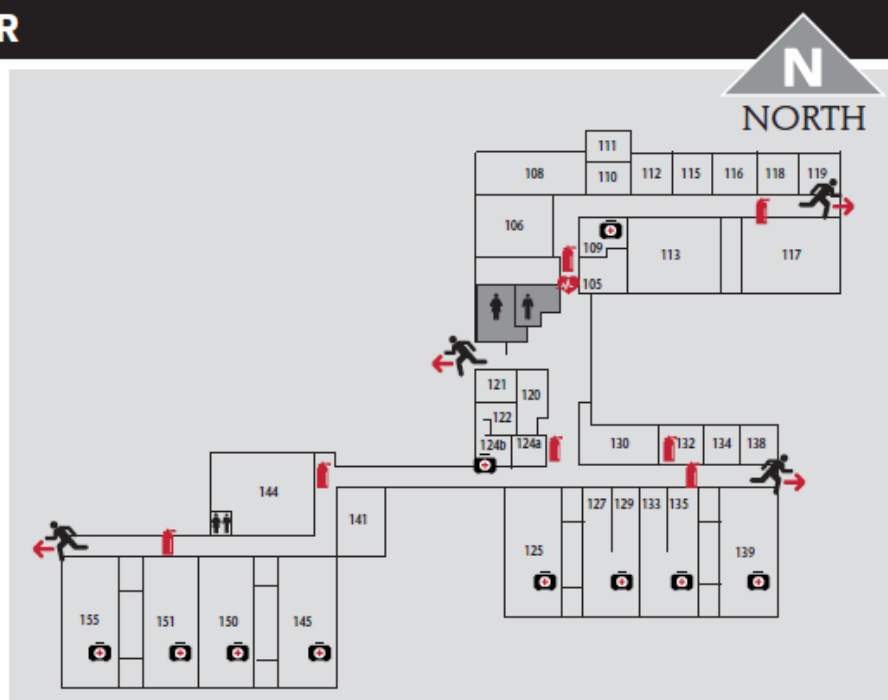
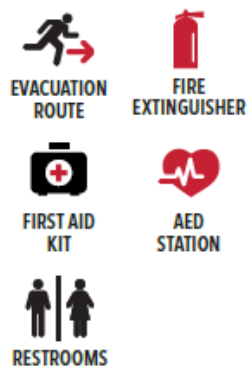
- When evacuation order is given, proceed to the nearest staircase. **Do not use elevators during evacuation!**
- Safely exit building and proceed to nearest **Evacuation Assembly Zone**. The map to the right shows the assembly zone located southwest of the building within the **Purple lot**.
- Once you have reached the Evacuation Assembly Zone, remain (if safe) until further instructions are provided.

ASSEMBLY ZONE: PURPLE LOT



FIRST FLOOR

LEGEND



EVACUATION PROCEDURE



GREGORY FORUM OREGON CITY CAMPUS

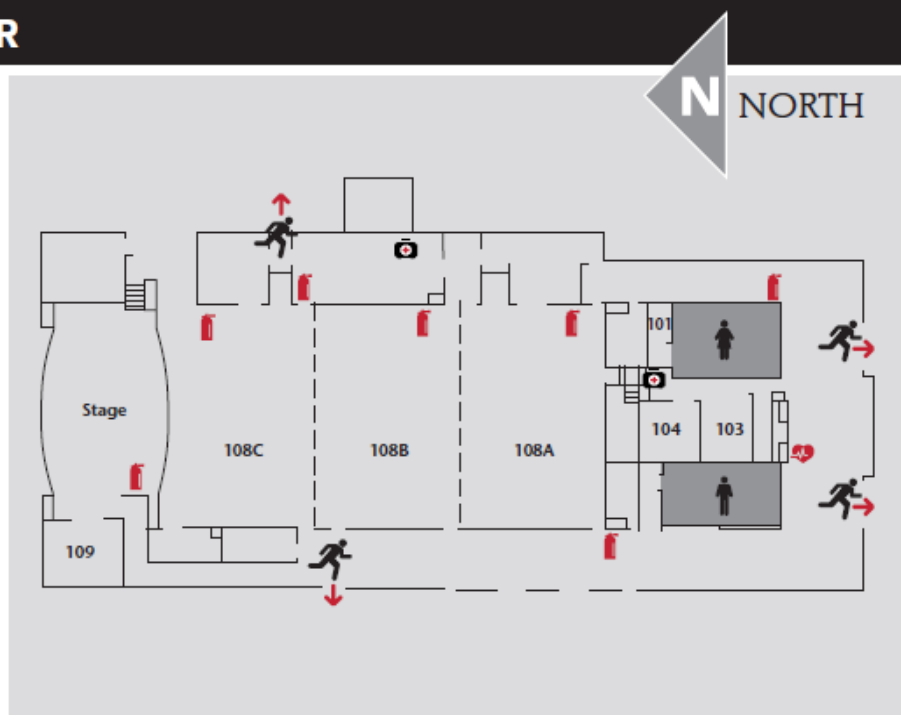
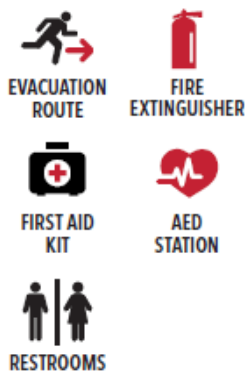
- When evacuation order is given, proceed to the nearest staircase. **Do not use elevators during evacuation!**
- Safely exit building and proceed to nearest **Evacuation Assembly Zone**. The map to the right shows the assembly zone located north of the building within the **Yellow lot**.
- Once you have reached the Evacuation Assembly Zone, remain (if safe) until further instructions are provided.

ASSEMBLY ZONE: YELLOW LOT 1



FIRST FLOOR

LEGEND



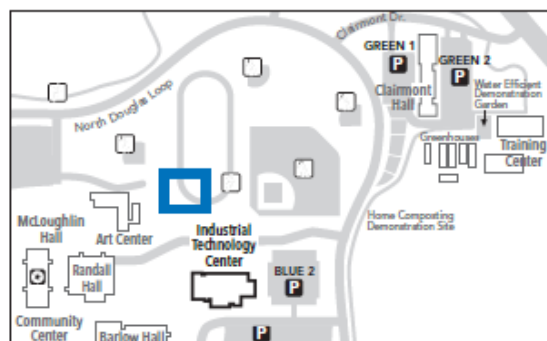
EVACUATION PROCEDURE



INDUSTRIAL TECHNOLOGY CENTER

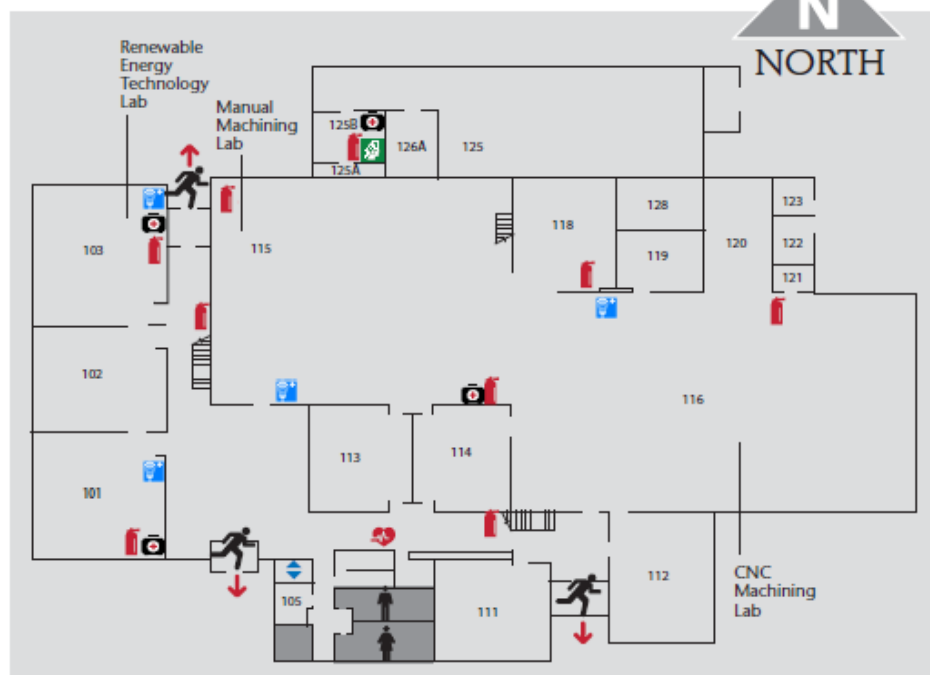
- When evacuation order is given, proceed to the nearest staircase. **Do not use elevators during evacuation!**
- Safely exit building and proceed to nearest **Evacuation Assembly Zone**. The map to the right shows the assembly zone located north of the building by the **Track**.
- Once you have reached the Evacuation Assembly Zone, remain (if safe) until further instructions are provided.

ASSEMBLY ZONE: TRACK



FIRST FLOOR

LEGEND



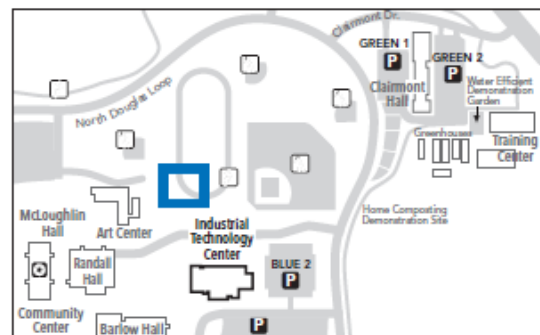
EVACUATION PROCEDURE



INDUSTRIAL TECHNOLOGY CENTER

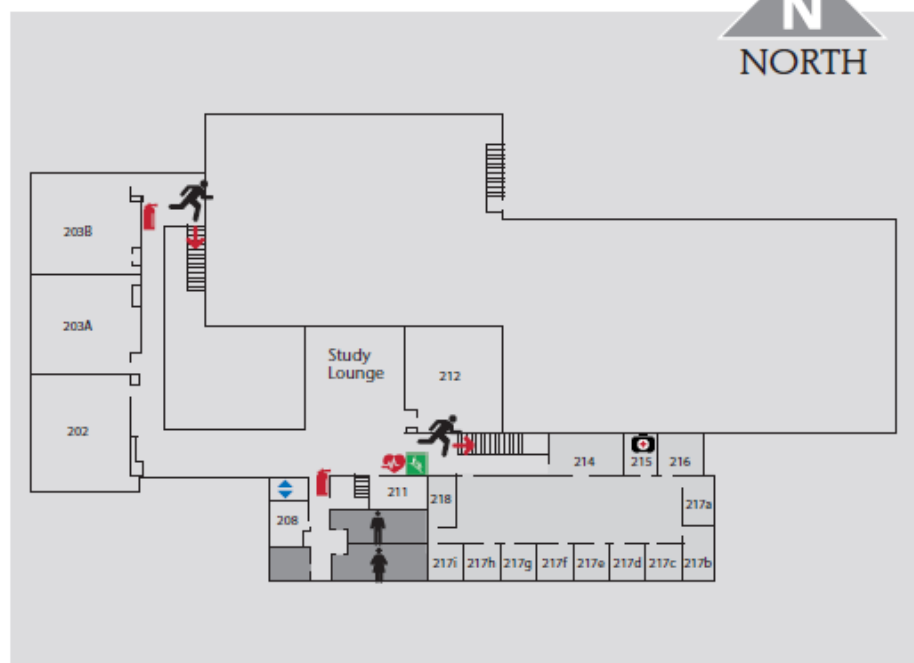
- When evacuation order is given, proceed to the nearest staircase. **Do not use elevators during evacuation!**
- Safely exit building and proceed to nearest **Evacuation Assembly Zone**. The map to the right shows the assembly zone located north of the building by the **Track**.
- Once you have reached the Evacuation Assembly Zone, remain (if safe) until further instructions are provided.

ASSEMBLY ZONE: TRACK



SECOND FLOOR

LEGEND



EVACUATION PROCEDURE



LEWELLING BUILDING OREGON CITY CAMPUS

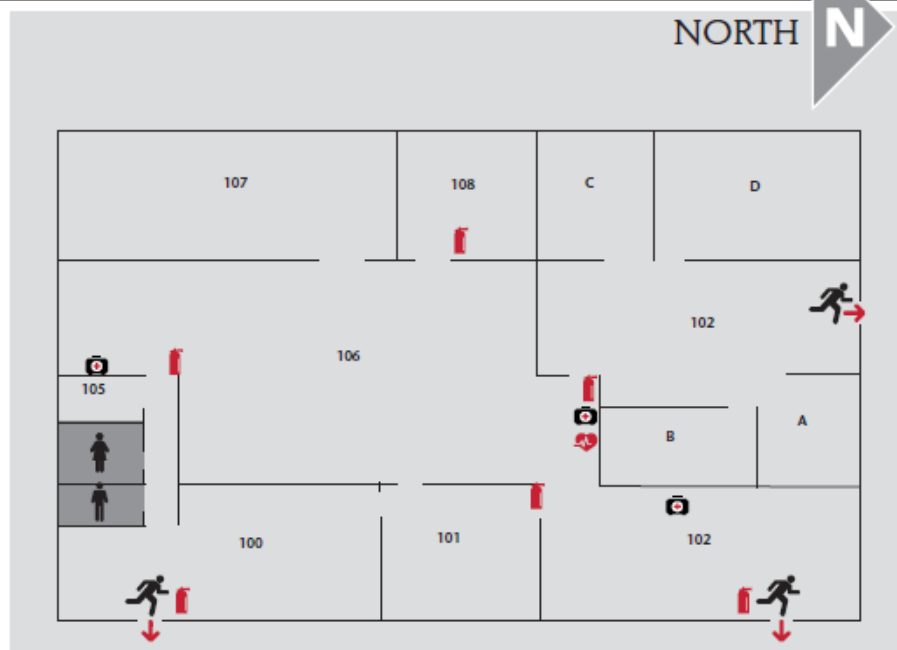
- When evacuation order is given, proceed to the nearest staircase. **Do not use elevators during evacuation!**
- Safely exit building and proceed to nearest **Evacuation Assembly Zone**. The map to the right shows the assembly zone located north of the building within the **Brown lot**.
- Once you have reached the Evacuation Assembly Zone, remain (if safe) until further instructions are provided.

ASSEMBLY ZONE: BROWN LOT



FIRST FLOOR

LEGEND



EVACUATION PROCEDURE



MAINTENANCE BLDG.

OREGON CITY CAMPUS

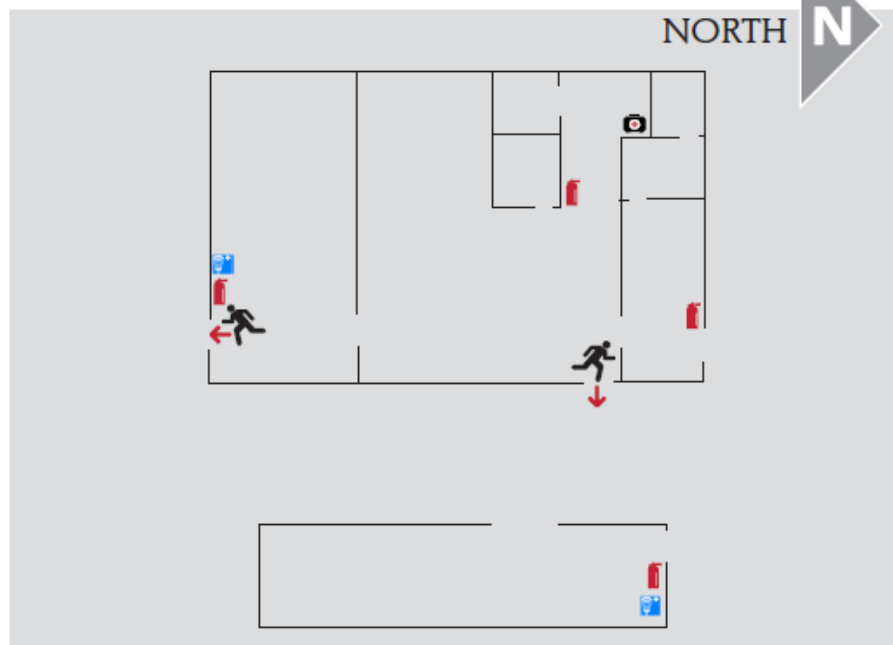
- When evacuation order is given, proceed to the nearest staircase. **Do not use elevators during evacuation!**
- Safely exit building and proceed to nearest **Evacuation Assembly Zone**. The map to the right shows the assembly zone located north of the building within the **Brown lot**.
- Once you have reached the Evacuation Assembly Zone, remain (if safe) until further instructions are provided.

ASSEMBLY ZONE: BROWN LOT



FIRST FLOOR

LEGEND



EVACUATION PROCEDURE



McLOUGHLIN HALL

OREGON CITY CAMPUS

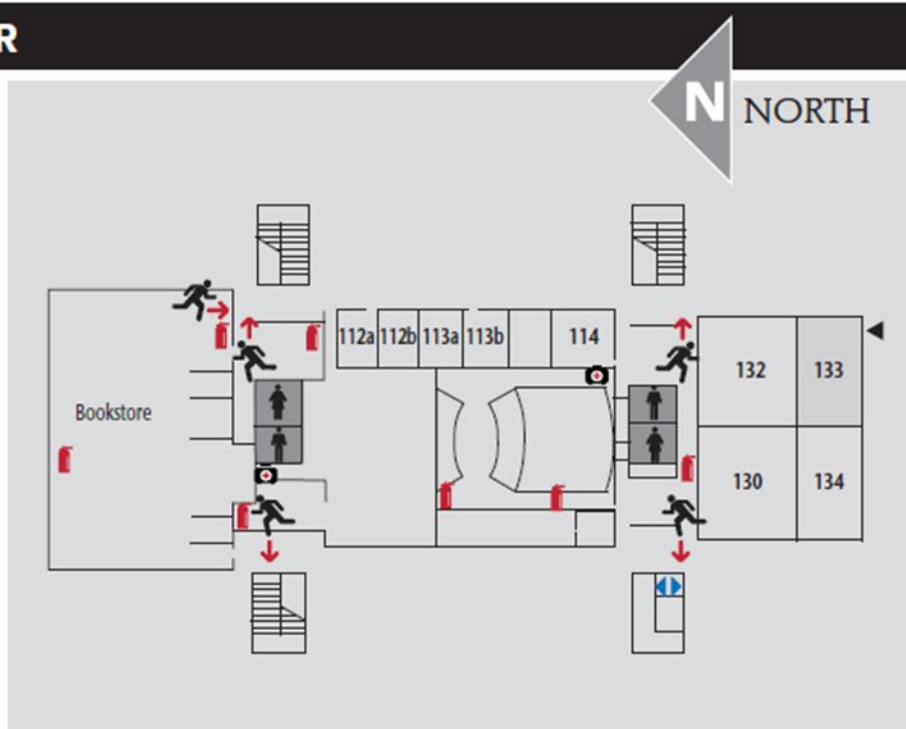
- When evacuation order is given, proceed to the nearest staircase. **Do not use elevators during evacuation!**
- Safely exit building and proceed to nearest **Evacuation Assembly Zone**. The map to the right shows the assembly zone located north of the building within the **Yellow lot**.
- Once you have reached the Evacuation Assembly Zone, remain (if safe) until further instructions are provided.

ASSEMBLY ZONE: YELLOW LOT 1



FIRST FLOOR

LEGEND



EVACUATION PROCEDURE



McLOUGHLIN HALL OREGON CITY CAMPUS

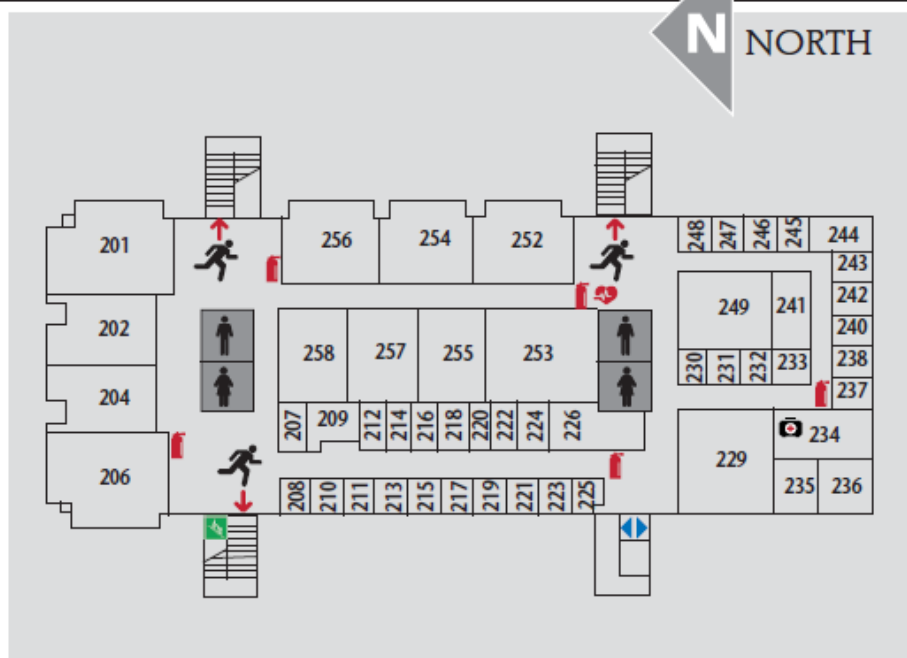
- When evacuation order is given, proceed to the nearest staircase. **Do not use elevators during evacuation!**
- Safely exit building and proceed to nearest **Evacuation Assembly Zone**. The map to the right shows the assembly zone located north of the building within the **Yellow lot**.
- Once you have reached the Evacuation Assembly Zone, remain (if safe) until further instructions are provided.

ASSEMBLY ZONE: YELLOW LOT 1



SECOND FLOOR

LEGEND



EVACUATION PROCEDURE



NIEMEYER CENTER OREGON CITY CAMPUS

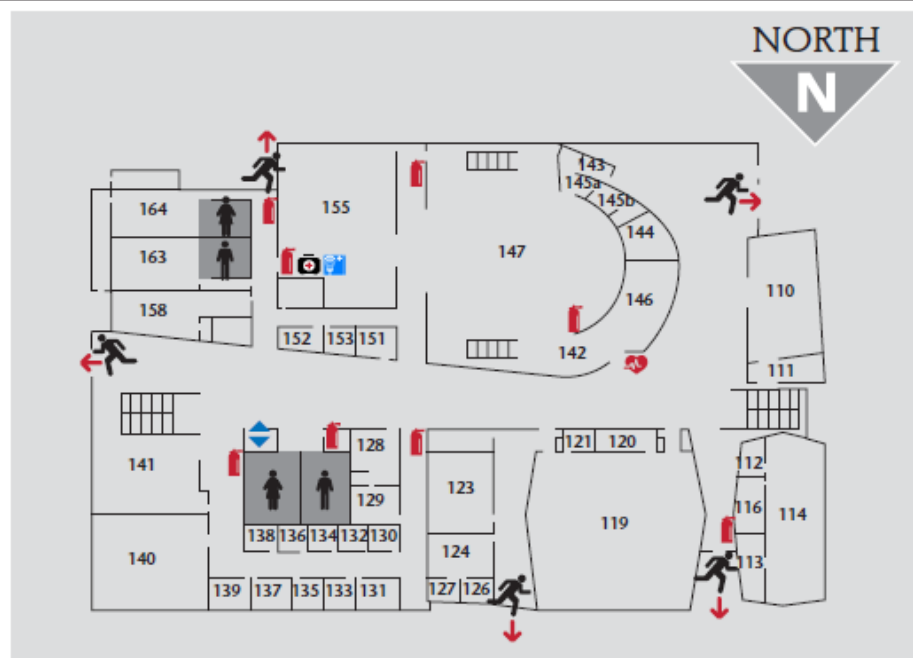
- When evacuation order is given, proceed to the nearest staircase. **Do not use elevators during evacuation!**
- Safely exit building and proceed to nearest **Evacuation Assembly Zone**. The map to the right shows the assembly zone located north of the building within the **Yellow lot**.
- Once you have reached the Evacuation Assembly Zone, remain (if safe) until further instructions are provided.

ASSEMBLY ZONE: YELLOW LOT 1



FIRST FLOOR

LEGEND



EVACUATION PROCEDURE



NIEMEYER CENTER OREGON CITY CAMPUS

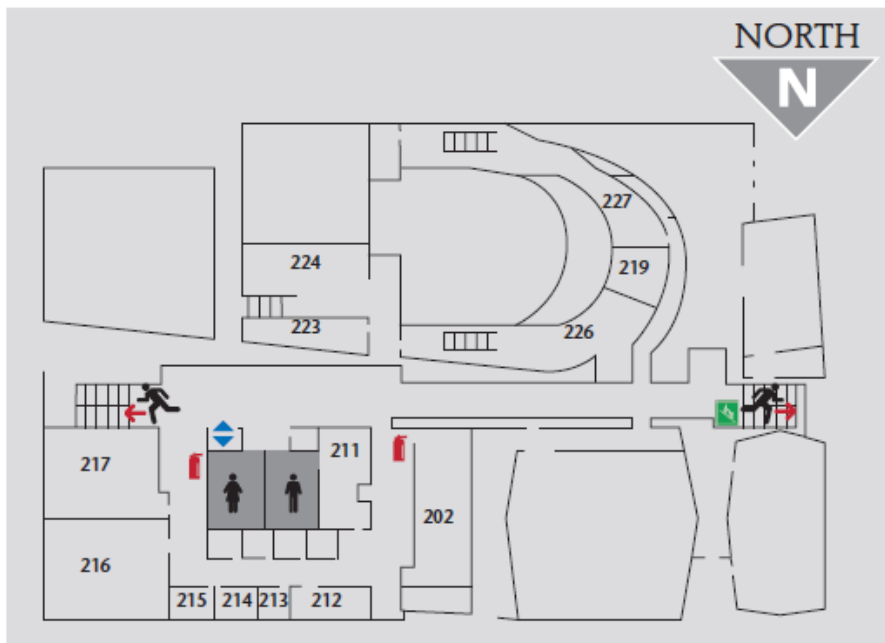
- When evacuation order is given, proceed to the nearest staircase. **Do not use elevators during evacuation!**
- Safely exit building and proceed to nearest **Evacuation Assembly Zone**. The map to the right shows the assembly zone located north of the building within the **Yellow lot**.
- Once you have reached the Evacuation Assembly Zone, remain (if safe) until further instructions are provided.

ASSEMBLY ZONE: YELLOW LOT 1



SECOND FLOOR

LEGEND



EVACUATION PROCEDURE



PAULING CENTER

OREGON CITY CAMPUS

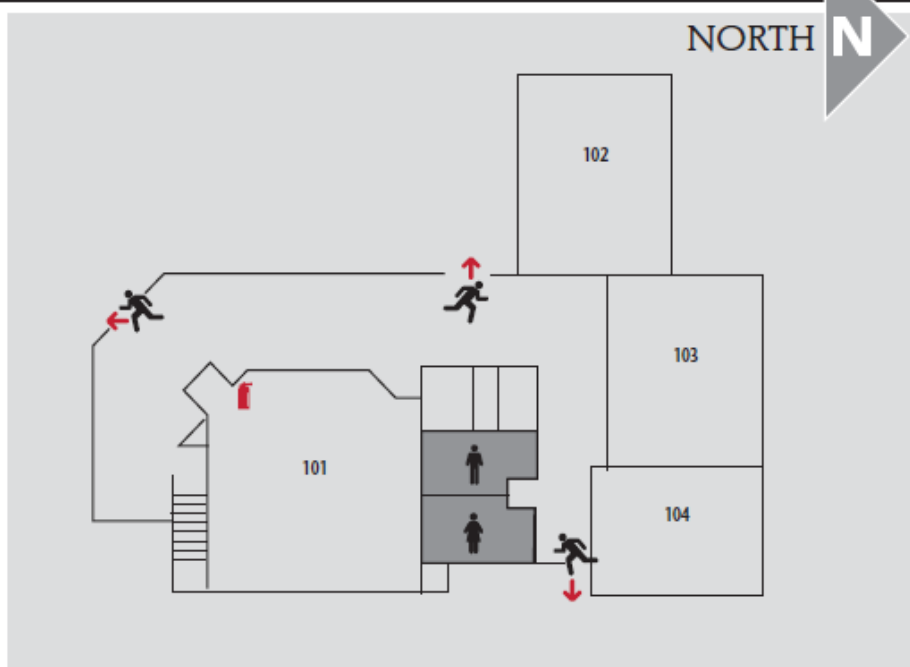
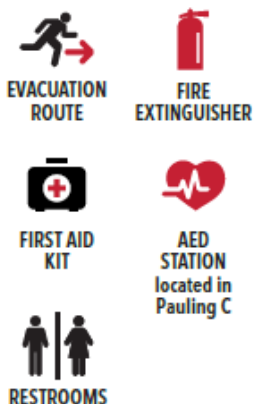
- When evacuation order is given, proceed to the nearest staircase. **Do not use elevators during evacuation!**
- Safely exit building and proceed to nearest **Evacuation Assembly Zone**. The map to the right shows the assembly zone located southwest of the building within the **Orange lot**.
- Once you have reached the Evacuation Assembly Zone, remain (if safe) until further instructions are provided.

ASSEMBLY ZONE: ORANGE LOT



PAULING A

LEGEND



EVACUATION PROCEDURE



PAULING CENTER

OREGON CITY CAMPUS

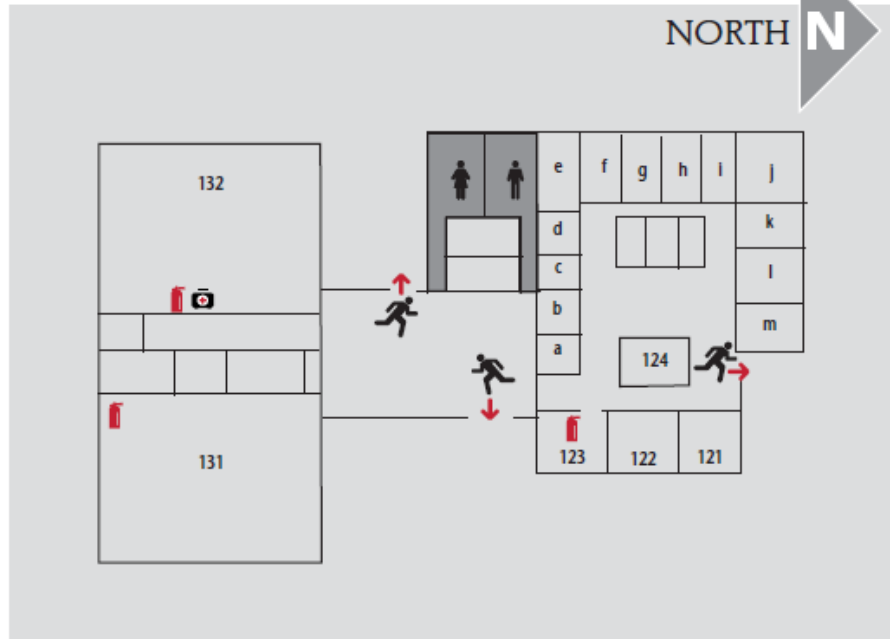
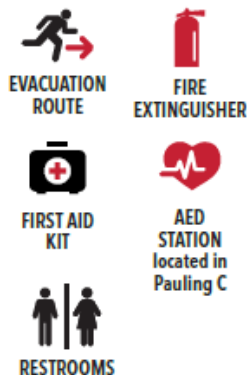
- When evacuation order is given, proceed to the nearest staircase. **Do not use elevators during evacuation!**
- Safely exit building and proceed to nearest **Evacuation Assembly Zone**. The map to the right shows the assembly zone located southwest of the building within the **Orange lot**.
- Once you have reached the Evacuation Assembly Zone, remain (if safe) until further instructions are provided.

ASSEMBLY ZONE: ORANGE LOT



PAULING B

LEGEND



EVACUATION PROCEDURE



PAULING CENTER

OREGON CITY CAMPUS

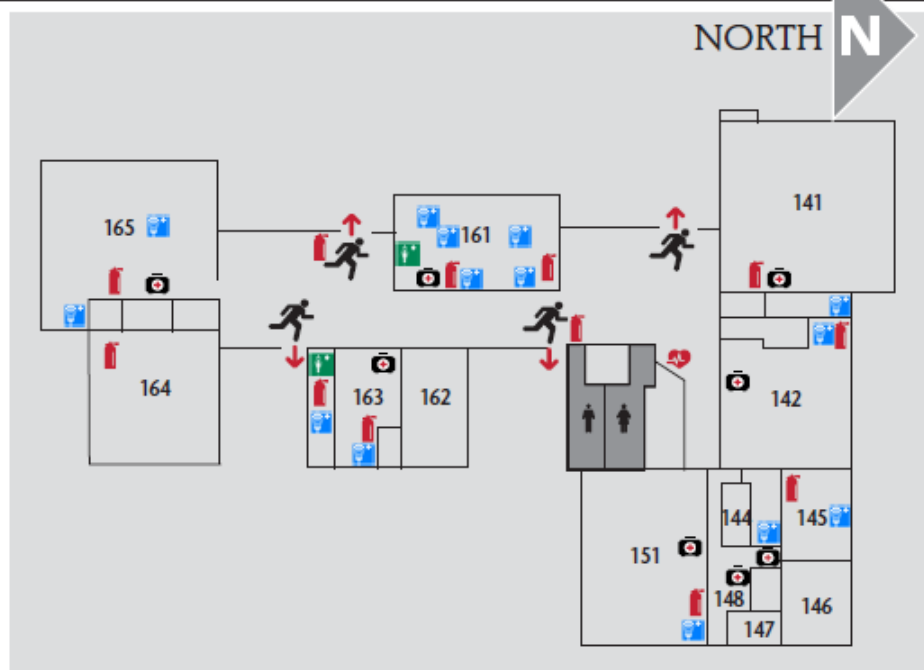
- When evacuation order is given, proceed to the nearest staircase. **Do not use elevators during evacuation!**
- Safely exit building and proceed to nearest **Evacuation Assembly Zone**. The map to the right shows the assembly zone located southwest of the building within the **Orange lot**.
- Once you have reached the Evacuation Assembly Zone, remain (if safe) until further instructions are provided.

ASSEMBLY ZONE: ORANGE LOT



PAULING C

LEGEND



EVACUATION PROCEDURE



RANDALL HALL

OREGON CITY CAMPUS

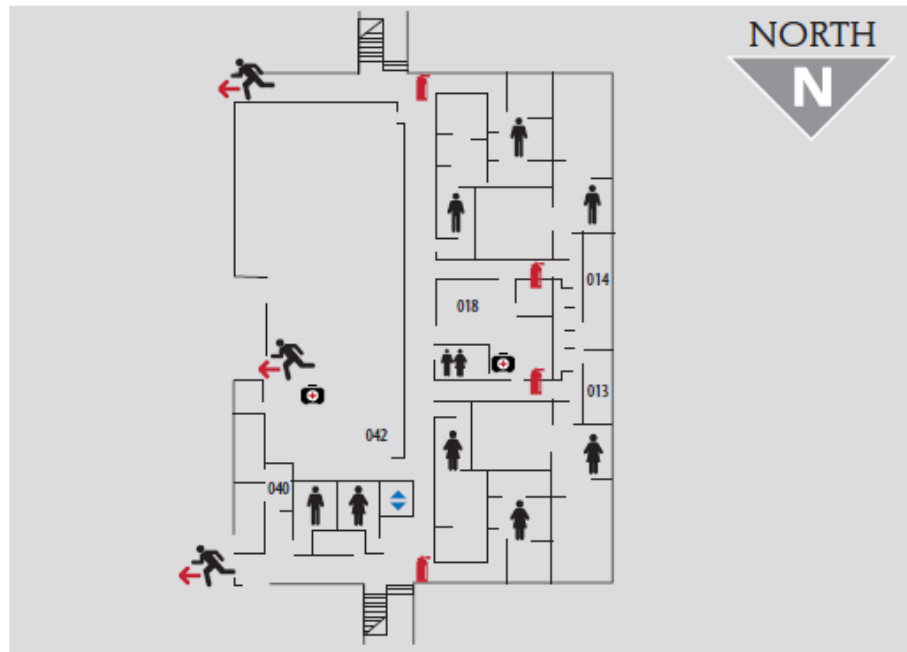
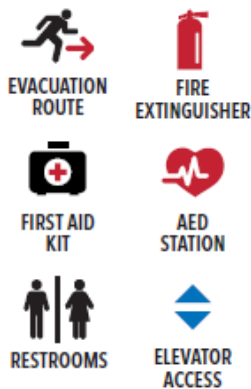
- When evacuation order is given, proceed to the nearest staircase. **Do not use elevators during evacuation!**
- Safely exit building and proceed to nearest **Evacuation Assembly Zone**. The map to the right shows the assembly zone located north of the building within the **Yellow lot**.
- Once you have reached the Evacuation Assembly Zone, remain (if safe) until further instructions are provided.

ASSEMBLY ZONE: YELLOW LOT 1



GROUND FLOOR

LEGEND



EVACUATION PROCEDURE



RANDALL HALL

OREGON CITY CAMPUS

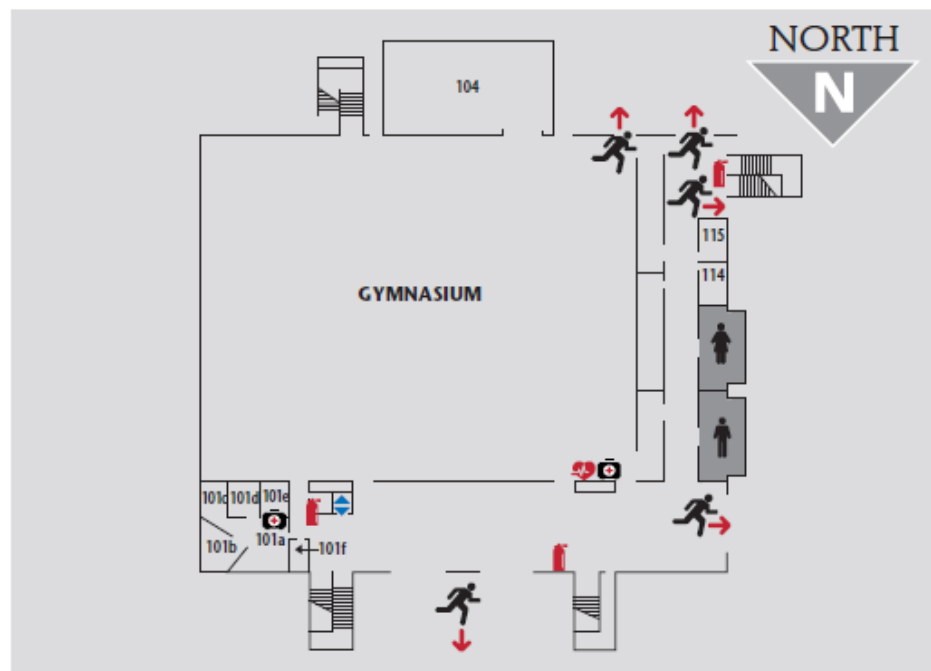
- When evacuation order is given, proceed to the nearest staircase. **Do not use elevators during evacuation!**
- Safely exit building and proceed to nearest **Evacuation Assembly Zone**. The map to the right shows the assembly zone located north of the building within the **Yellow lot**.
- Once you have reached the Evacuation Assembly Zone, remain (if safe) until further instructions are provided.

ASSEMBLY ZONE: YELLOW LOT 1



FIRST FLOOR

LEGEND



EVACUATION PROCEDURE



RANDALL HALL

OREGON CITY CAMPUS

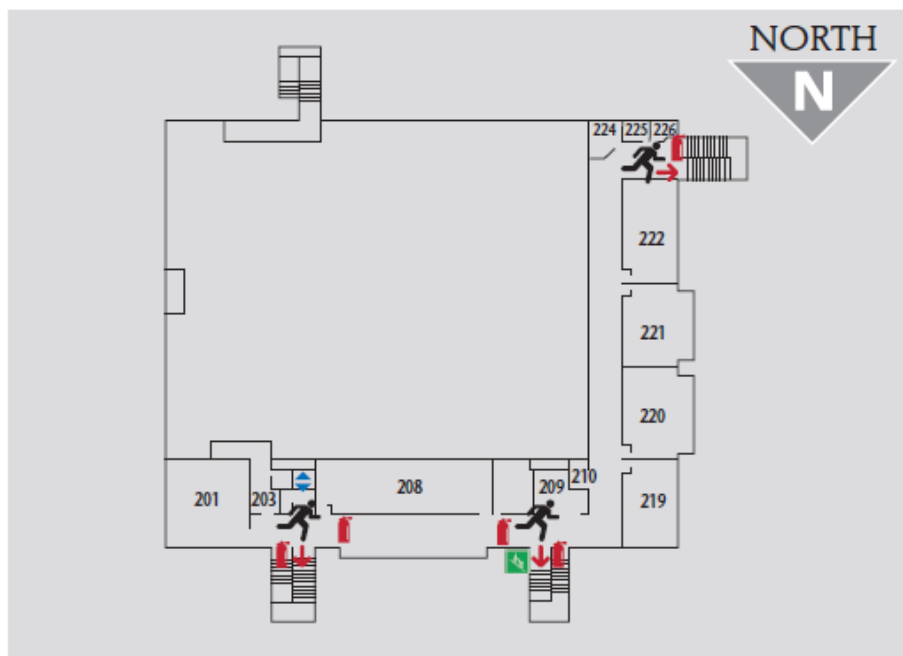
- When evacuation order is given, proceed to the nearest staircase. **Do not use elevators during evacuation!**
- Safely exit building and proceed to nearest **Evacuation Assembly Zone**. The map to the right shows the assembly zone located north of the building within the **Yellow lot**.
- Once you have reached the Evacuation Assembly Zone, remain (if safe) until further instructions are provided.

ASSEMBLY ZONE: YELLOW LOT 1



SECOND FLOOR

LEGEND



EVACUATION PROCEDURE



ROGER ROOK HALL

OREGON CITY CAMPUS

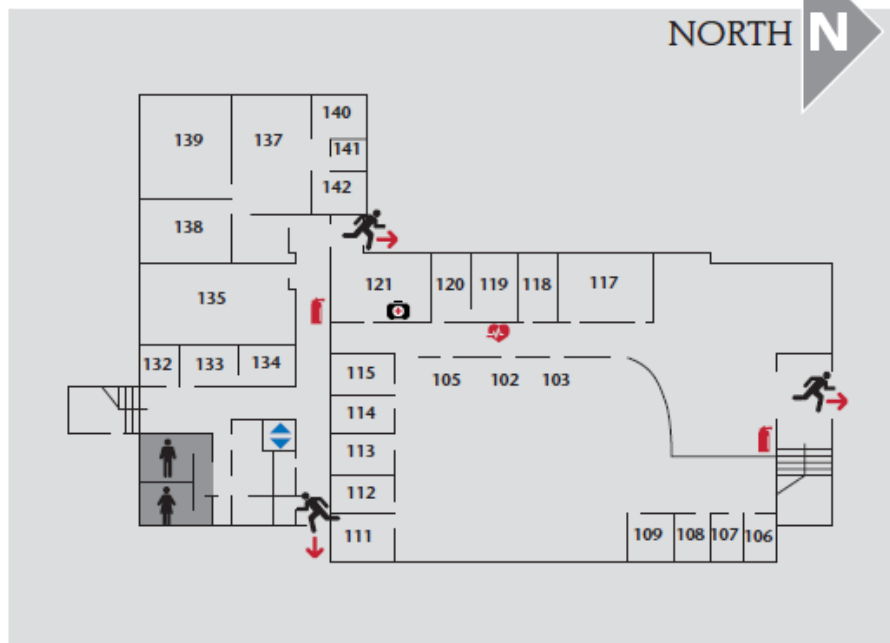
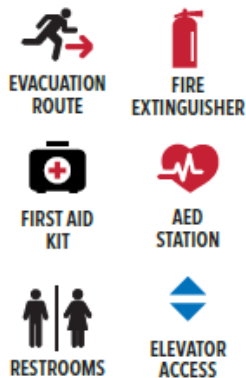
- When evacuation order is given, proceed to the nearest staircase. **Do not use elevators during evacuation!**
- Safely exit building and proceed to nearest **Evacuation Assembly Zone**. The map to the right shows the assembly zone located southwest of the building within the **Orange lot**.
- Once you have reached the Evacuation Assembly Zone, remain (if safe) until further instructions are provided.

ASSEMBLY ZONE: ORANGE LOT



FIRST FLOOR

LEGEND



EVACUATION PROCEDURE



ROGER ROOK HALL

OREGON CITY CAMPUS

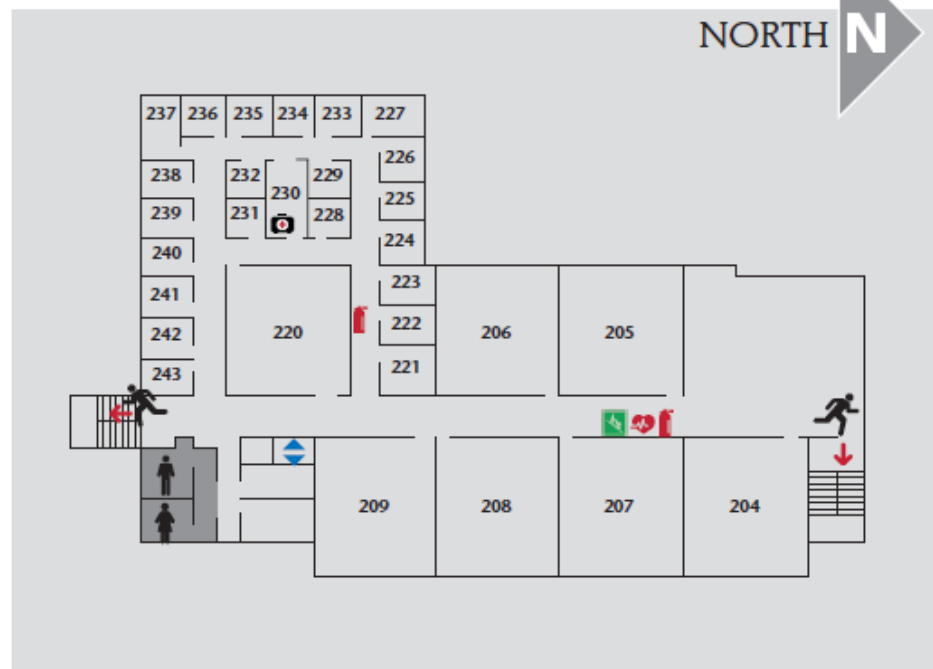
- When evacuation order is given, proceed to the nearest staircase. **Do not use elevators during evacuation!**
- Safely exit building and proceed to nearest **Evacuation Assembly Zone**. The map to the right shows the assembly zone located southwest of the building within the **Orange lot**.
- Once you have reached the Evacuation Assembly Zone, remain (if safe) until further instructions are provided.

ASSEMBLY ZONE: ORANGE LOT



SECOND FLOOR

LEGEND



EVACUATION PROCEDURE



STREETER ANNEX OREGON CITY CAMPUS

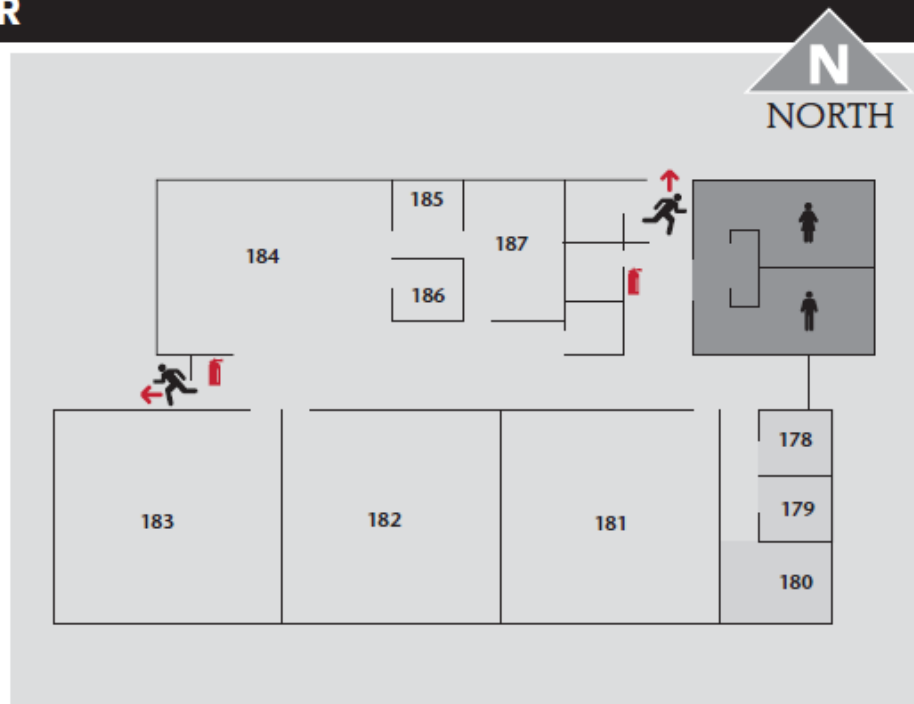
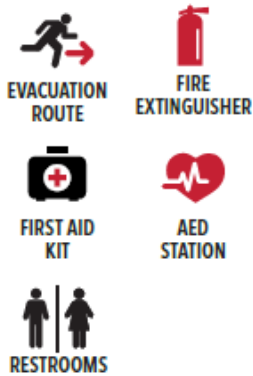
- When evacuation order is given, proceed to the nearest staircase. **Do not use elevators during evacuation!**
- Safely exit building and proceed to nearest **Evacuation Assembly Zone**. The map to the right shows the assembly zone located northwest of the building within the **Purple lot 1**.
- Once you have reached the Evacuation Assembly Zone, remain (if safe) until further instructions are provided.

ASSEMBLY ZONE: PURPLE LOT 1



FIRST FLOOR

LEGEND



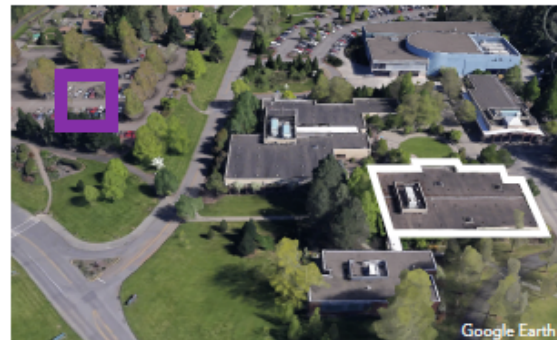
EVACUATION PROCEDURE



STREETER HALL OREGON CITY CAMPUS

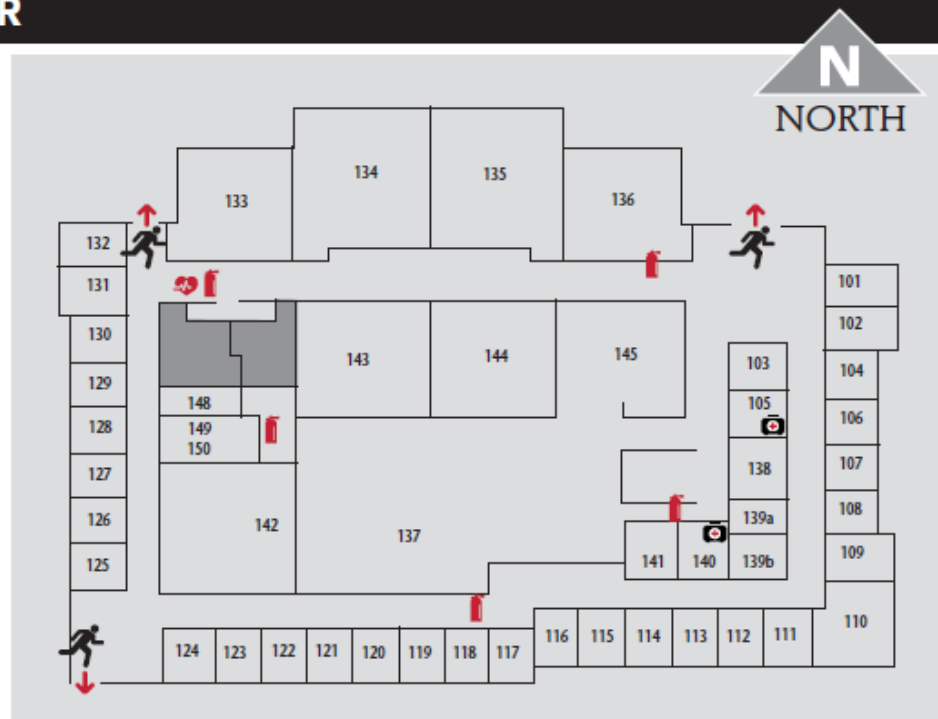
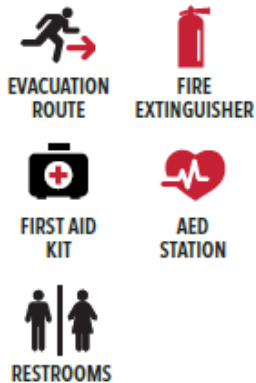
- When evacuation order is given, proceed to the nearest staircase. **Do not use elevators during evacuation!**
- Safely exit building and proceed to nearest **Evacuation Assembly Zone**. The map to the right shows the assembly zone located northwest of the building within the **Purple lot 1**.
- Once you have reached the Evacuation Assembly Zone, remain (if safe) until further instructions are provided.

ASSEMBLY ZONE: PURPLE LOT 1



FIRST FLOOR

LEGEND



EVACUATION PROCEDURE



TRAINING CENTER A

OREGON CITY CAMPUS

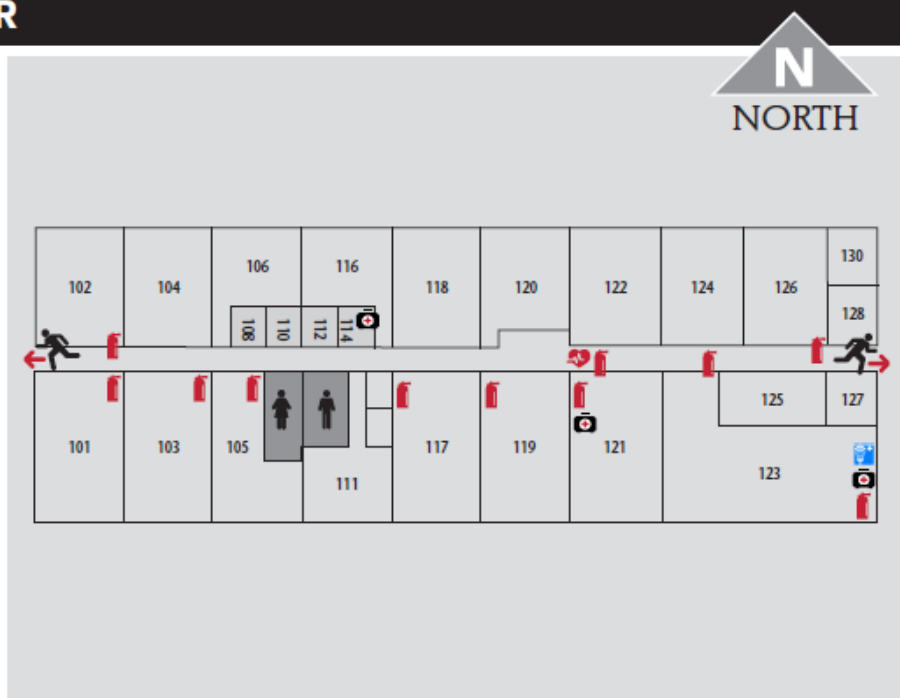
- When evacuation order is given, proceed to the nearest staircase. **Do not use elevators during evacuation!**
- Safely exit building and proceed to nearest **Evacuation Assembly Zone**. The map to the right shows the assembly zone located northwest of the building within the **Green lot 2**.
- Once you have reached the Evacuation Assembly Zone, remain (if safe) until further instructions are provided.

ASSEMBLY ZONE: GREEN LOT 2



FIRST FLOOR

LEGEND



EVACUATION PROCEDURE



TRAINING CENTER B

OREGON CITY CAMPUS

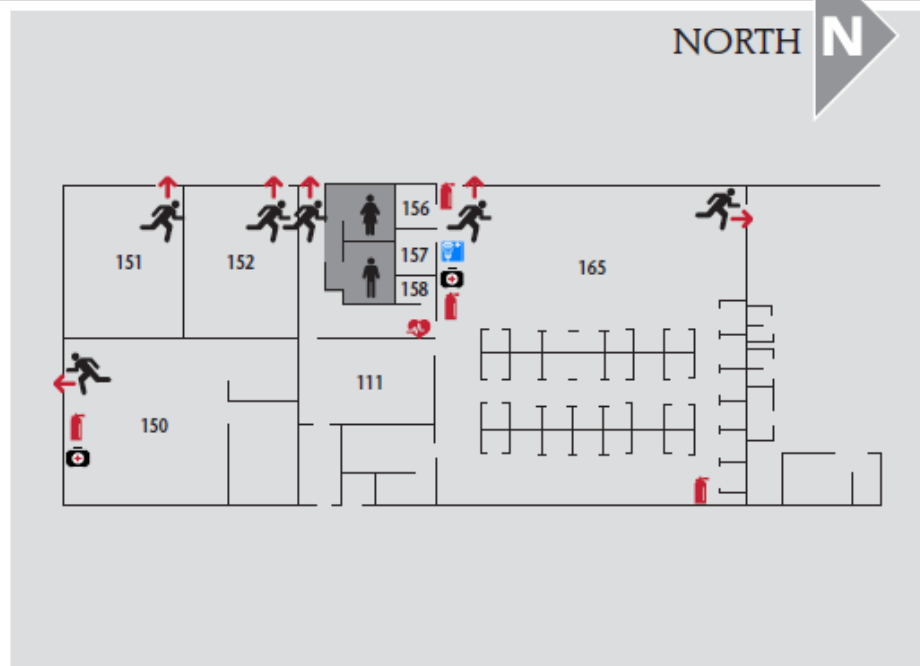
- When evacuation order is given, proceed to the nearest staircase. **Do not use elevators during evacuation!**
- Safely exit building and proceed to nearest **Evacuation Assembly Zone**. The map to the right shows the assembly zone located southwest of the building within the **Green lot 2**.
- Once you have reached the Evacuation Assembly Zone, remain (if safe) until further instructions are provided.

ASSEMBLY ZONE: GREEN LOT 2



FIRST FLOOR

LEGEND



EVACUATION PROCEDURE



HARMONY WEST

AT HARMONY COMMUNITY CAMPUS

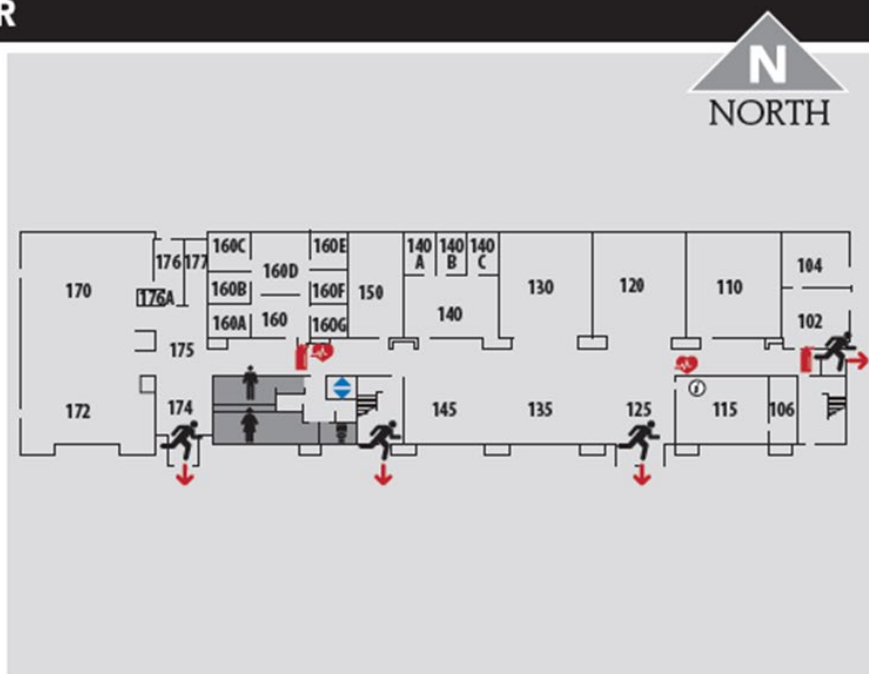
- When evacuation order is given, proceed to the nearest staircase. **Do not use elevators during evacuation!**
- Safely exit building and proceed to nearest **Evacuation Assembly Zone**. The map to the right shows the assembly zone located southwest of the building within the parking lot.
- Once you have reached the Evacuation Assembly Zone, remain (if safe) until further instructions are provided.

ASSEMBLY ZONE: PARKING LOT



FIRST FLOOR

LEGEND



EVACUATION PROCEDURE



HARMONY WEST

AT HARMONY COMMUNITY CAMPUS

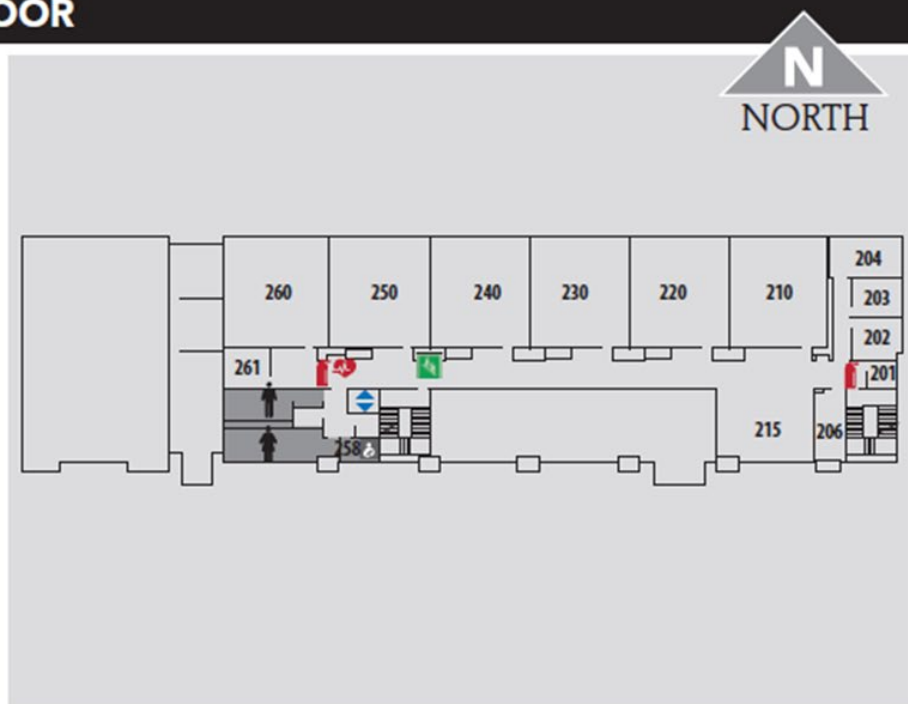
- When evacuation order is given, proceed to the nearest staircase. **Do not use elevators during evacuation!**
- Safely exit building and proceed to nearest **Evacuation Assembly Zone**. The map to the right shows the assembly zone located southwest of the building within the parking lot.
- Once you have reached the Evacuation Assembly Zone, remain (if safe) until further instructions are provided.

ASSEMBLY ZONE: PARKING LOT



SECOND FLOOR

LEGEND



EVACUATION PROCEDURE



HARMONY WEST

AT HARMONY COMMUNITY CAMPUS

- When evacuation order is given, proceed to the nearest staircase. **Do not use elevators during evacuation!**
- Safely exit building and proceed to nearest **Evacuation Assembly Zone**. The map to the right shows the assembly zone located southwest of the building within the parking lot.
- Once you have reached the Evacuation Assembly Zone, remain (if safe) until further instructions are provided.

ASSEMBLY ZONE: PARKING LOT



THIRD FLOOR

LEGEND



N
NORTH



EVACUATION PROCEDURE



HARMONY EAST AT HARMONY COMMUNITY CAMPUS

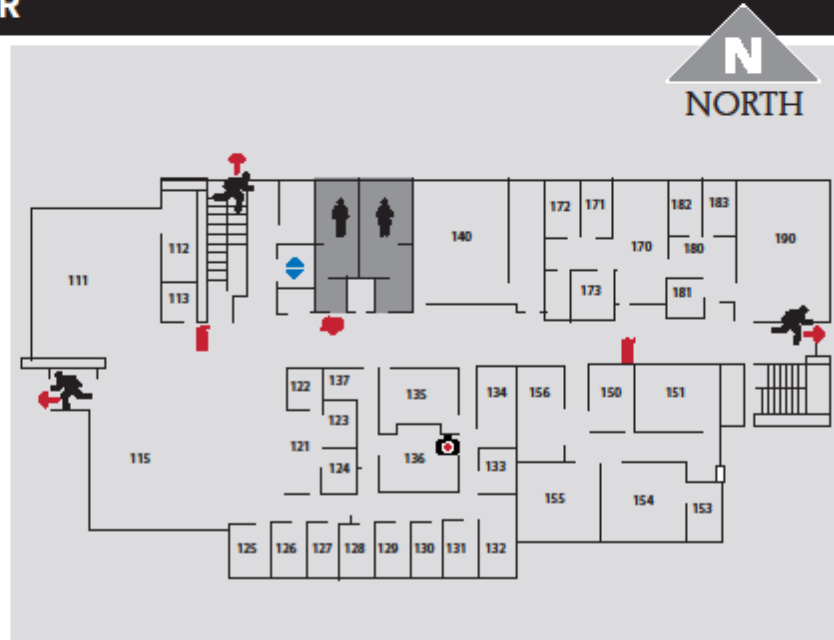
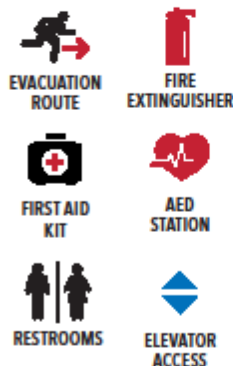
- When evacuation order is given, proceed to the nearest staircase. **Do not use elevators during evacuation!**
- Safely exit building and proceed to nearest **Evacuation Assembly Zone**. The map to the right shows the assembly zone located southwest of the building within the **parking lot**.
- Once you have reached the Evacuation Assembly Zone, remain (if safe) until further instructions are provided.

ASSEMBLY ZONE: PARKING LOT



FIRST FLOOR

LEGEND



EVACUATION PROCEDURE



HARMONY EAST AT HARMONY COMMUNITY CAMPUS

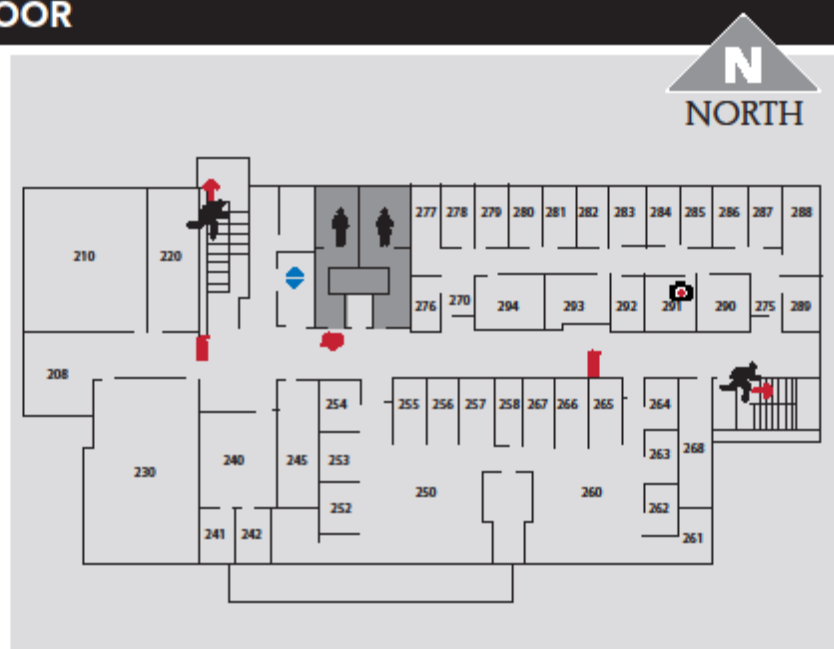
- When evacuation order is given, proceed to the nearest staircase. **Do not use elevators during evacuation!**
- Safely exit building and proceed to nearest **Evacuation Assembly Zone**. The map to the right shows the assembly zone located southwest of the building within the parking lot.
- Once you have reached the Evacuation Assembly Zone, remain (if safe) until further instructions are provided.

ASSEMBLY ZONE: PARKING LOT



SECOND FLOOR

LEGEND



EVACUATION PROCEDURE



HARMONY EAST

AT HARMONY COMMUNITY CAMPUS

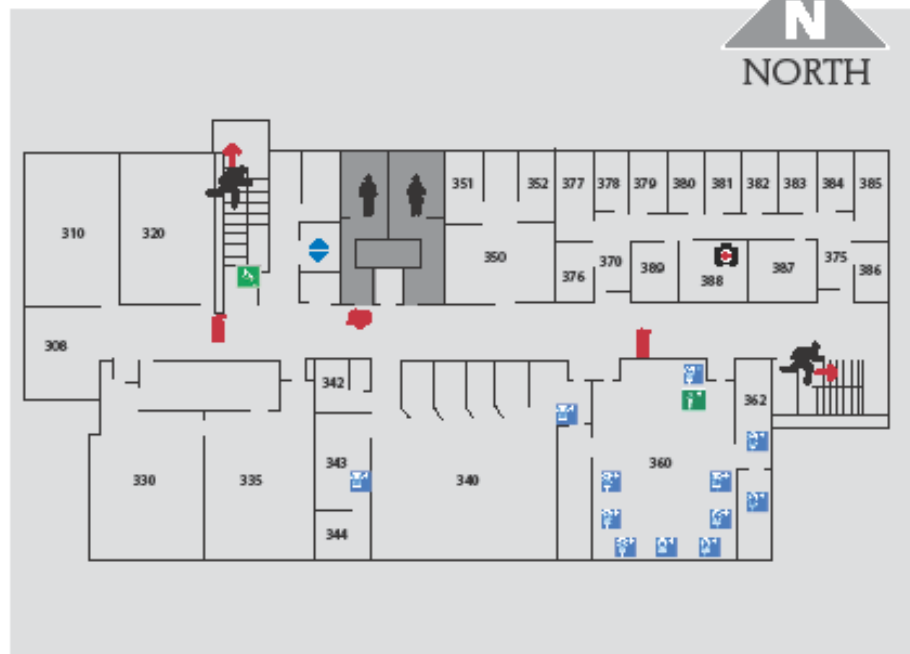
- When evacuation order is given, proceed to the nearest staircase. **Do not use elevators during evacuation!**
- Safely exit building and proceed to nearest **Evacuation Assembly Zone**. The map to the right shows the assembly zone located southwest of the building within the parking lot.
- Once you have reached the Evacuation Assembly Zone, remain (if safe) until further instructions are provided.

ASSEMBLY ZONE: PARKING LOT



THIRD FLOOR

LEGEND



EVACUATION PROCEDURE



WILSONVILLE TRAINING CENTER

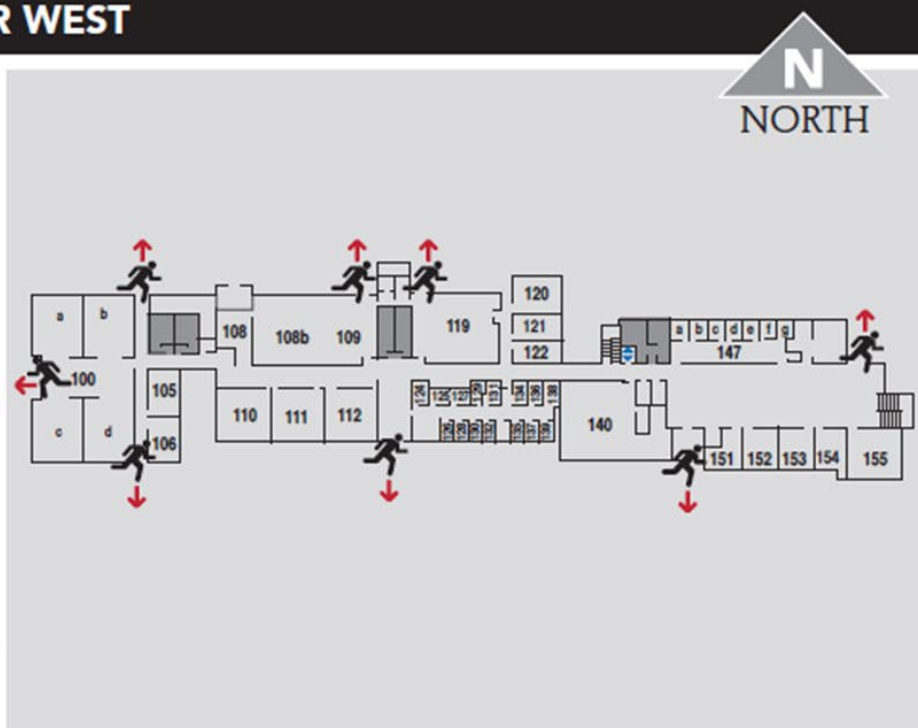
- When evacuation order is given, proceed to the nearest staircase. **Do not use elevators during evacuation!**
- Safely exit building and proceed to nearest **Evacuation Assembly Zone**. The map to the right shows the assembly zones located southwest of the building.
- Once you have reached the Evacuation Assembly Zone, remain (if safe) until further instructions are provided.

ASSEMBLY ZONES



FIRST FLOOR WEST

LEGEND



EVACUATION PROCEDURE



WILSONVILLE TRAINING CENTER

- When evacuation order is given, proceed to the nearest staircase. **Do not use elevators during evacuation!**
- Safely exit building and proceed to nearest **Evacuation Assembly Zone**. The map to the right shows the assembly zones located southeast of the building.
- Once you have reached the Evacuation Assembly Zone, remain (if safe) until further instructions are provided.

ASSEMBLY ZONES



SECOND FLOOR

LEGEND

